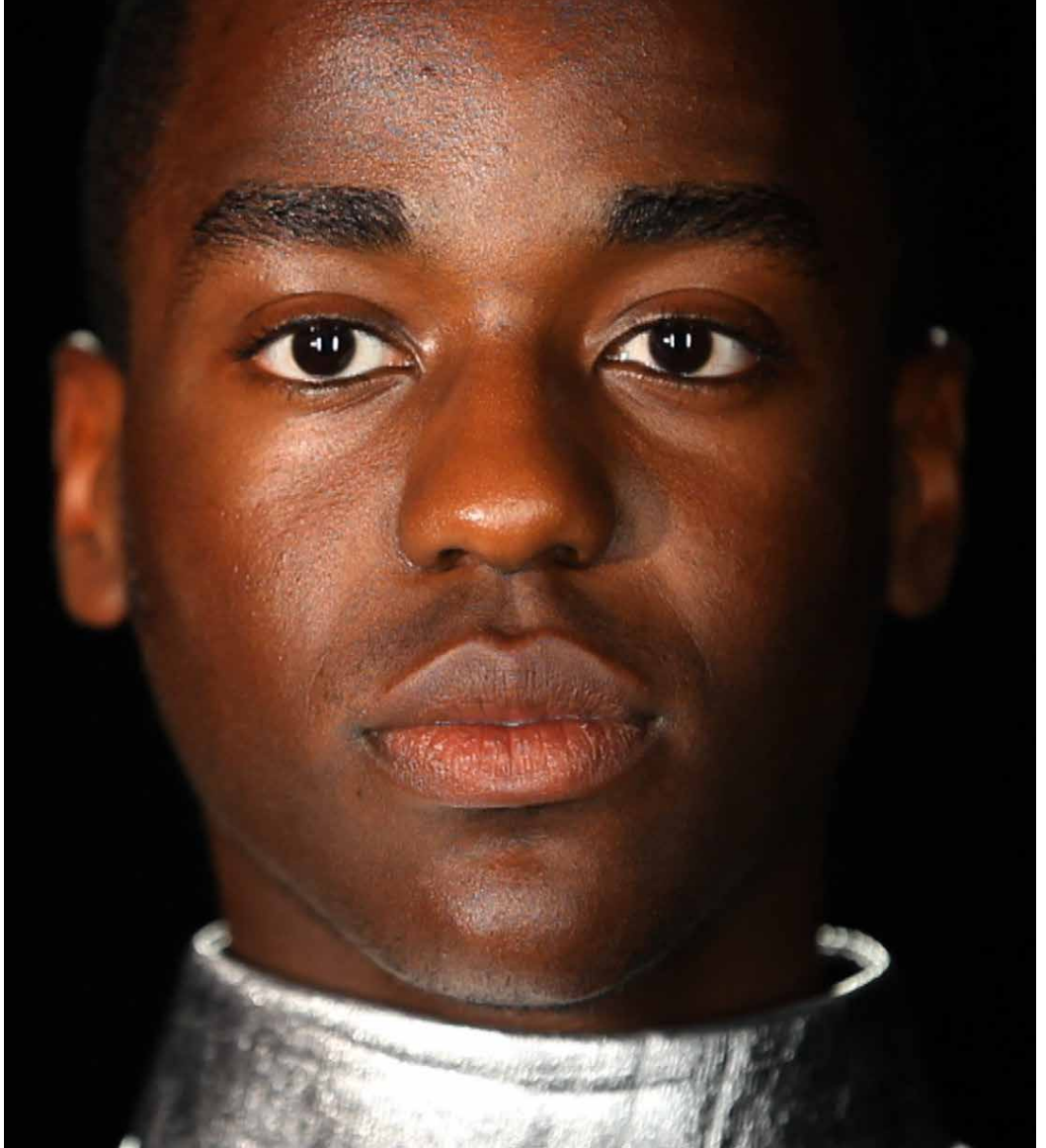


NEW ART EXCHANGE



SEPTEMBER – DECEMBER 2013

Soundbites

let food be the music of love... eat on!



.....
YOU CAN ENJOY MORE NEW ART EXCHANGE TIME THANKS TO...
.....

OUR NEW SOUNDBITES CAFÉ FROM 5PM – 7PM...

Unwind or launch your evening in the intimate setting of New Art Exchange's café. Eat delicious international cuisine and enjoy new music selected by local music enthusiasts from across genres and nations: reggae, soca, jazz, Cuban, calypso, soul, blues, world and more! And stay tuned for our monthly teapot events!...

.....
FAVOURITES FROM THE MEZZE MENU INCLUDE:

Bhulpuri (Bombay/ India)	Salatat al Raheh/ Baba Ganouj (Persian)
Red Red (Volta Region/ Ghana)	Salata Adas (Lebanese)
Mou'sakhan (Palestinian)	Haloumi (NAE Special)

.....
AND OUR NEW OPENING HOURS...

We are now open:
10:30am – 7pm Monday to Friday
9:30am – 6pm Saturdays
Sunday: 11:30am – 5pm

For all the latest NAE news find us on:



Twitter @newartexchange



Facebook



YouTube



Soundcloud

CONTENTS

Exhibitions	4 – 8
Gallery Tours	9
Lectures, Discussions & Presentations	10
Debate, Q&A & Film Screening	11
Access Programme	12
Family Arts Festival	13
Performances	14 – 15
The Exchange On Sunday!	16 – 17
Family Friendly & Activities for Young People	18 – 19
Regular Workshops	20 – 21
Also Happening at NAE	22 – 25
Kids Parties and Spaces for Hire	26
Visitor Information	27
Programme Calendar	28

WELCOME

Welcome once again as we glide past our **5th birthday**. Since opening, each exhibition has hopefully provided you with a festival of intrigue, surprise and choices instigating your thirst for more art fixes.

Our main gallery this season presents a humorous and special fix of treats. *Common Culture*, an eccentric and exuberant trio made up of David Campbell, Mark Durden and Ian Brown, land in Hyson Green like an art safari, sci-fi trip, experimenting through a series of surreal cultural collisions to subvert and topple our comfort zones. In their latest solo show, *Common Culture* use the Nottingham festival scene as a key reference point. Through their new work they prototype ideas of a future festival detached from cultural specificity, exploring instead the emergence of multi-hybridised cultures and identities. Expect an alternative, humorous and intriguing show with some rather dazzling ideas.

The season continues to provide something for everyone be that exhibitions, performances, open mic competitions, films, food, family friendly festivals and workshops, gallery tours, debates, YARD or regular workshops. The feast of choice continues.

Finally don't forget to make sure you support our new opening hours especially our Sunday programme, The Exchange on Sunday, which includes artist led occupations and our bi weekly newspaper, providing you with the alternative Sunday news.

I look forward to seeing you at some stage during the season.

Skinder Hundal
Chief Executive, NAE



EXHIBITIONS



NOT NECESSARILY IN THE RIGHT ORDER COMMON CULTURE

27 SEPTEMBER 2013 – 12 JANUARY 2014

MAIN GALLERY

LAUNCH EVENT: THURSDAY 26 SEPTEMBER 2013,
6PM - 9PM

Common Culture is a collaborative artists' group consisting of David Campbell, Mark Durden and Ian Brown. Reflecting on the numerous festivals that take place in Nottingham, Common Culture have further developed a theme explored in previous work: art's ability to critically and humorously, intervene in and comment on, complex social situations.

Not Necessarily in the Right Order is a video installation that responds to Nottingham's diverse multi-cultural demographic by exploring the social significance of carnival and festival as one of the few public opportunities to celebrate cultural diversity, signify a demand for recognition and re-imagine cultural identity.

EXHIBITIONS



Working with locally based performers and musicians, the video depicts the process of rehearsal for a new carnival of the future. Unlike Nottingham's existing festivals - *Mela*, *Carnival* and *Goose Fair* - the context and identity of this new festival is ambiguous, with no recognizable group identified as the focus of the celebration.

Recognising the centrality of music in the construction and expression of cultural identity in 'carnival', Common Culture have worked with Nottingham-based musicians to engineer a unique musical soundscape. The collaboration with local musicians extends from the video, into the sound track; weaving together and transforming both traditional and emerging 'folk' musical forms in order to celebrate Britain's vibrant multicultural heritage whilst speculating on its potential future.

The flow of movement, and its interruption, is a central theme of the video installation, replicating typical characteristics of carnival procession. Any attempt to smoothly orchestrate the improvised music is also ruptured by an episodic narration, which reflects on both the activity taking place and wider issues relating to the concept of 'carnival', cultural representation and identity.

Founded in Liverpool in 1996 Common Culture have exhibited extensively in the UK and abroad including solo exhibitions in New York, London, Athens, Porto, Manchester and Derry and have participated in numerous group shows including *Shopping* (Tate Liverpool, 2002-3), the Shanghai Biennale in 2006 and Manifesta 8, Spain 2010.

EXHIBITIONS



**Ajmal Khan
chif**

Until 13 October 2013
 Central Gallery

Radford Road Project

Through a series of polaroid photographs, young photographer Ben Kay investigates the multiple ways in which the small businesses of Hyson Green enrich our immediate community. His collection not only explores their role in supporting the locality in an economic sense, but also showcases how the presence of such small businesses help to express the authentic multicultural identity of Hyson Green and maintain its independent and vibrant spirit.



24 October 2013 - 4 January 2014
 Central Gallery

Caribbean Through a Lens

Launch Event: Thursday 24 October,
 5pm - 7pm

Caribbean Through a Lens is a project aimed at engaging local communities with The National Archive's collection of Caribbean images. New Art Exchange has worked with Caribbean Elders and Young People from St Ann's to analyse a series of photographs taken from this collection. The group have selected the images on show within the exhibition, and expressed their thoughts on what the images mean to them. The project aims to explore the notion of the archive and provides an opportunity for those communities depicted in an archive to reclaim a voice in the way their histories are told.

GALLERY TOURS

All tours are FREE, to book on the BSL signed tour contact Glenis@nae.org.uk.



Join artists, the NAE team and other experts for a diverse range of perspectives about the exhibitions. During these informal gallery tours you will learn more about the artists and have the opportunity to exchange your opinions about the show. For those visiting with young people, following the gallery tour there is opportunity to try out some of the fantastic festival masks inspired by the exhibition and to have your photograph taken by photographer Mohammad El Nahas!

Saturday 28 September, 12 noon
 Common Culture Artist collective

Saturday 12 October, 12 noon
 Nahla Magahed, Artist and EVS volunteer

Saturday 26 October, 12 noon
 Sara Abed, Artist and EVS volunteer

Saturday 9 November, 12 noon
 Maria Rosaria Digregorio, Graphic Designer and EVS Volunteer

Saturday 30 November, 12 noon
 Sign language Gallery Tour



LECTURES, DISCUSSIONS & PRESENTATIONS

As places are limited please book in advance to avoid disappointment.



Thursday 26 September, 7pm - 8pm **Common Culture in Conversation**

Signalling the start of our NAE's winter season and the the launch of *Not Necessarily in the Right Order*, main gallery exhibitors Common Culture join Melanie Kidd, NAE Director of Programmes, for a conversation about this new commission. The piece has been inspired by the many festivals that take place in Nottingham and on NAE's neighbouring Forest Recreational Ground and seeks to explore the social significance of carnival and festival as one of the few public opportunities to celebrate cultural diversity, signify a demand for recognition and re-imagine cultural identity.

The session will provide a detailed introduction to the concept of the piece and the dynamic practice of Common Culture. The collective exploit a variety of media to explore cultural identity through its construction in ritualistic commodity consumption. They draw upon a range of influences from popular culture (including British comedy and Northern stand-up comedians) to high art.

Admission: FREE

Age range: All are welcome



Thursday 21 November, 6.30pm - 8pm **Common Culture on Film**

Providing a second opportunity to explore the rich practice of the artist Common Culture, the group members, David Campbell, Mark Durden and Ian Brow, will discuss extracts from a range of films that they have found influential on their work including Lars VonTrier's *Dogville* (2003), Jean-Luc Godard's *Alphaville* (1965), John Coney's *Sun Ra: Space is the Place* (1974), Andy Warhol's *Screen Tests* (1964-66) and Herbert Ross's *Footloose* (1984). The presentation will be interspersed with extracts from the films.

Admission: FREE

Age range: All are welcome

DEBATE, Q&A & FILM SCREENINGS

As places are limited please book in advance to avoid disappointment.



**Thursday 10 October,
6.30pm - 8.30pm**

VOCAL: Black History Month Question Time

Our VOCAL events create opportunity to voice important debates and issues pertinent to our local community. The theme of the event is inspired by this season's programme and Black History Month and will focus on issues that affect African/African Caribbean communities in Nottingham.

Come and ask questions, respond to comments and listen to the perspectives of academics, professionals and community members working within crime, unemployment, education and health. The event will be opened by the newly appointed Lord Mayor of Nottingham, Mertilla Byran. Panel members include: Gary Godden, Leslee Willis, Maxine Davis, Kwame Osei, Amadani Juma and Eddy Maxwell. If you have a question you would like to ask the panel contact: glenis@nae.co.uk by 5 October, 5pm.

Admission: FREE

Age range: All are welcome



**Tuesday 3 December,
6.30pm - 9pm**

Wonderland: Be VOCAL

Wonderland: Creating Disruptive Cultures is the first in a series of open platform debates which will bring together the key agendas for *Wonderland*, a project that will culminate in an exhibition at NAE, summer 2014. You are invited to join the conversation with our panellists and community members to discuss how art and technology has the power to disrupt cultures and bring real change to society.

Further *Wonderland: Be VOCAL* events will take place in 2014, see www.wonderlandproject.net for details.

Admission: FREE (Please be aware that places are limited.)

To book your attendance, please register online at: www.wonderlandnottingham.eventbrite.co.uk

Age range: All are welcome



**Friday 11 October,
7pm - 8.45pm**

Better Mus' Come

Presented in association with Stella Vision

**Dir: Storm Saulter
Duration: 104 min**

NAE welcomes the work of Storm Saulter one year on from the exhibition *I is AnOther*, that celebrated 50th year of Jamaican Independence, in which he featured. Here we present his critically acclaimed and award winning cult film *Better Mus' Come* for its first ever screening in Nottingham.

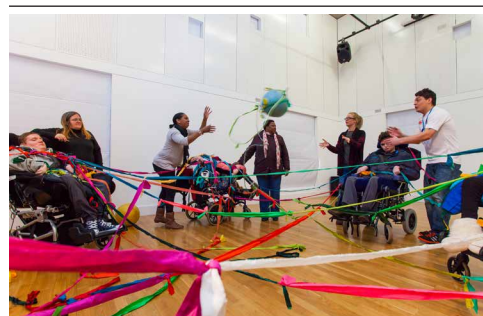
The film follows warring political factions in 1970s Jamaica as they enlist the support of gangs to enforce their policies, and advance their political agenda. It is a fictionalized dramatization of real historical events, specifically, the Green Bay Massacre, where the government finally tracked down these gangs and had systematically wiped out.

**Admission: £4.50
(£3.00 concession)
Age Range: 16+**

ACCESS PROGRAMME

As places are limited please book in advance to avoid disappointment.

New Art Exchange wants to share our passion for the visual arts and our exhibitions and events with as many people as possible. Our growing access programmes is aimed at engaging diverse audiences with different abilities and over the last year we have hosted a number of groups with various needs. The season we are staging the access events listed below, but if you have a proposal as to how we could make our exhibitions more accessible to you or your group, we would love to hear from you.



**Thursday 21 November, 10.30am - 12.30pm
& 1.30pm - 3.30pm**

Body as Canvas

Body and Canvas, is our regular participatory event working with young adults with mental and physical disabilities. This season we will be working with First Movement, a professional arts company that use digital media, music and movement to create exciting, creative workshops.

This season *Body as Canvas* will be introduced by a short 10 minute performance developed by Spiral, a company experienced with learning disabled performers. Wearing boiler suits printed with tyre marks, the Spiral performers will make a journey redefining the spaces they encounter.

Interested groups and schools should contact glenis@nae.org.uk for advance bookings

Admission: FREE

Age range: 16+



Wednesday 30 November, 12 noon
Sign language Gallery Tour

Vistors with hearing impairments are invited to join us for a gallery tour delivered in British Sign Language (BSL). The fully qualified guide will interpret the exhibition and the artworks on show, and participants will also be able to pose questions. The tour is FREE but to avoid disappointment please to book in advance by contacting Glenis@nae.org.uk.

Admission: FREE

Age range: All are welcome



FAMILY ARTS FESTIVAL

26 October 2013, 11am - 5pm

Festival 3013

Family Festival Day

This day of family friendly activities invites you to step away from the everyday and to explore with us your vision of the future! Use our Tardis to be transported to a series of parallel universes. Enjoy our Sci - Fi themed culinary delights in our specially themed café menu all day.

Highlights from the day include:

11am - 1pm

Your Portrait: circa 3013

Come dressed as your favourite Sci- fi character and have your photograph taken in a fantastic futuristic setting. Of course as you would travel to the future in the Tardis, you wouldn't have aged at all!

2pm - 4pm

Dr Who

Series 7 Part 1
Dir: ????

Celebrating the 50th year of BBC production of Dr Who, New Art Exchange presents adventures across time and space with the legendary time-travelling hero.

11am - 3pm

Drop in Workshop

Come and help create a gigantic futuristic beast in our workshop with an explosion of materials and colours of all shapes and sizes! We will make it move, then take our magnificent creature for a walk through the streets of Hyson Green.

Admission: FREE / Age range: All are welcome



**Family Arts
Festival**



PERFORMANCES

As places are limited please book in advance to avoid disappointment.



**Thursday 17 October,
7.30pm - 9pm**

**Cultural Vibrations in
association with NAE
presents**

**Live @ NAE
featuring RAM1
Express Yourself**

Come to celebrate and support exciting new talent from Nottingham. This new Cultural Vibration's initiative aims to platform a diverse line up of local and upcoming talent in the performing arts, spoken word and music. Also featuring on the night is a special performance by Nottingham's very own MOBO nominee RAM1.

If you are a Nottingham based musician, comedian, dancer or actor and interested in showcasing your talent please contact roshni@nae.org.uk. Please note that registrations close on the 1st of October 2013 at 12 noon.

**Admission: £4 (£3 concession)
Age range: 14+**



**Saturday 2 November, 7.30pm - 9.15pm
(including 15 minute interval)**

A South Asian Suite

Arun Ghosh Sextet featuring Zoe Rahman

Clarinetist Arun Ghosh makes his performance debut in Nottingham, featuring the MOBO Award winning pianist, Zoe Rahman.

This show is a celebration of the highly anticipated release of Ghosh's IndoJazz chamber work, A South Asian Suite. This mesmeric and enchanting six movement suite is inspired by the music, landscape and peoples of Nepal, Pakistan, India, Bangladesh and Sri Lanka, as seen from the viewpoint of a British-Asian from a Northern town. Pieces from Ghosh's acclaimed albums 'Northern Namaste' and 'Primal Odyssey', plus euphoric live favourites comprise the second half.

"...an upfront mix of South Asian melodies and western street-grooves, driven by a powerful Indo-western rhythm section" The Guardian

**Admission: £12 (£10 concession)
Age range: All are welcome**



**Saturday 30 November,
6.30pm - 8pm**

**YARD Young People's
Theatre presents**

From Morning to Night

Inspired by our Festivalism season, members of Yard interpret the concepts of ritual and culture. This series of monologues, using movement, music and spoken word, shows the diversity of our worlds, and delves deeper, allowing the participants to explore and develop their skills as well as experience the range of ways we can present theatre today.

**Admission: £4 (£3 concession)
Age range: All are welcome**



Friday 13 December, 8pm - 11pm

Reggae Vs. Bhangra Silent Disco

Check out if Bhangra beats win or if the Reggae Grove take over as DJ Trew and DJ Hardish try to out spin each other in NAE's first Silent Disco! DJ trew will be playing Music from the 70's and 80's tracing the journey of Reggae, Ska, Punk and Rock. DJ Hardish will be spinning out the best of british bhangra!

A silent disco is an event where music is broadcast via a FM transmitter and received through a set of wireless headphones. The listeners have a choice of channels on their wireless headphones to choose from the two of the DJ's playing.

Headphones will be available on the door.

**Admission: FREE
(£5 refundable cash deposit required on the door)
Age Range: 16 +**



THE **EXCHANGE** ON SUNDAY!

EXHIBITIONS / PERFORMANCES / WORKSHOPS / COMMUNITY / FAMILY



COME AND SOAK UP THE VIBES, WITH CHAI TEA, OUR BRUNCH MENU AND TAKE TIME TO READ OUR BI-WEEKLY NEWSPAPER, EXCHANGE ON SUNDAYS!

AND JOIN US FOR PRANYOGA!

EVERY SUNDAY 10 – 11:30AM

PRICE: £2 PER SESSION – PLEASE BOOK ON RECEPTION IN ADVANCE FOR THIS, THE PERFECT WAY TO START A SUNDAY MORNING! PLEASE BRING YOUR OWN MAT.

THIS SEASON WE ARE PROUD TO LAUNCH **THE OCCUPATIONS ON SUNDAY!**

EACH MONTH, WE AIM TO ENTERTAIN AND ENGAGE YOU WITH A RANGE OF DIFFERENT ARTISTS, OFFERING WORKSHOPS AND PERFORMANCES THROUGHOUT THE AFTERNOON SESSIONS.



**SUNDAY 13 OCTOBER,
1PM - 7PM**

BRASILIA!

ABC Dance School team up with Nottingham School of Samba to offer us a day of Brazilian dance and drumming workshops, capoeira demos and performances all over the building! Sample special Brazilian snacks from the bar, and stay for an early evening performance!

1pm - 3pm

NSOS drumming workshop

All ages welcome £5 (£3 concessions)

1pm - 5pm

ABC Dance School samba dance workshop

All ages welcome £6 (£5 concessions)

6pm

Performance

All ages welcome £10 (£8 concessions)

**SUNDAY 24 NOVEMBER,
1PM - 8PM**

PHENOMENAL WOMEN

Join four of Nottingham's Phenomenal Women this Sunday for an afternoon and evening of creative expression through workshops, social interaction and live music. There will also be activities programmed throughout the afternoon for children in our resources area, and as an accompaniment to the workshop.

12.30pm-1.30pm & 2pm - 3pm

Jude Winwood presents BeatFeet Percussion workshop.

All ages welcome £6 (£5 concessions)

3.30pm - 5pm

Malika presents Belly Dance World workshop (with 20 min interval)

Aged 14+ All abilities welcome £6 (£5 concessions)

6pm - 7.30pm

Performance - Lisa Hendricks (with 20 min interval)
Performing live with her band, Lisa is a well-established musician with roots in gospel and soul

Admission: £10 (£8 concessions)

Age Range: All are welcome

**SUNDAY 8 DECEMBER,
1PM - 7PM**

DANCE @ NAE

We have searched the region to find four experimental dance pieces to share with you at this scratch event. Today at New Art Exchange expect the unexpected as we invite performers to move the space, transforming and delighting with their exciting and challenging new work!

See one piece for £3, all four pieces for £10! Book early, this one is not to be missed!

Admission: See one piece for £3 or all four pieces for £10! Book early, this one is not to be missed!

Age Range: All are welcome

FAMILY FRIENDLY & ACTIVITIES FOR YOUNG PEOPLE

This season we present a series of workshops for young people of all ages, and their families, which will all contribute to a final sharing event! We will be celebrating not only the notion of festival, but the results of our work over the months, be it performance, sculpture, art or stories that we have told. In addition to our regular workshops at New Art Exchange, we will be taking our artists out to schools and youth clubs in the locality to share their skills and celebrate the talents of the young people of Nottingham.

Join us for one, a few or all of the workshops, build stories, try new things, help us to create something special! What's more, it's all FREE!

Book early to avoid disappointment!

Saturday 28 September,
11am - 1pm



Katrin Binder - Stories old, Stories new

Using stories from the classical Indian Mahabharata and Ramayana, Katrin takes the art of Southern Indian dance and story-telling to help us create modern tales. We will tell stories with our hands, with our bodies, we will make parts of the spectacular Yakshagana costume, and learn some of the dance moves.

Admission: FREE

Age Range: All are welcome

Saturday 5 October,
11am - 1pm



Nadim Chaudry - Where there's Muck, there's Brass!

Welcoming Nadim back this season, this time we will make costumes out of all manner of recycled materials! Using the inspiration of our ideas of what the word festival means to us, we will create textiles out of anything from bottle tops to egg cartons!

Admission: FREE

Age Range: All are welcome

Saturday 2 November,
11am - 1pm



Shan Bansil - ShankoJamming

What would a festival be without music? Join Birmingham-based artist, actor and musician Shan Bansil as he shares his Beatbox, Rhyme and Rap to make some festival-style vibes! Snatch this rare opportunity to record a track as guided by the pros!

Admission: FREE

Age Range: 11 - 16 years

Saturday 9 November,
2am - 4pm



Jay Pollitt - Dream your World!

Following on from his hugely successful Move your World workshop last season, Jay will be helping us to create new worlds through movement. Taking our inspiration from the exhibition in the main gallery, and previous workshops, we will celebrate ourselves and each other as we make our perfect festival day!

Admission: FREE

Age Range: All are welcome



Saturday 14 December, 2pm - 4pm Performance - Festivalites!

This is an opportunity for all those that have contributed to our Festivalism season workshops to see and perform their work for each other and the public. We open the space to display and show off the wonderful work that our participants have created over months. The piece will fuse our ideas about festival and celebration. Come, see your work, share it with others and of course have a light bite to eat and drink.

Admission: FREE

Age Range: All are welcome

REGULAR WORKSHOPS

YARD

YARD (Youth Arts Research and Development) is a creative hub for young people (up to 25 years old) to develop skills as performers and creative producers. In addition to our creative Family Friendly sessions held on a Saturday and the artistic workshops for young people held over the school holidays, we also run the **YARD Theatre** for young people, and the **Young People's Panel**.



Every Wednesday from 4 September, 5pm - 7pm

Yard Young People's Theatre

Come and join our growing company of young actors. Led by experienced performer and theatre maker, Sooree Pillay, the sessions aim to build confidence and corporal expression, as well as more specific theatre skills such as script-writing, voice work and characterisation.

This season we will be exploring themes inspired by the main gallery exhibition entitled "Festivalism" The work will culminate in a performance on 30 November.

For further details, and if you would like to join YARD Theatre, just contact sooree@nae.org.uk, or call in for a chat!

Admission: FREE

Age range: 11 - 25 years



Alternate Wednesdays from 11 September, 5pm - 7pm

Young People's Panel

Made up of 15 - 25 year olds who are passionate about visual and performing arts, these sessions provide participants with insight and experience of working within a creative organisation. The panel meets twice a month to develop their own creative projects which influence the Youth Programme at NAE and enable the participants to develop their skills as creative producers.

If you are interested please contact roshni@nae.org.uk

Admission: FREE

Age range: 14 - 25 years



Every Saturday

11am - 12:30pm, Adults class (admission £5)

1pm - 1:30pm, 3 - 5 year olds (admission £2.50)

1.30pm - 2.30pm, 6 -12 year olds (admission £3.50)

Brought to you in association with Capoeira Angola Nottingham

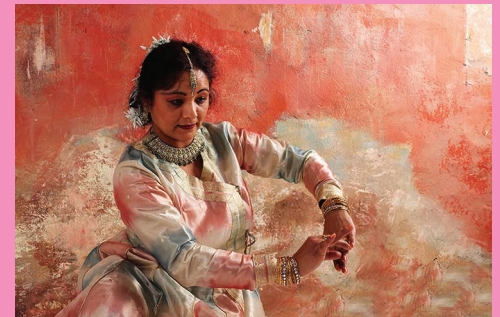
Capoeira classes for adults and children

Discover the upside down and inside out world of capoeira! A reaction based movement game with roots in African Brazilian music, dance and performance culture, capoeira involves interactive movement, game play, acrobatics, song and percussion.

These classes for adults and children are taught by Contra Mestre Alex Guyer and brought to you in association with Capoeira Angola Nottingham www.capoeiranottingham.org

Admission: FREE

Age range: 11 - 25 years



Every Saturday 5 October - 21 December (Holidays: 26 October, 2, 16, 30 November)

10am - 11am Beginners and Children (6 years +)

11am - 12.30pm Advanced

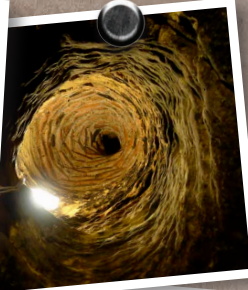
Kathak Dance

Kathak is one of the eight classical dances from India that has a strong emphasis on rhythm, footwork, expression and grace. Join Vina Ladwa a trained Kathak dance artist, choreographer and tutor for this 15 week course. During the course you will develop both basic and advanced skills of the dance, and also explore the language of movement representing an identity rooted in two cultures.

**Admission: £40 (£32 Concession) for the 8 week course
£6 (£5 Concession) for each session if you pay for each session separately**

We advise you to ring NAE ahead of each of the regular classes to confirm the times.

ALSO HAPPENING AT NEW ART EXCHANGE



NAE's ExperiMentor Programme

ExperiMentor is a creative and professional initiative that supports artistic practitioners and provides a public platform for their experimentation. See our website to read about the project each of the artist will be working on.

Ben Harriott uses photography as a tool to explore the relationship between the physical, emotional and the subconscious. He believes that photographs can signify complex emotions and translate inner visions into tangible realities. Ben uses self-taught traditional and innovative lighting methods to unearth the energy and emotions of that which he photographs. His most recent and on-going body of work explores the chasm of family identity spanning three cultures: British, Jamaican and Russian. www.benharriott.com

Feng-Ru Lee is a Taiwanese artist based in Nottingham and Taipei. Lee's practice is rooted in her Far-East Asian Cultural background. She has a keen interest in the juxtaposition of eastern and western cultures and systems, often addressing issues of science and mythology. Specifically focusing on human conditions under genetic engineering, Lee works across a range of different medias often incorporating methods of audience participation and performance. Lee has exhibited throughout the UK, Europe, Taiwan, USA, Middle East and Japan, and in 2000 received the prestigious Taipei Prize. www.fengrulee.co.uk

Shan Bansil. Music. Theatre. Spoken Word. Song. Beatbox. Movement. These are the forms through which Shan has been expressing his art over the last two years. Since 2011 he has been involved in three major touring productions both as a deviser and performer. These are 'KATHAKBOX' with Sonia Sabri Company, 'MANDALA' with Sampad South Asian Arts, and 'EAT!' with Black Country Touring and Birmingham REP. Through the ExperiMentor programme Shan will explore storytelling, theatre, live instrumentation, movement and song, to create a brand new stage or site specific performance.

Sidelong is an art collaboration between Jo Dacombe and Laura-Jade Klée that explores the identity of Nottingham's landscape through artistic interventions. On selected Saturdays in September and October, Sidelong present a unique 'art walk' exploring hidden chambers below Nottingham. It invites participants to reimagine the caves through curious art objects, fabricated histories and storytelling. Please visit the website www.sidelonguk.blogspot.co.uk for admission fee and other details. You can book a place on these tours at New Art Exchange

EVS

This season NAE continues its successful relationship with the European Voluntary Service (EVS) and welcome four talented, vibrant volunteers who will be with NAE for 12 months.

Saria Digregorio (Italy)

Saria is a talented book designer and typographer. Before NAE she was collaborating with Italian magazines and publishing houses, and working with Zabar, a design collective focused on analogue and digital crafts, self-publishing, reuse of materials and collaboration.

Mohamed el Nahhas (Egypt)

Mohamed is a graduate from the faculty of tourism and hotels, Alexandria University and a talented photographer. He was an official photographer for AGORA Arts & Culture and is also a wonderful cook who would love to one day combine his loves of food and photography.

Nahla Ahmed (Egypt)

Nahala is a talented visual artist and jewellery designer who has experience in event co-ordinating as well as organising and promoting workshops and activities for travel groups. She has a strong interest in cultural tourism and would love to bring the skills she learns at NAE back to the Zwada Camp, Egypt.

Sara Abed (Egypt)

Sara is a talented artist who has experience in curation. She curated the Mahatat communal mosaic workshop held during Farah El Bahr intercultural festival and has presented creative educational art classes.



The Jack Vickers Award Call for Submissions:

The Jack Vickers Award is a bursary to support, nurture and recognise the career and interest of young writers (18-26) interested in the visual arts. Deadline for the second award is Friday 21 September 2013 at 5pm.

For further information about eligibility and deadlines see details on our website: www.nae.org.uk



Learning at NAE

Our learning programme is growing from strength to strength and this season is no exemption, with the introduction of our regular teacher's event that informs and inspires schools and colleges to come and work with us for free.

Tuesday 17 September, 4pm - 6pm

Teacher's Welcome Event

We offer gallery tours, interactive learning activities and self-led sessions. To find out more about our learning offer and our future exhibition programme come along to our teacher's welcome event. Enjoy delicious complimentary finger foods a glass of wine at the same time!



Our Learning Focus this season

Black History Month is a vital time for schools nationally to engage in a series of cultural activities celebrating the contribution made by African, African Caribbean communities worldwide. Book a school visit and explore Caribbean Through a Lens, a pictorial intergenerational exhibition showcasing images selected from the Photographic Colonial Records Office. Come and use our new learning pack, that has been developed in partnership with the National Archive. The photographs provide activities encouraging analytical thinking, communication and observational skills as well as exploring similarities and differences. This learning pack offers practical ideas to support children as researchers and will develop their skills as historical enquirers.

Take your pencil for a walk this October and join in our **Big Draw** self-led activity by contributing pages to our schools sketch books. Let your imagination take control and be inspired by our exhibition, *Not Necessarily in the Right Order* by the artists Common Culture. Inspired by Nottingham's festivals (Goose Fair, Mela, Caribbean Carnival), and responding to the notion that a festival is a place where we celebrate and express our cultural identity; with a pinch of Sci-Fi and a sprinkling of humour Common Culture have imagined a *Festival of the Future* in their exhibition. What it looks like? What will it sounds like? Can you capture the festival of the future in a drawing? This activity is for those who love to draw, and those who think they can't. Come draw with us at NAE and make your mark this October!

For details contact:

Glenis Williams, Learning & Community Engagement Co-ordinator
0115 924 8630, glenis@nae.org.uk



Community at NAE

Caribbean Through a Lens (see p ? and ?) is an example of how community engagement is working at NAE. This community project has been a great opportunity to learn and share comments about cultures, working in partnership with the Renewal Trust, Chase Community Neighbourhood Centre and members from the St Anns Luncheon Club. Individuals have selected photographs from thousands of images and produced their own interpretation sharing personal insights of traditions, customs and of memories of back home.

Community engagement is important to us, and we welcome opportunities to broaden our reach and deliver relevant long term partnerships. If you belong to a community group or would like to get involved with NAE, please get in touch and we will be happy to discuss possibilities of working together.

For details contacts:

Glenis Williams, Learning & Community Engagement Co-ordinator
0115 924 8630, glenis@nae.org.uk



Who's in the Kitchen

Who's in the Kitchen is NAE's ever-changing portfolio of guest chefs from our local community who introduce delicious new dishes to our already tantalising café menu! This season Ethel Anderson, manager of the Elders Luncheon Club, has chosen Ackee and Salt fish, as her signature dish to coincide with Black History Month celebrations.

Ackee is the national fruit of Jamaica as well as a component of the national dish, Ackee and Codfish. Although the Ackee is not indigenous to Jamaica, it has remarkable historic associations. Originally, it was imported to the island from West Africa before 1778, on a slave ship. Ackee is derived from the original name Ankye which comes from the Twi language of Ghana. The botanical name of the fruit *Blighia Sapida* was given in honour of Captain William Bligh of "Mutiny on the Bounty" fame, who in 1793 took plants of the fruit from Jamaica to England.

KID'S PARTY



NAE is also the perfect place to host your next kid's party. With 5 packages on offer and fun party food provided, there's something to suit every taste!

Popcorn Party Your child can watch their favourite film on the big screen surrounded by friends. Choose from one of our top ten or bring your own; we'll provide the popcorn!

Arty Party Does your child like making things? Unleash your creative talent with an Arty Party! Something for everyone to make and take home.

Dance Party Is your child always full of energy.....can't keep still? This is the party for you! They can move and dance as much as they like, with the latest dance styles and music.

Disco Ball Party Young and old, everyone loves a disco. Bring your own playlist and we will get the mirror ball spinning!

Karaoke Party Exercise your vocals with a karaoke party. Choose, learn and sing your favourite songs with your child and their friends!

For more information to place a booking call: 01159248630 or contact us on: bookings@nae.org.uk

SPACES FOR HIRE



Inspire creative thinking during your next conference and away day, or give your next function an edge by hosting it in one of the nation's leading contemporary arts spaces. Just minutes by tram from the city centre, our performance space – previously hosting Mercury Award nominated and MOBO winning artists – provides an inspiring environment, and our other spaces offer the perfect setting for more practical sessions.

For more information or to tour our facilities please contact the booking team on bookings@nae.org.uk or 0115 924 8630

PROGRAMME COLLABORATORS



VISTOR INFORMATION

Getting here

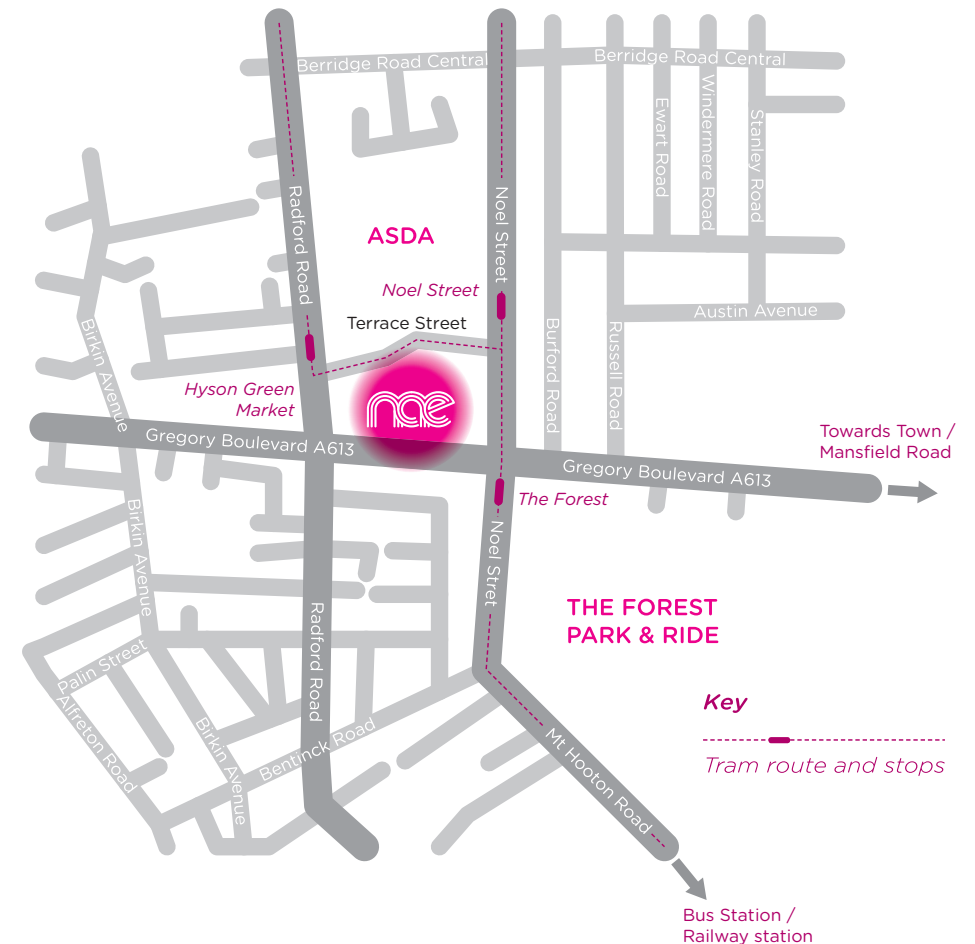
NAE is easily accessible by car, cycle routes and public transport including tram (The Forest stop) and Bus services (78,79,80,81 & L12). For more detailed information on how to get to NAE please visit our website www.nae.org.uk, email info@nae.org.uk or call us on 0115 924 8630.

How to find us

Accessibility

The building and facilities are fully accessible on most levels. We have parking spaces available for people with disabilities at the rear of the building, just off Noel Street. For access to the spaces simply call us on 0115 924 8630 to arrange.

This brochure is available in large text, audio and other formats. If you would like it in a different format, please get in touch with us on info@nae.org.uk.



PROGRAMME

Date	Event / Activity	Time	Description
Until 13 October	Hyson Green Project	N/A	Exhibition
Saturday 28 September	Gallery Tour with Common Culture Artist Collective	12pm	Gallery Tour
Thursday 26 September	Not Necessarily in the Right Order Common Culture	6pm - 9pm	Launch Event/ Exhibition
Thursday 26 September	Common Culture in Conversation	7pm - 8pm	Lectures, Discussions & Presentations
Saturday 28 September	Katrin Binder - Stories Old, Stories New	11am - 1pm	Family Friendly & Activities for Young People
Saturday 28 September	Gallery Tour with Common Culture Artist Collective	12pm	Gallery Tour
Saturday 5 October	Nadim Chaudry - Where There's Much There's Brass!	11am - 1pm	Family Friendly & Activities for Young People
Thursday 10 October	VOCAL: Black History Month Question Time	6.30pm - 8.30pm	Debate, Q&A and Film Screenings
Saturday 12 October	Gallery Tour with Nahla Magahed, EVS Volunteer	12pm	Gallery Tour
Sunday 13 October	Brasilia!	1pm - 7pm	The Exchange on Sunday
Thursday 17 October	Live @ NAE featuring RAM!	7.30pm - 9pm	Performances
Thursday 24 October	Caribbean Through a Lens	5pm - 7pm	Launch Event/ Exhibition
Saturday 26 October	Gallery Tour with Sara Abed, EVS Volunteer	12pm	Gallery Tour
Saturday 26 October	Your Portrait: Circa 2013	11am - 1pm	Family Festival Day
Saturday 26 October	Dr Who	2pm - 4pm	Family Festival Day
Saturday 26 October	Drop in Workshop	11am - 3pm	Family Festival Day
Saturday 2 November	Shan Bansil - Shankojamming A South Asian Suite	11am - 1pm	Family Friendly & Activities for Young People
Saturday 2 November	Arun Ghosh Sextet featuring Zoe Rahman	7.30pm - 9.15pm	Performances
Thursday 7 November	Better Mus' Come	7pm - 8.45pm	Debate, Q&A and Film Screenings
Saturday 9 November	Maria Rosaria Digregorio, EVS Volunteer	12pm	Gallery Tour
Saturday 9 November	Jay Polliitt - Dream Your World!	2am - 4pm	Family Friendly & Activities for Young People
Thursday 21 November	Body as Canvas	10.30am - 12.30pm	Access Programme
Thursday 21 November	Common Culture on Film	6.30pm - 8pm	Lectures, Discussions & Presentations
Sunday 24 November	Phenomenal Women	1pm - 8pm	The Exchange on Sunday
Saturday 30 November	Gallery Tour, BSL Tour	12pm	Gallery Tour, BSL
Saturday 30 November	YARD: From Morning to Night	6.30pm - 8pm	Performances
Tuesday 3 December	Wonderland: Be VOCAL	6.30pm - 9pm	Debate, Q&A and Film Screenings
Sunday 8 December	Dance @ NAE	1pm - 7pm	The Exchange on Sunday
Friday 13 December	Reggae Vs. Bhangra Silent Disco	8pm - 11pm	Performances
Saturday 14 December	Performance - Festivalites!	2pm - 4pm	Family Friendly & Activities for Young People

Regular Workshops

Wednesdays from 4 September	YARD Youth Theatre	5pm - 7pm	Regular Workshop
Alternate Wednesdays from 11 September	Young People's Panel	5pm - 7pm	Regular Workshop
Saturdays	Capoeira Class (Adults)	11am - 12.30pm	Regular Workshop
Saturdays	Capoeira Class (3 - 5 years)	1pm - 1.30pm	Regular Workshop
Saturdays	Capoeira Class (6 - 12 years)	1.45pm - 2.45pm	Regular Workshop
Saturdays 5 October - 21 December	Kathak Dance (Beginners and Children)	10am - 11am	Regular Workshop
Saturdays 5 October - 21 December	Kathak Dance (Advanced)	11am - 12.30pm	Regular Workshop

Acknowledgments

We would like to acknowledge the financial support NAE has received from our Funders and Partners.

Revenue Funding



Supported using public funding by
**ARTS COUNCIL
ENGLAND**



Capital Funders



39-41 Gregory Boulevard Nottingham NG7 6BE

T: 0115 924 8630

E: info@nae.org.uk

W: www.nae.org.uk

Gallery Opening Times

Monday to Saturday 9am - 5pm

Closed Sundays but open for Exchange on Sunday!

From 2 June - 28 July 11am - 5pm

Please note we are closed on Bank Holidays

Registered Charity No. 1121755, Company No. 04899786

Registered in England & Wales