

MICHAEL DAY

EPICENTRES

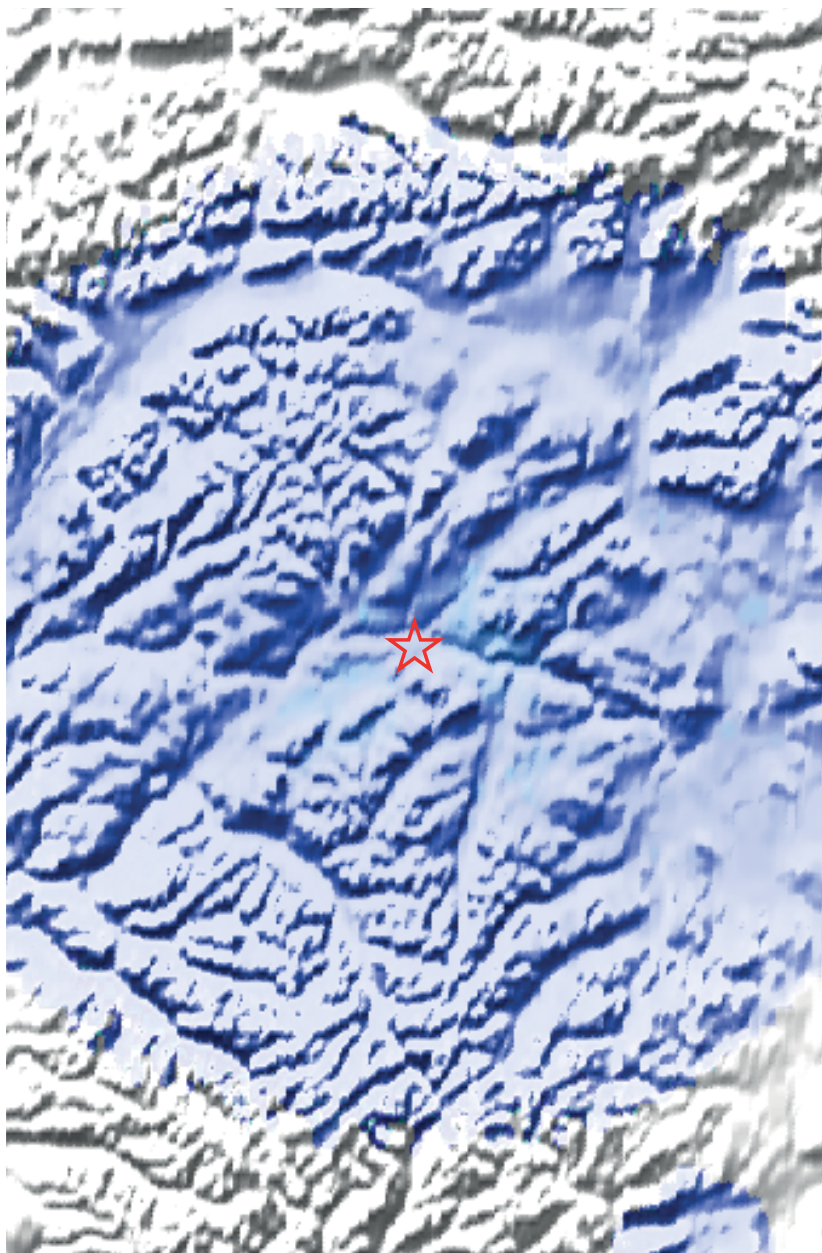


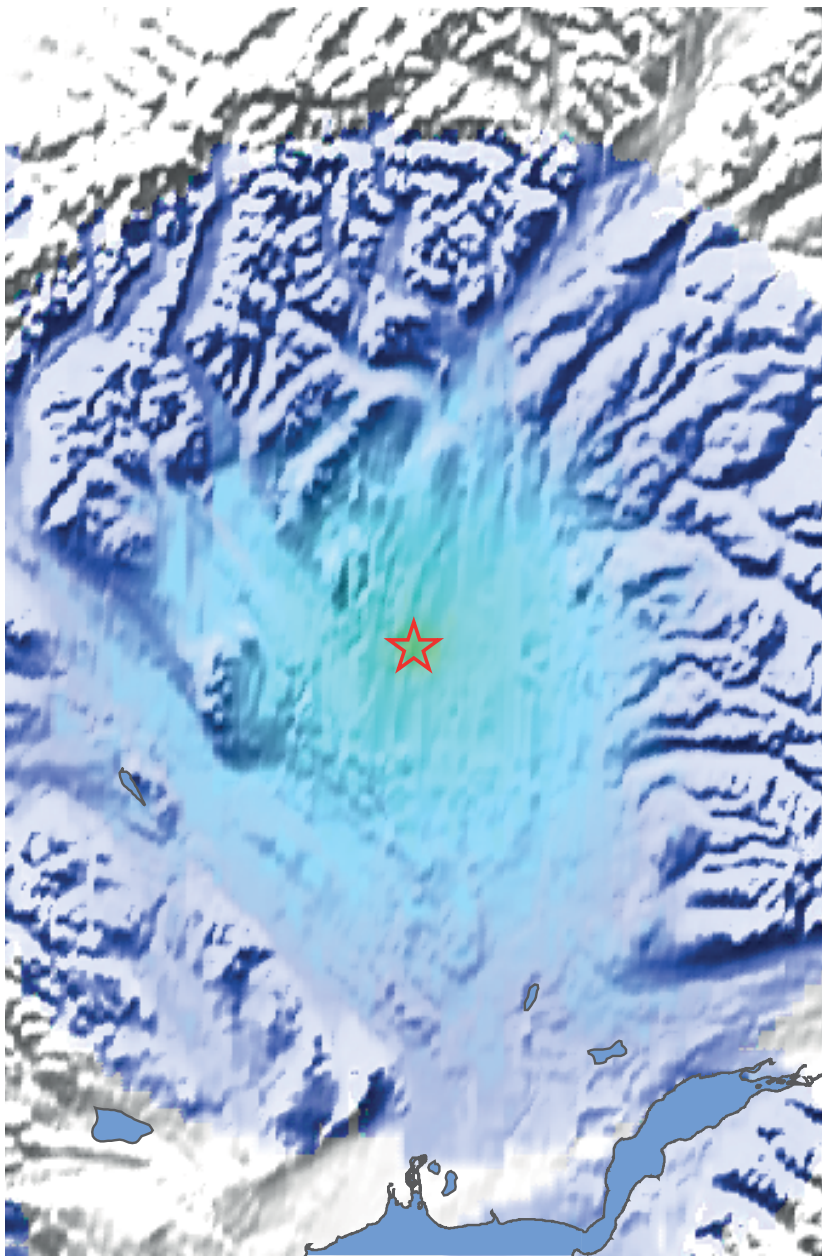
THE EDITIONS

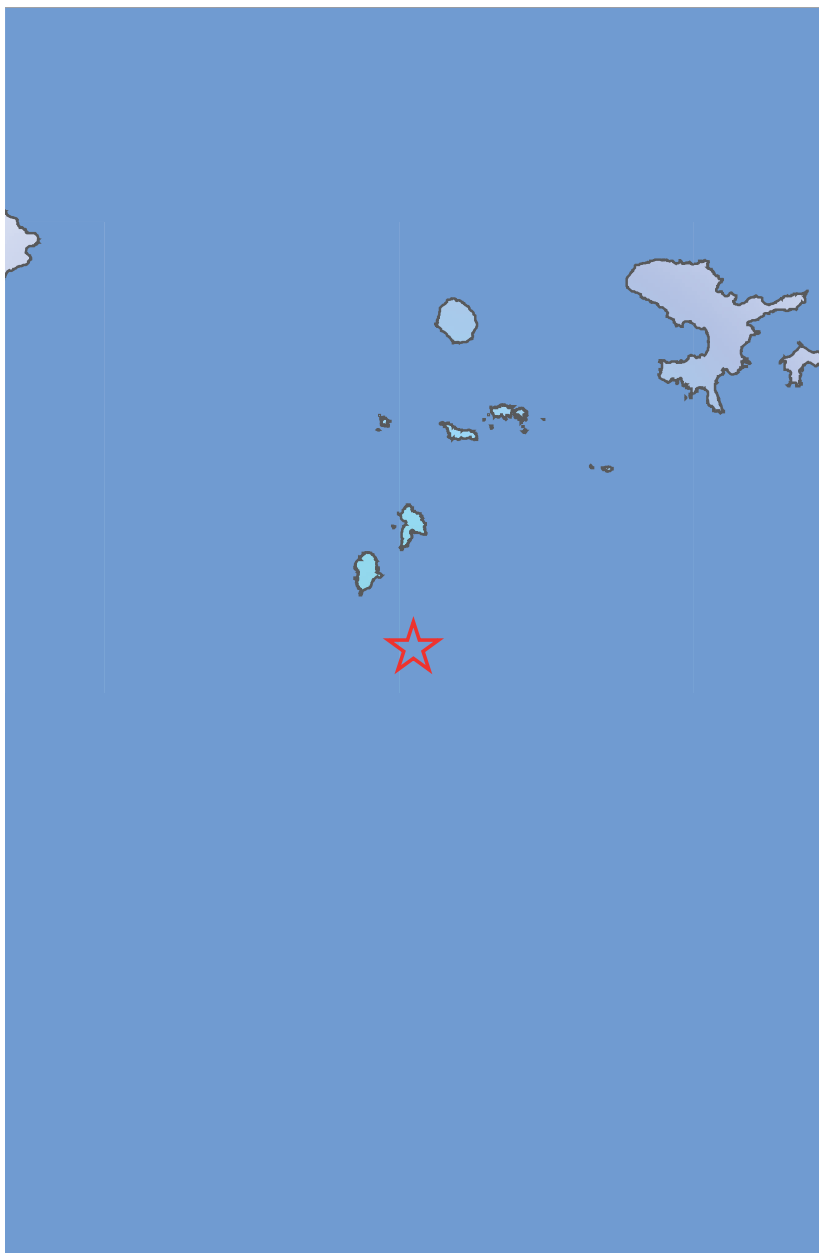
Published in an edition of 25
on the occasion of PAGES Leeds
International Contemporary Artists Book Fair
The Tetley, Leeds, UK, 6 to 8 March 2015

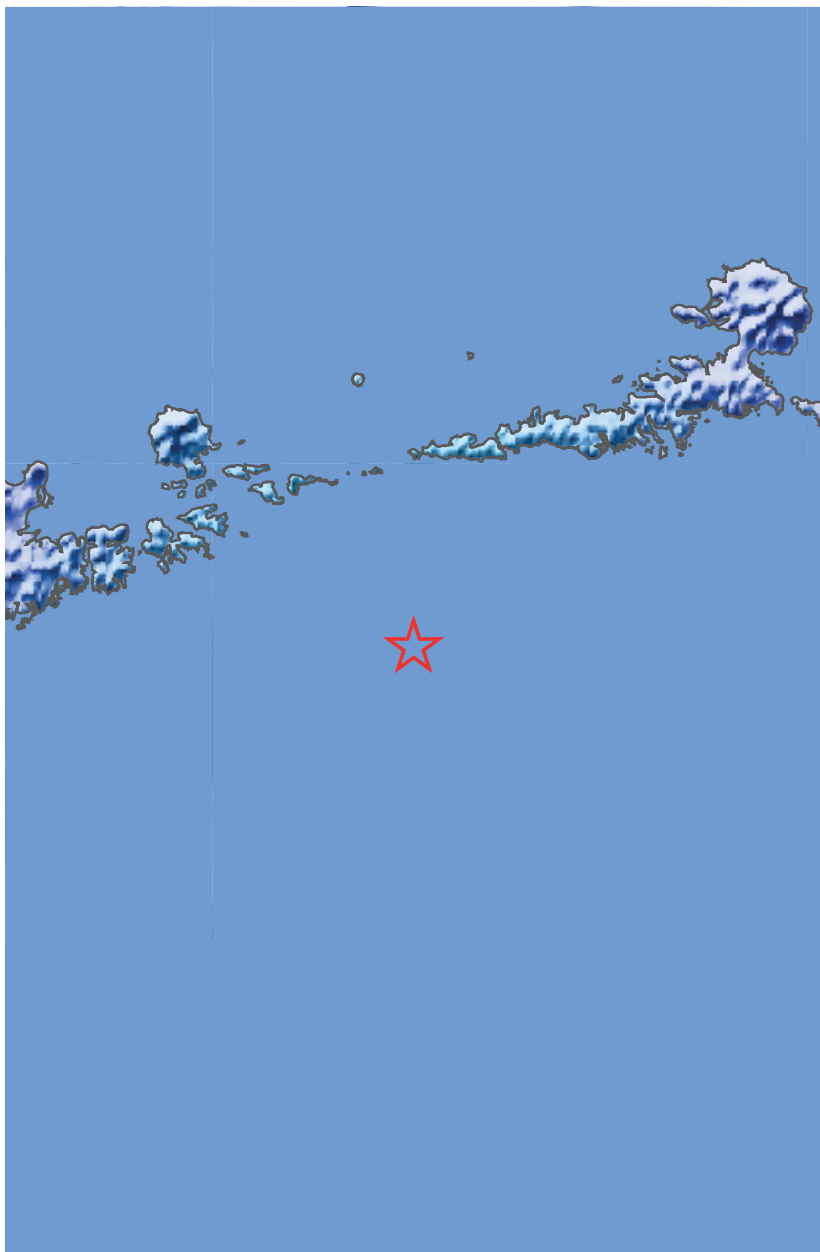
1. 61.5 miles SW of Dutch Harbor, AK, Jan 28 2015 11:34:51, 11495834
2. 44.7 miles SSE of Cantwell, AK, Jan 23 2015 20:15:31, 11492231
3. 17.7 miles WSW of Talkeetna, AK, Jan 19 2015 10:36:11, 11488818
4. 112.5 miles WSW of Adak, AK, Jan 18 2015 17:54:55, 11488339
5. 59.6 miles ESE of Adak, AK, Jan 17 2015 09:36:47, 11487545
6. 79.7 miles NNW of Bettles, AK, Jan 11 2015 19:27:03, 11484427
7. 50.2 miles N of Kotzebue, AK, Jan 06 2015 02:39:12, 11480129
8. 116.1 miles WSW of Kodiak, AK, Jan 05 2015 09:23:21, 11479466
9. 66.9 miles WSW of Adak, AK, Jan 03 2015 08:41:51, 11478060
10. 83.9 miles WSW of Adak, AK, Jan 01 2015 13:50:21, 11477364
11. 112.5 miles SSW of Kodiak, AK, Jan 01 2015 11:17:39, 11477263
12. 27.0 miles SSE of Akutan, AK, Jan 01 2015 00:45:11, 11477121
13. Southern Alaska, Dec 30 2014 18:00:35, 11475862
14. Kenai Peninsula, Alaska, Dec 28 2014 17:00:31, 11474602
15. 226.3 miles E of Adak, AK, Dec 28 2014 09:08:01, 11474497
16. 61.5 miles ESE of Adak, AK, Dec 23 2014 00:02:59, 11471639
17. 87.4 miles ENE of Sand Point, AK, Dec 19 2014 09:05:24, 11468838
18. Southern Alaska, Dec 18 2014 12:10:58, 11467925
19. Southern Alaska, Dec 13 2014 22:30:08, 11465490
20. Southern Alaska, Dec 05 2014 11:30:13, 11456687
21. 17.7 miles SW of Valdez, AK, Dec 01 2014 00:10:16, 11453391
22. 64.6 miles SSE of Cantwell, AK, Nov 29 2014 21:06:48, 11452110
23. 30.5 miles NNW of Talkeetna, AK, Nov 29 2014 04:14:16, 11451216
24. 166.8 miles WSW of Kodiak, AK, Nov 26 2014 10:05:18, 11449964



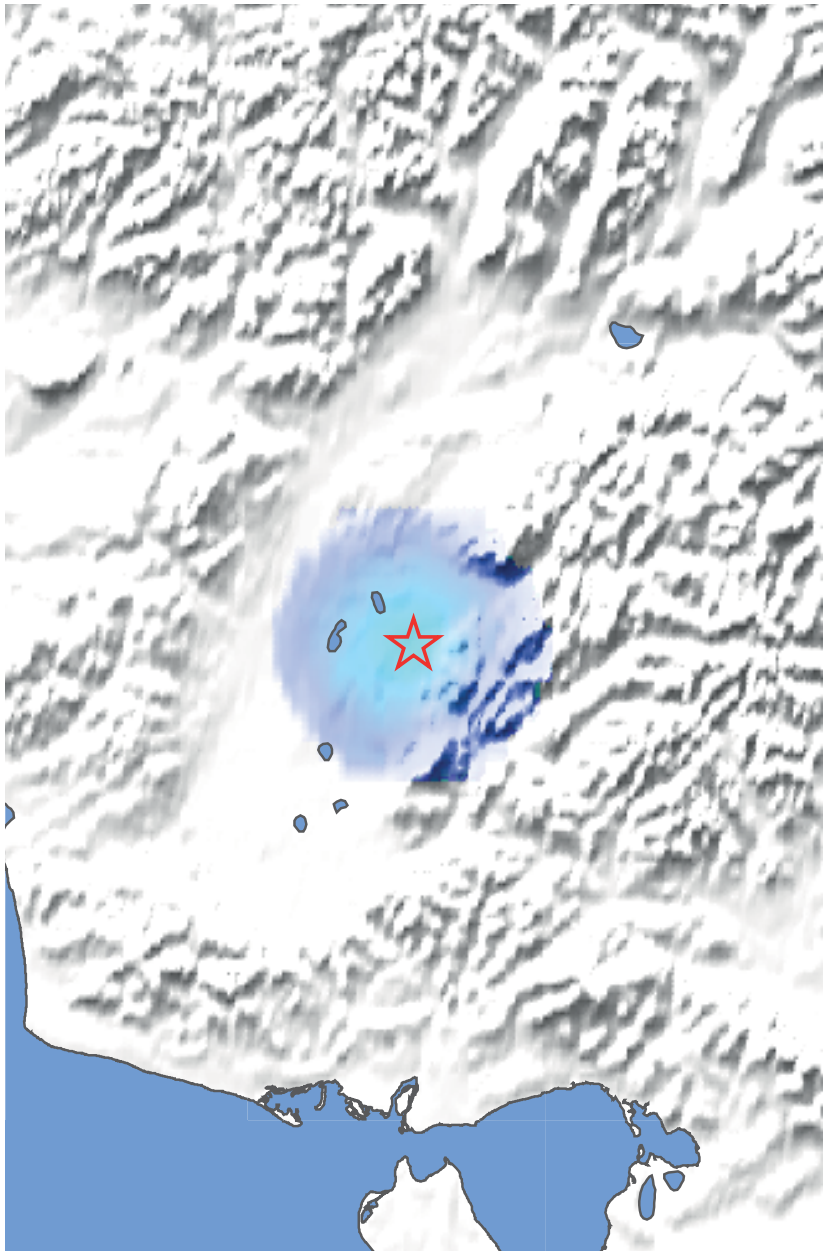


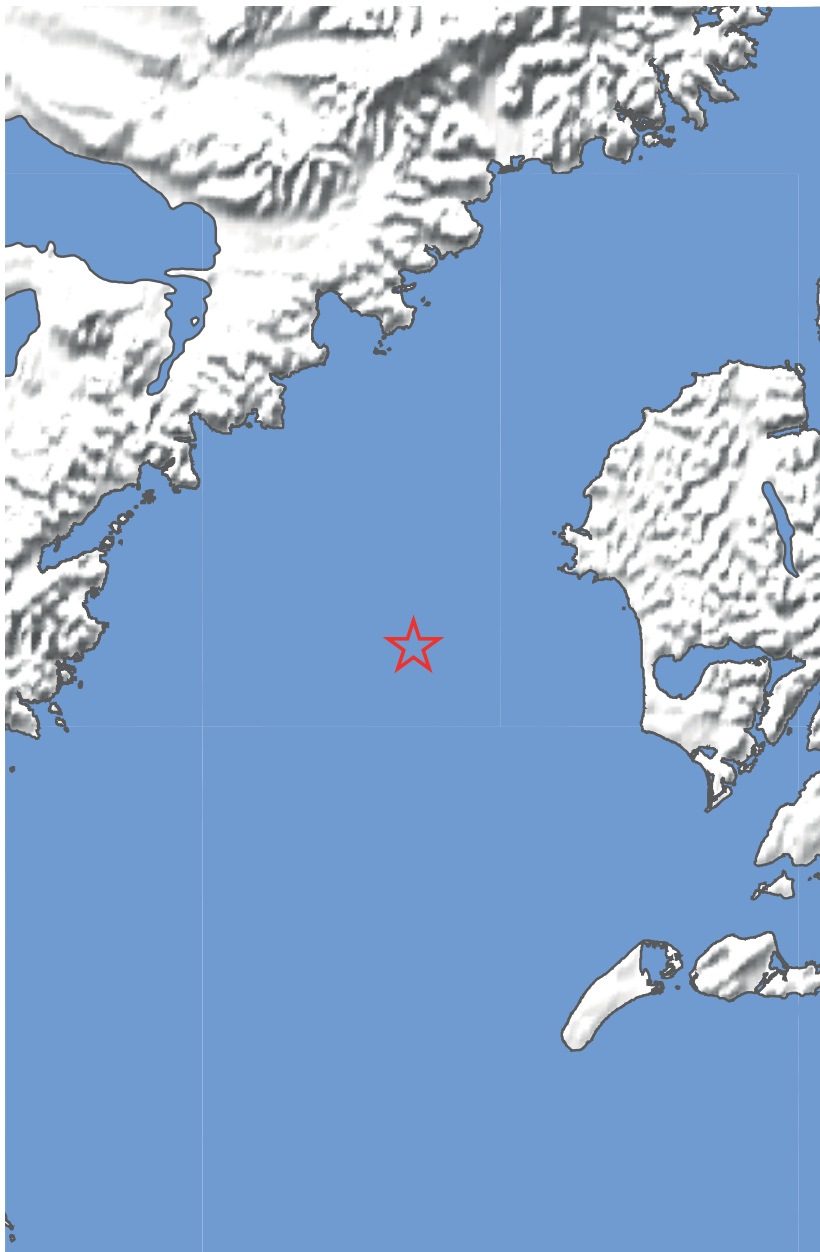


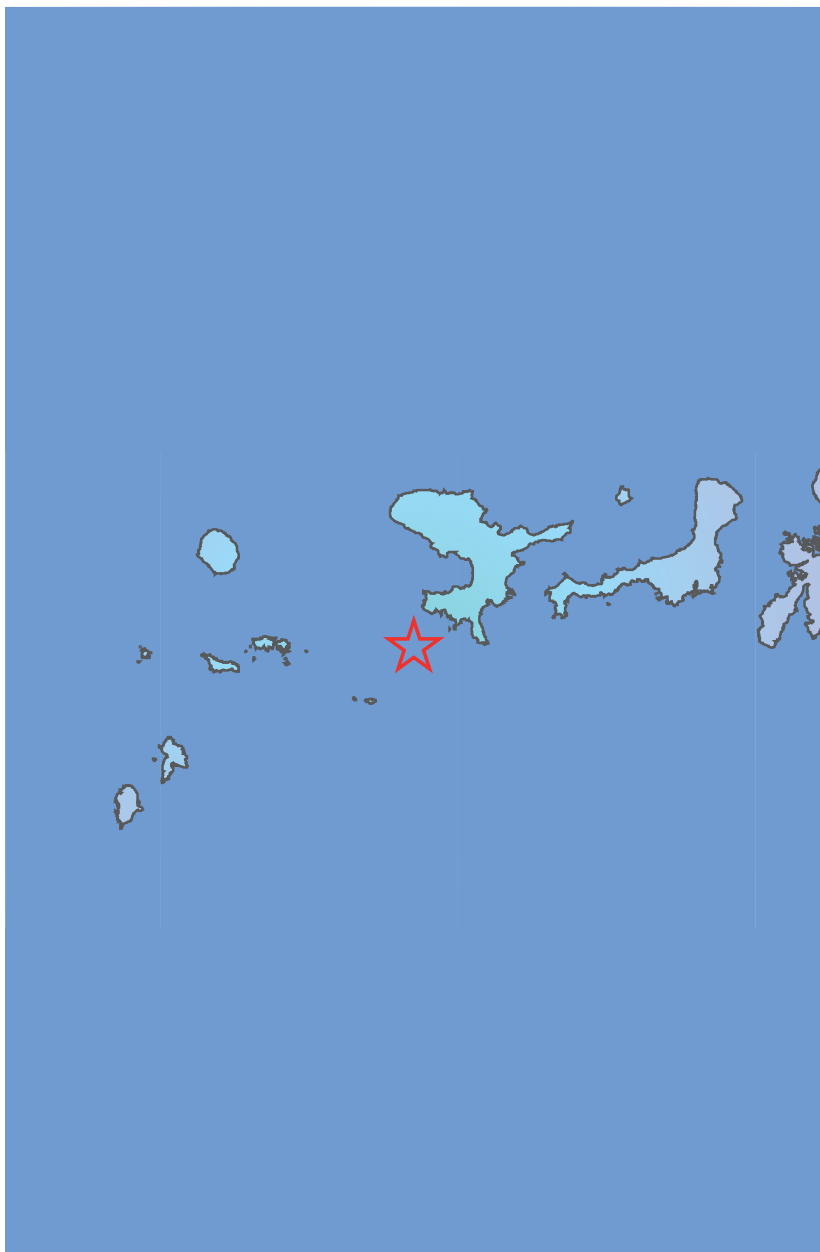


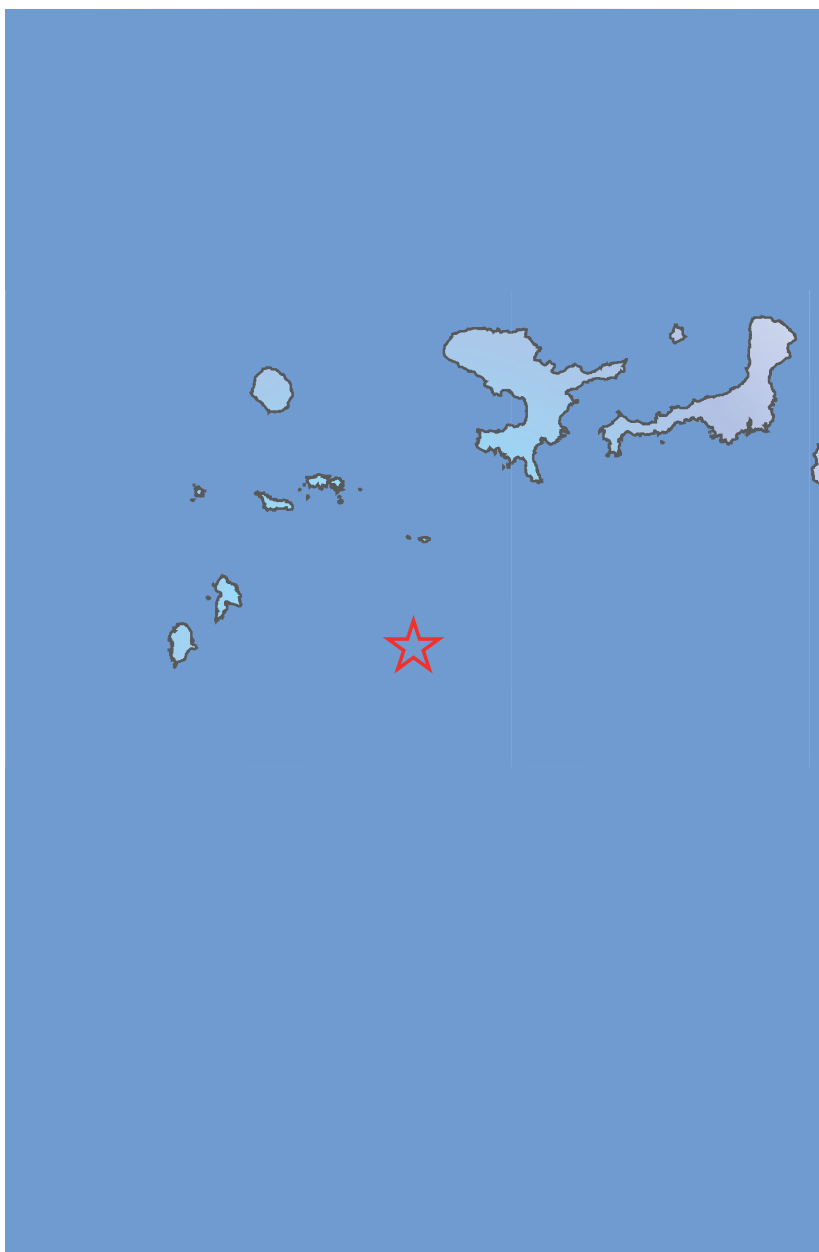


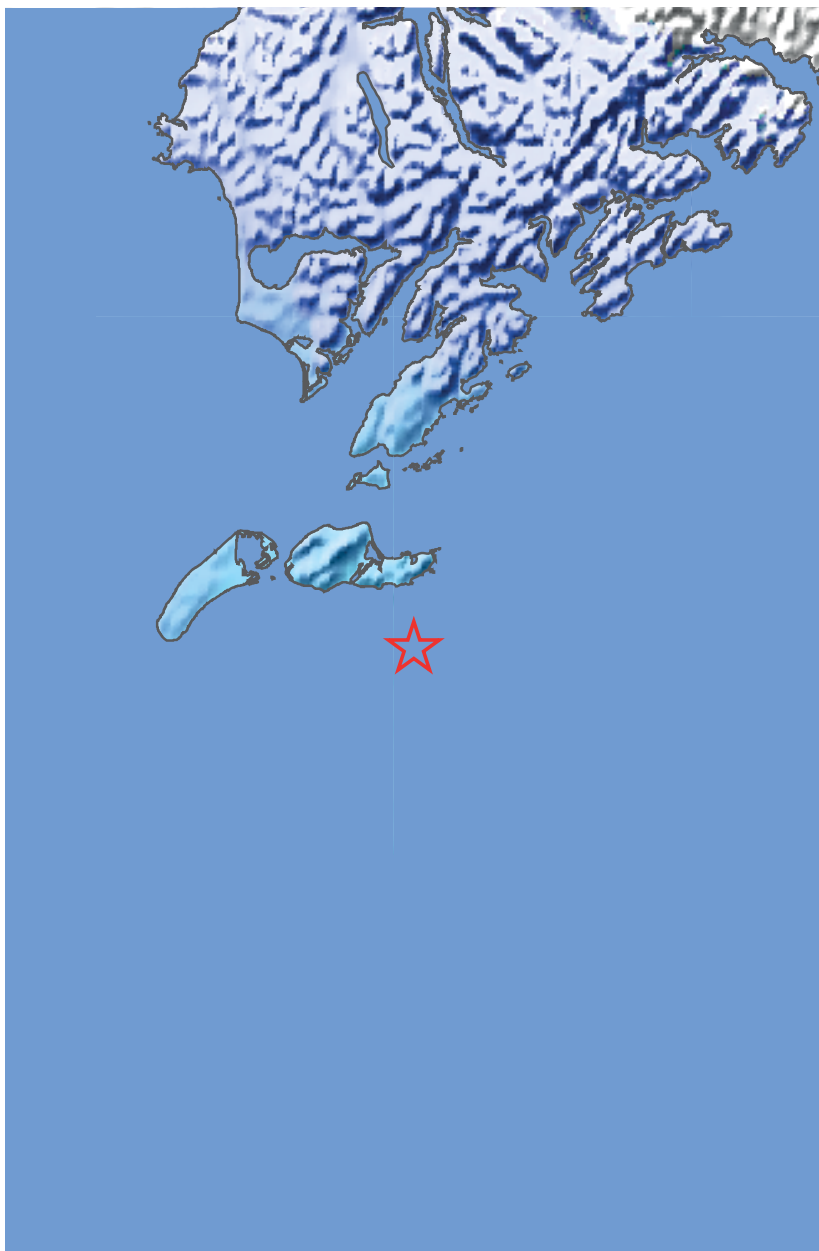




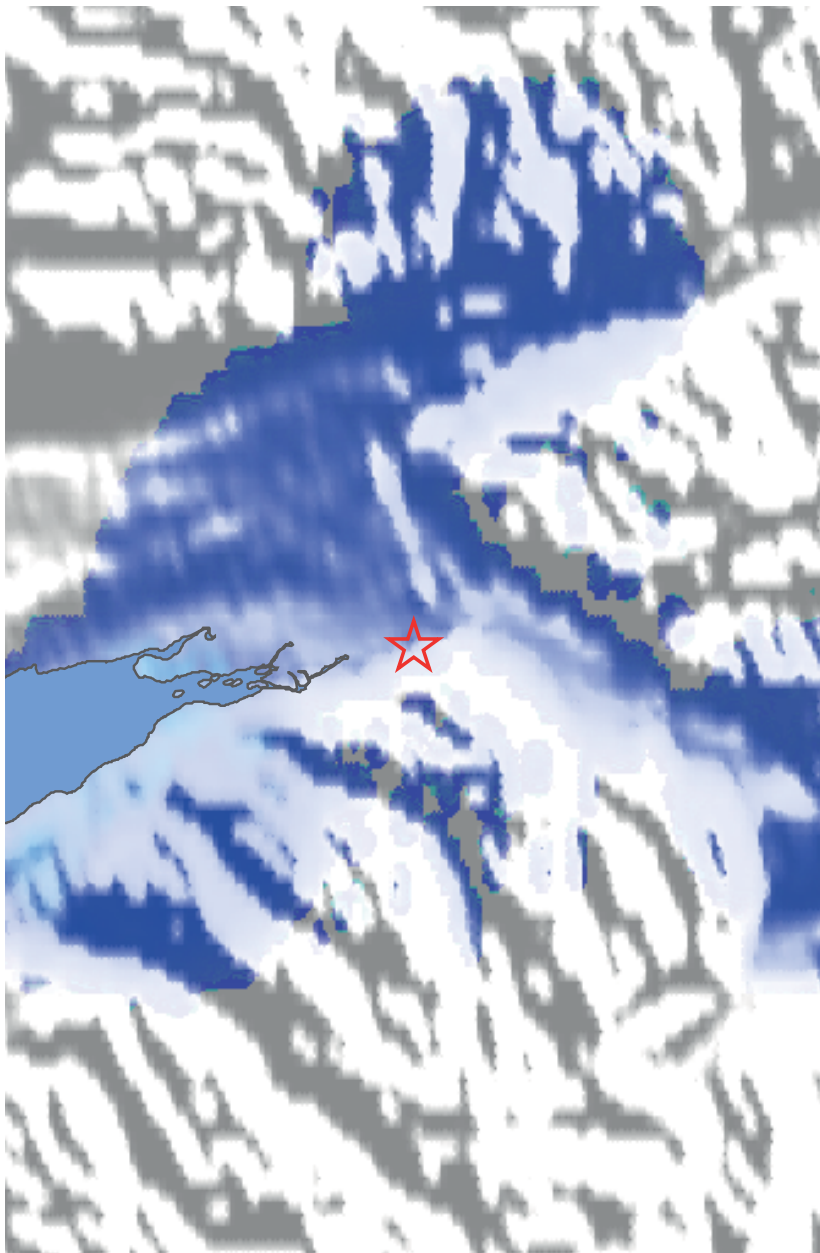


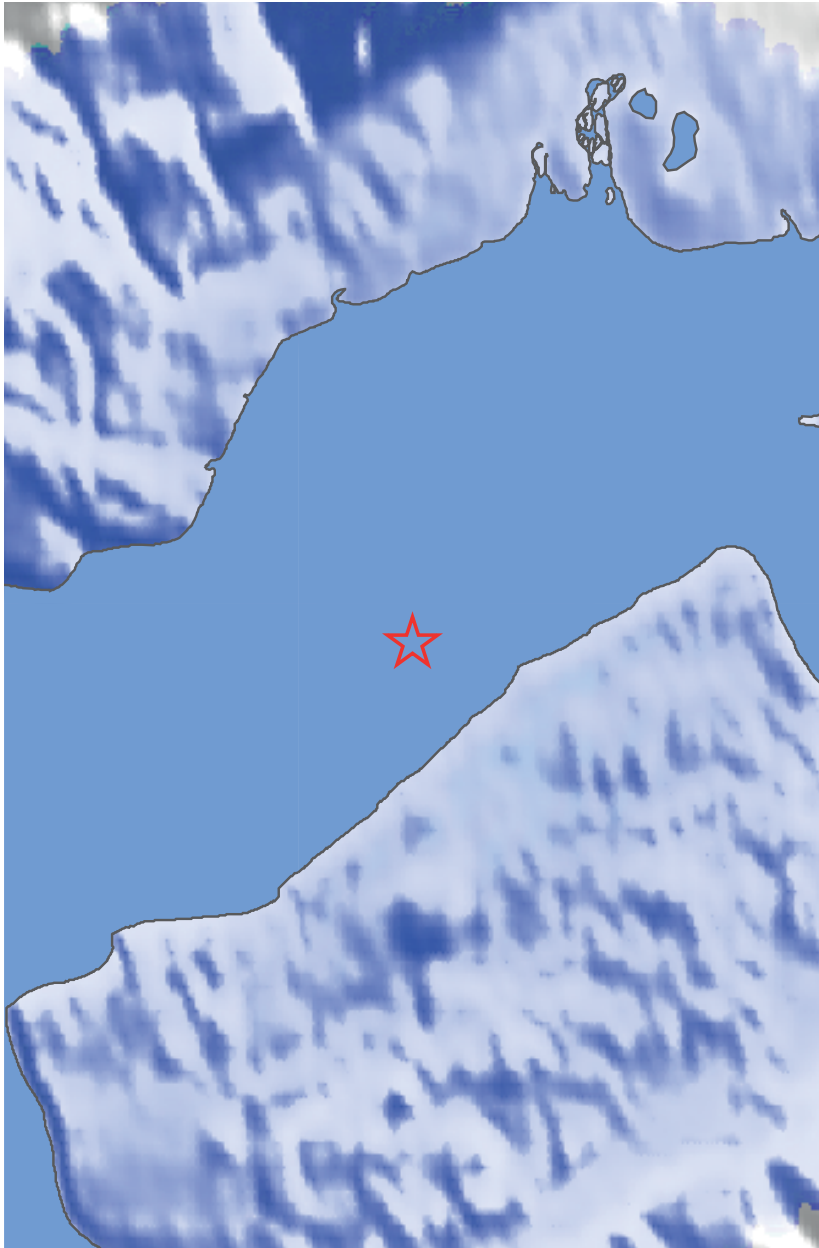


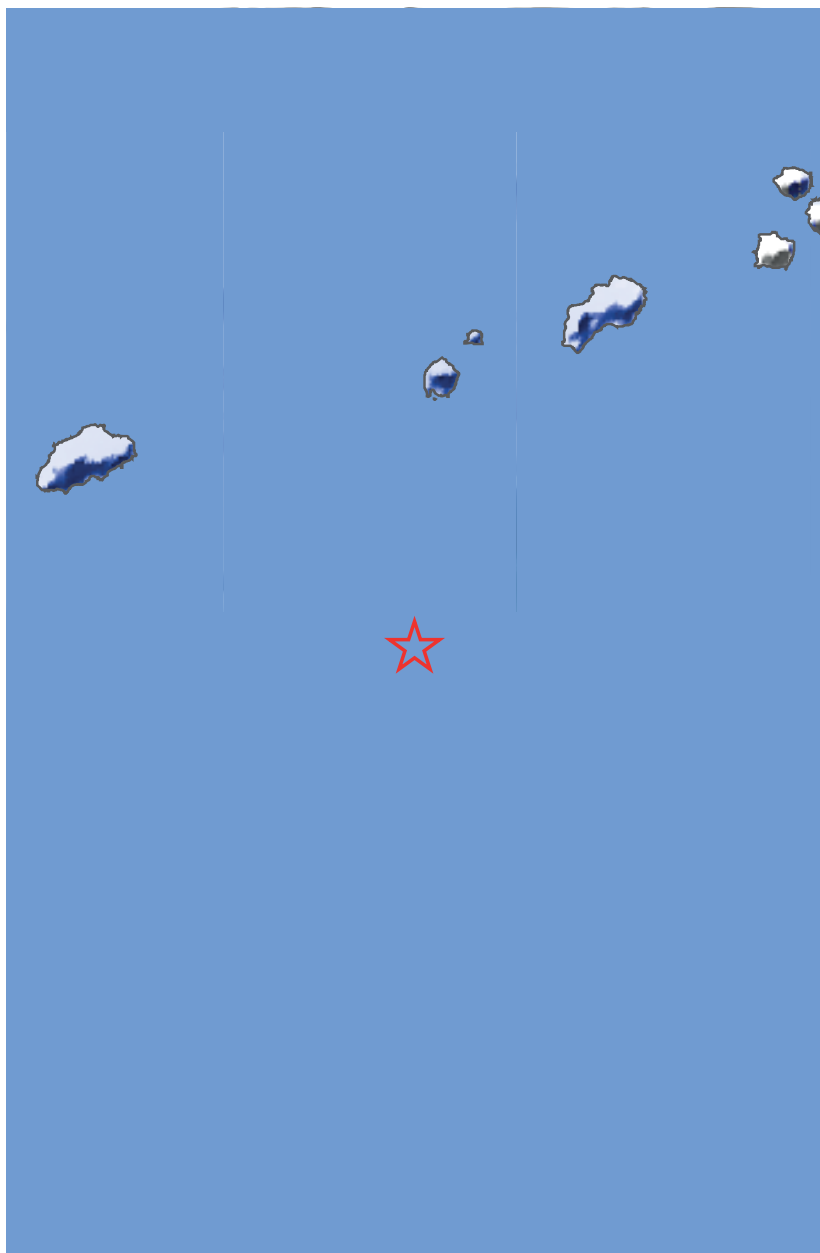


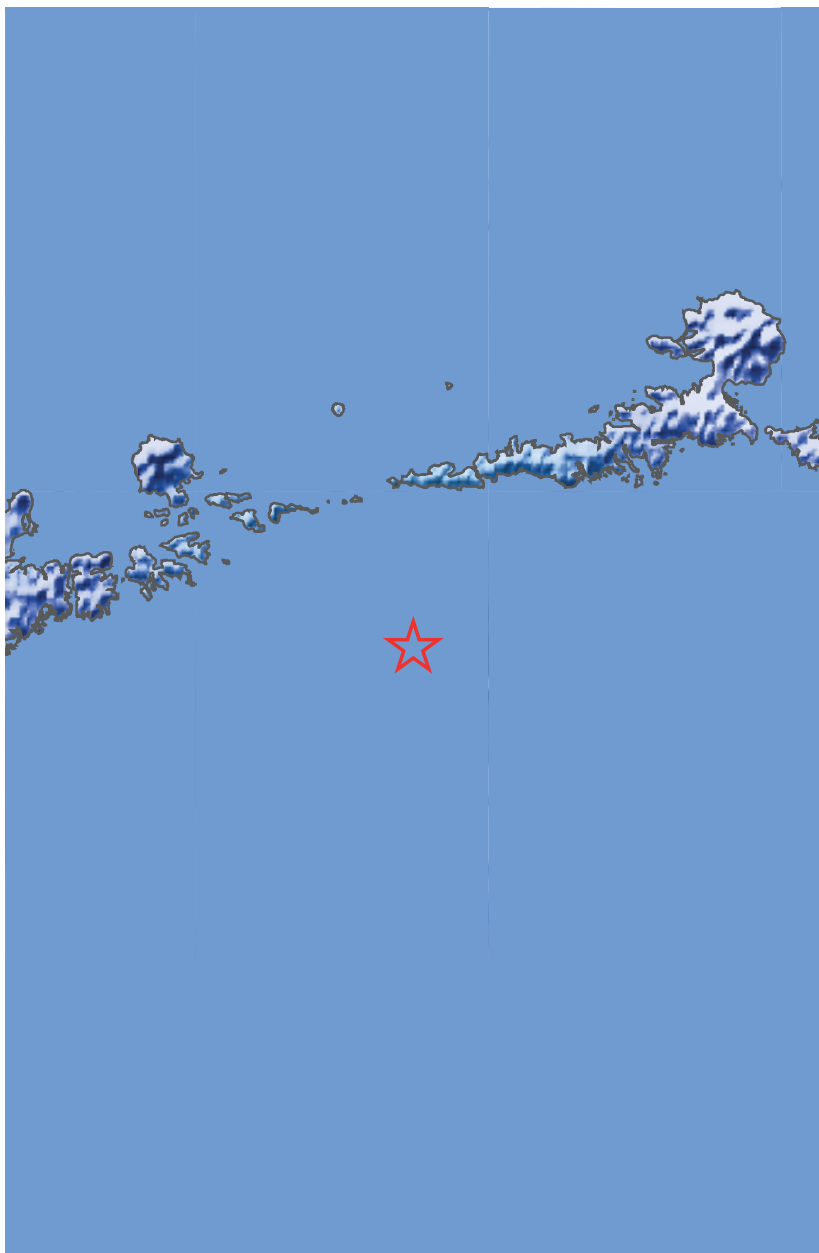


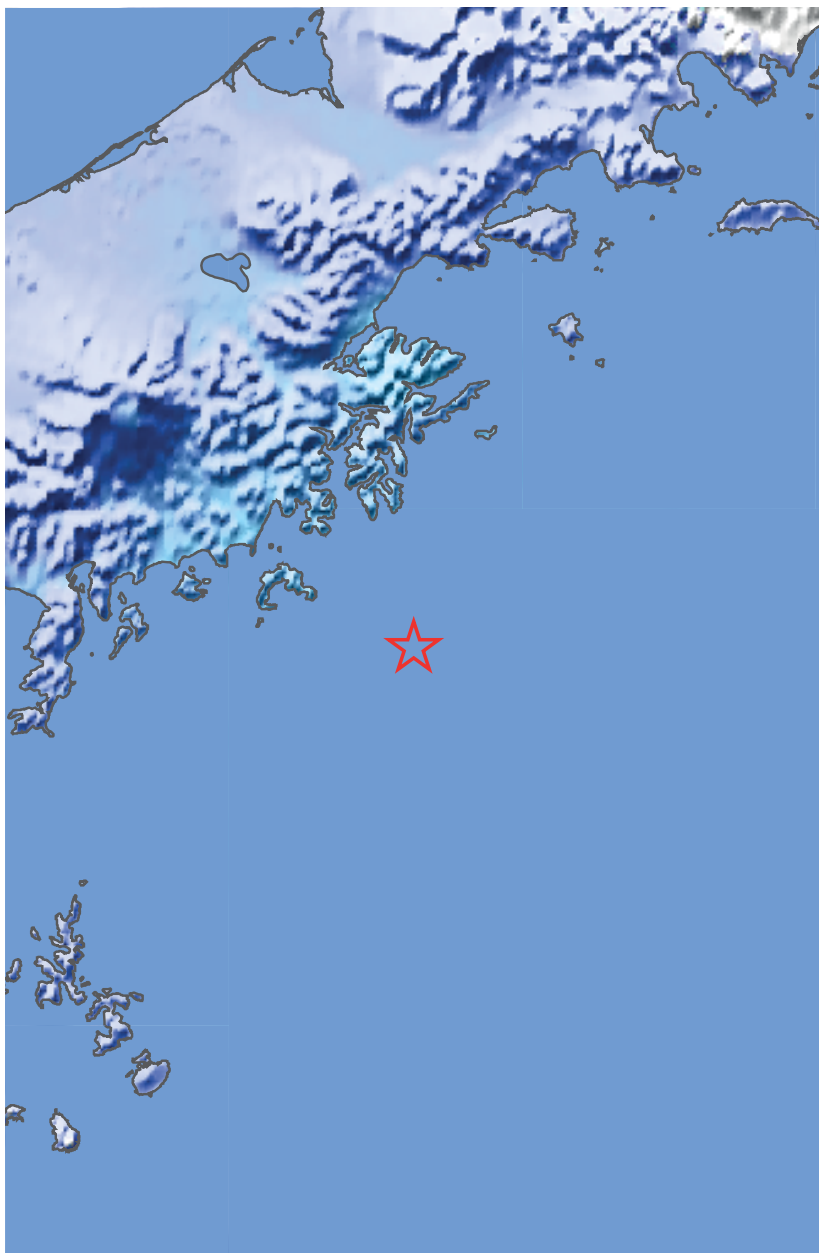


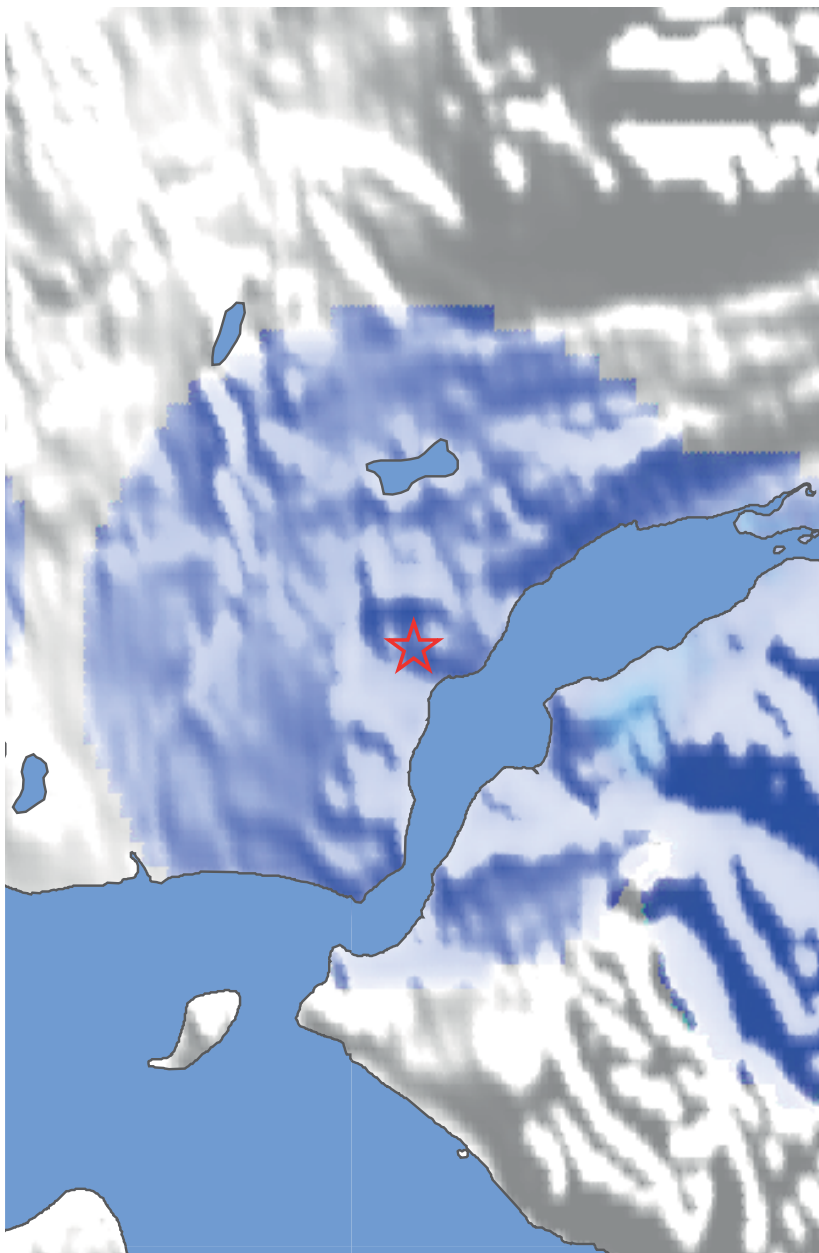


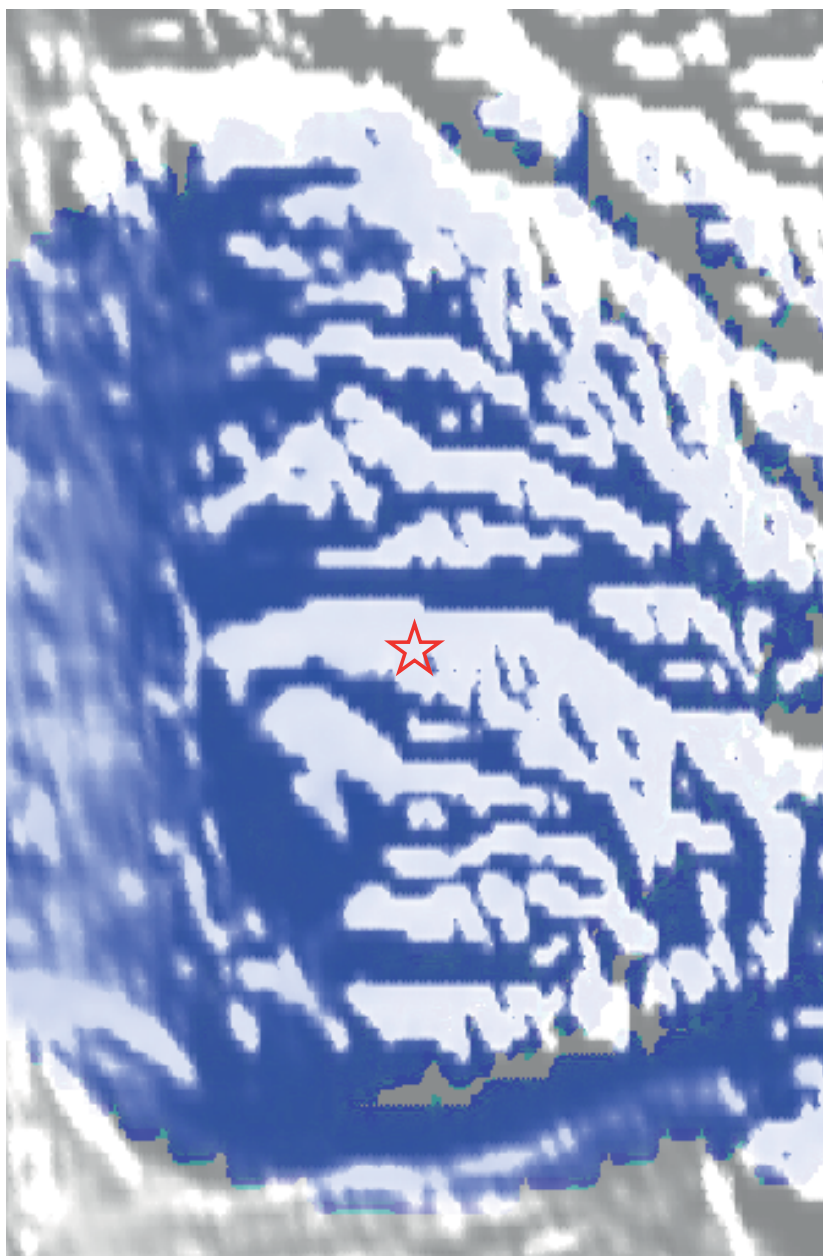


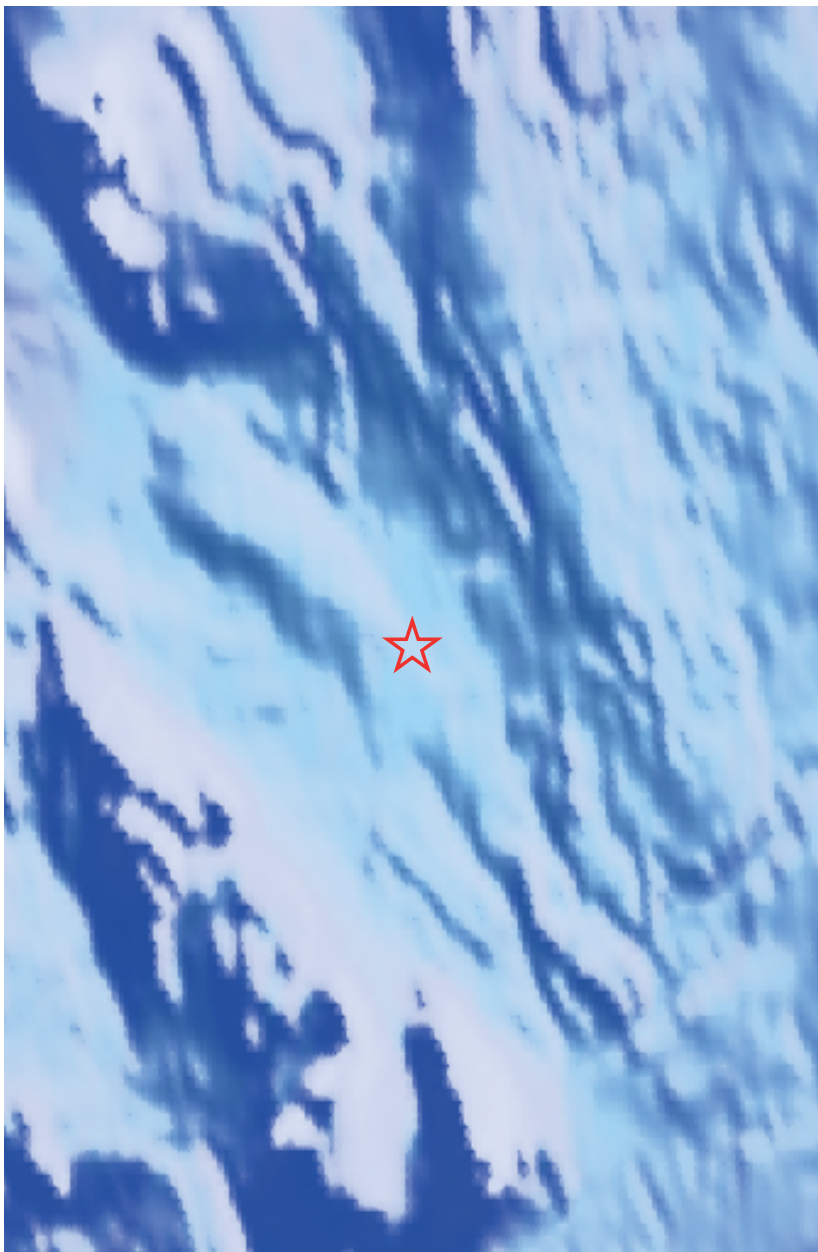


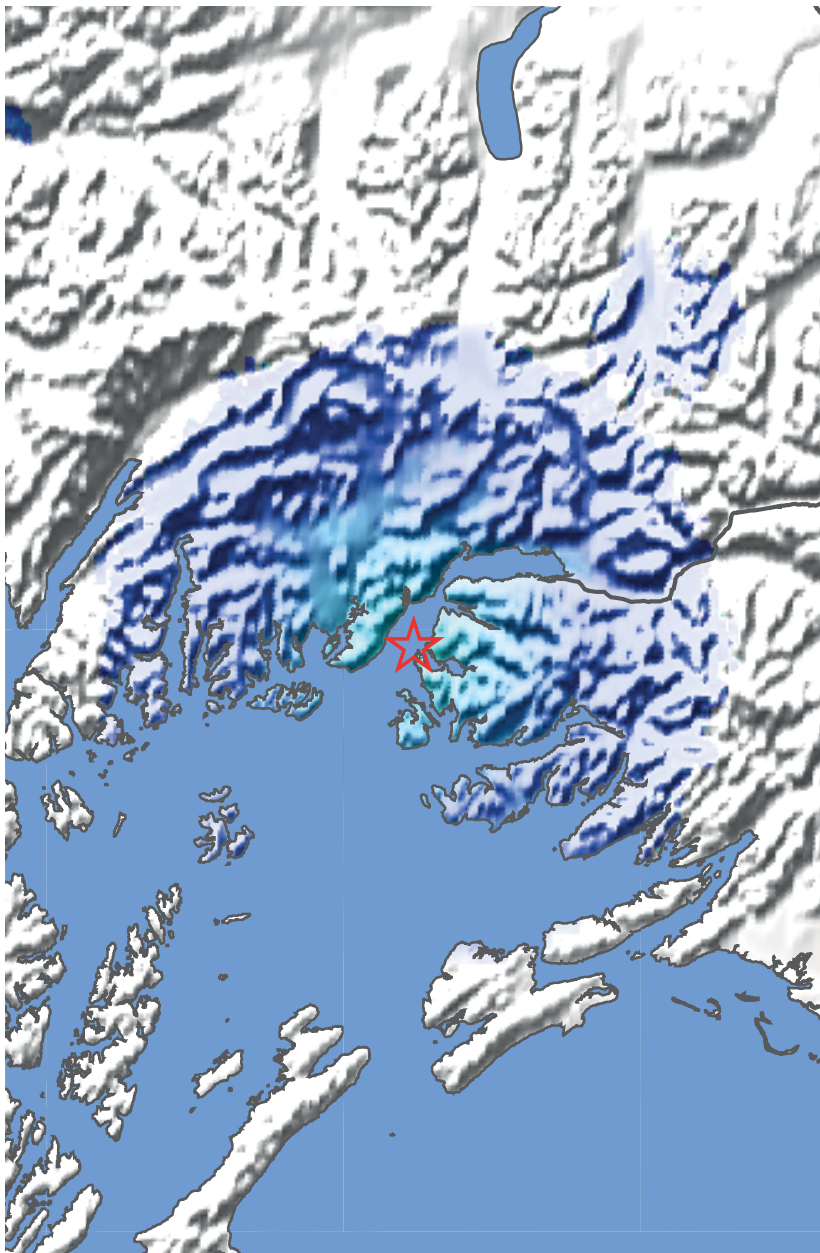




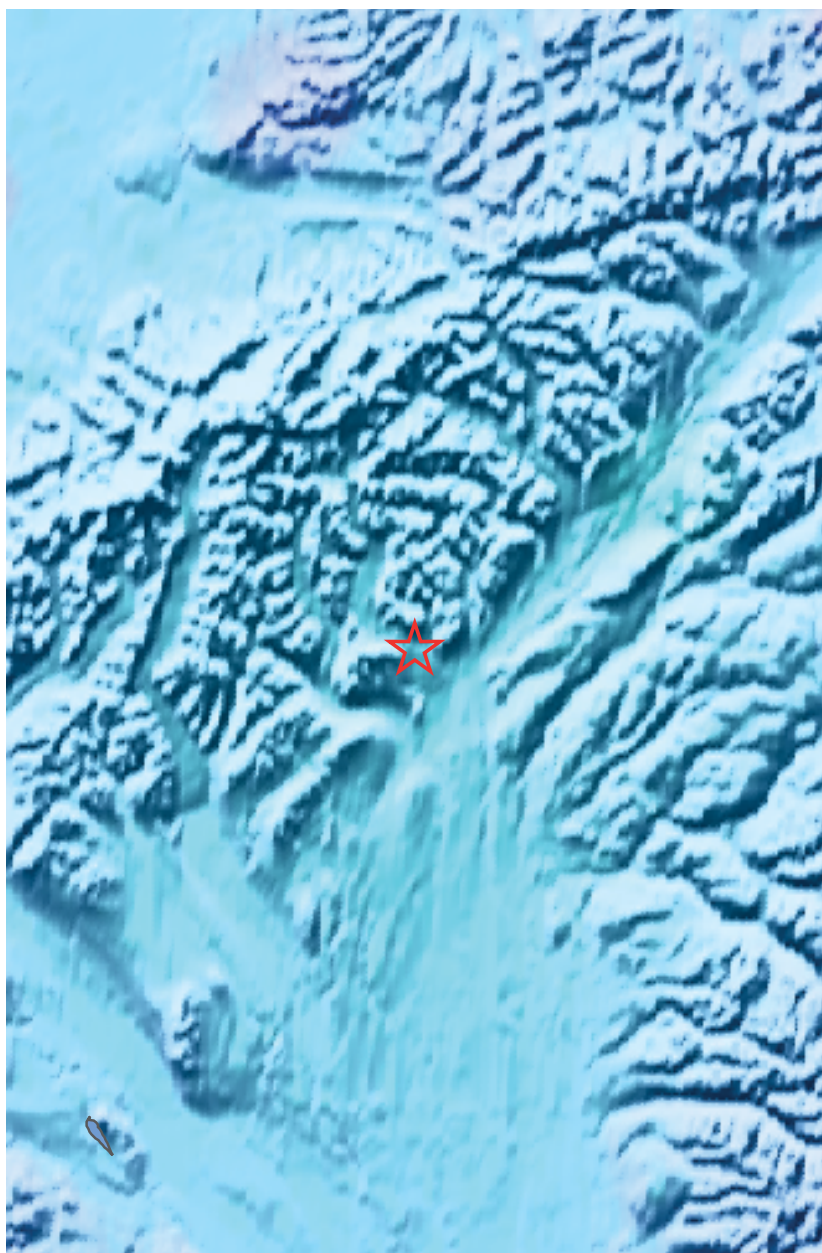


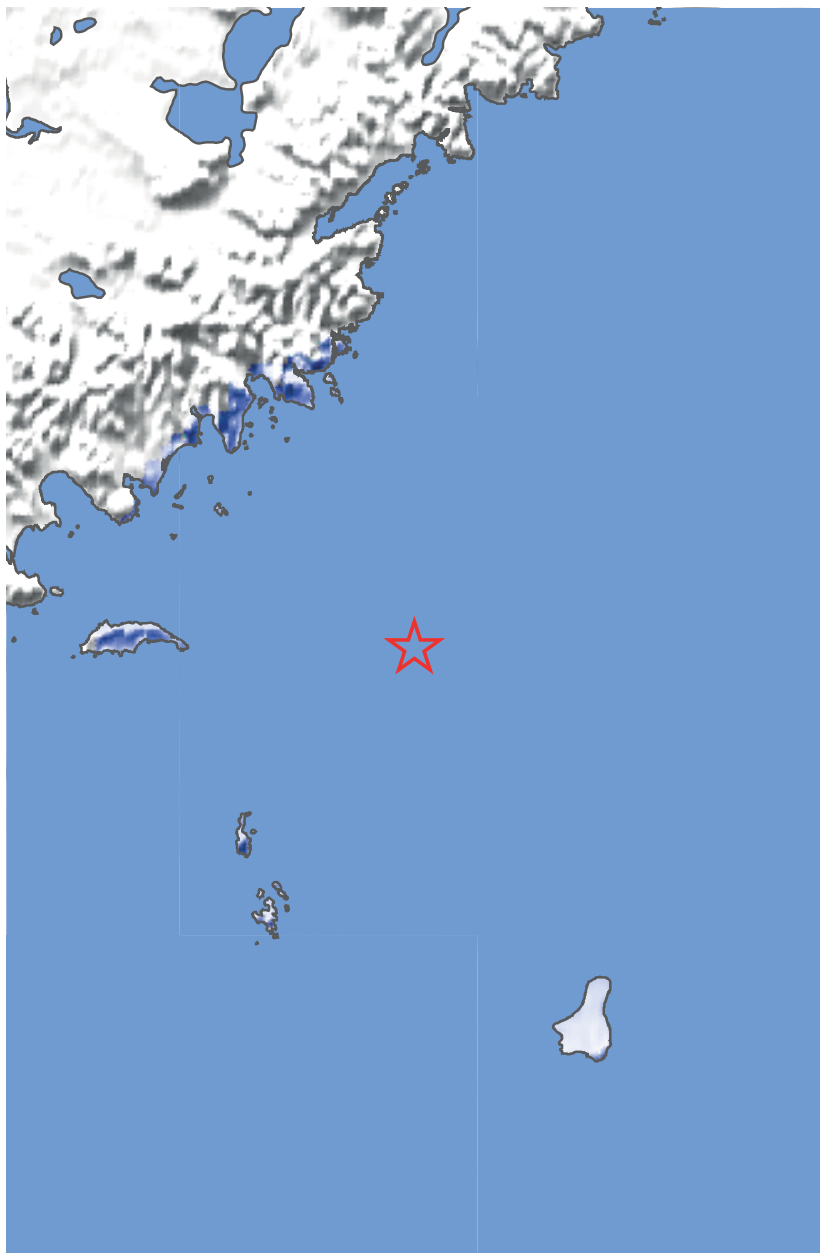












TWENTY-FOUR RECENT ALASKAN EARTHQUAKES

Tremors that are low on the Richter scale might only be sensed by seismological recording equipment rather than be felt by humans. This book contains a collection of images that have been automatically generated from sensor data, and exist as automated representations of geological events that may never have been subjectively experienced.

Michael Day 2015
<http://michaelday.org.uk>