

Cox2p of yeast cytochrome oxidase assembles as a stand-alone subunit with the Cox1p and Cox3p modules.

Leticia Veloso R. Franco*, **Chen-Hsien Su***, **Gavin P. McStay[&]**,
George J. Yu* and **Alexander Tzagoloff^{*#}**

From the *Department of Biological Sciences, Columbia University, New York, NY 10027;
[&]Department of Biological Sciences, Staffordshire University, Stoke-on-Trent, ST4 2DF, United Kingdom

Running title: Cox2p assembly module of yeast cytochrome oxidase

[#] To whom correspondence should be addressed: Alexander Tzagoloff, Department of Biological Sciences, Columbia University, New York, NY 10027, USA., Tel: 1 212 854 2920, Fax: 1 212 865 4682, Email: spud@columbia.edu

Key words: Cox2p module, mitochondria, cytochrome oxidase, biogenesis, *Saccharomyces cerevisiae*

ABSTRACT

Cytochrome oxidase (COX) is a hetero-oligomeric complex of the mitochondrial inner membrane that reduces molecular oxygen to water, a reaction coupled to proton transfer from the mitochondrial matrix to the intermembrane space. In the yeast *Saccharomyces cerevisiae*, COX is composed of 11-13 different polypeptide subunits. Here, using pulse labeling of mitochondrial gene products in isolated yeast mitochondria, combined with purification of tagged COX subunits and ancillary factors, we studied the Cox2p assembly intermediates. Analysis of radiolabeled Cox2p obtained in pull-down assays by native gel electrophoresis revealed the existence of several assembly intermediates, the largest of which having an estimated mass of 450–550 kDa. None of the other known subunits of COX were present in these Cox2p intermediates. This was also true for the several ancillary factors having still undefined functions in COX assembly. In agreement with earlier evidence, Cox18p and Cox20p, previously shown to be involved in processing and in membrane insertion of the Cox2p precursor, were found to be associated with the two largest Cox2p intermediates. A small fraction of the Cox2p module contained Sco1p and Coa6p, which have been implicated in metalation of the binuclear copper site on this subunit. Our results indicate that following its insertion into the mitochondrial inner membrane, Cox2p assembles as a standalone protein with the compositionally more complex Cox1p and Cox3p modules.

Mitochondrial cytochrome oxidase (COX) is a hetero-oligomeric complex of the inner membrane that uses the electrons of ferro-cytochrome c to reduce molecular oxygen to water, a reaction that is coupled to the transfer of protons from the internal matrix compartment to the intermembrane space (1). In *Saccharomyces cerevisiae* COX is composed of 11 different polypeptides of which three, encoded in mitochondrial DNA, form the catalytic core with the heme A and copper prosthetic groups. The remaining 8 subunits are gene products of nuclear DNA that physically surround the three core subunit. These structural subunits do not appear to participate in either the electron or proton transferring activities of COX and are thought to shield and extend the half-life of this complex. Eleven COX subunits have homologues in bovine COX (1). Recently, two new subunits, Cox26p and Cox16p, have been reported to be physically associated with yeast COX. Cox26p is stoichiometric with the other subunits of COX in the supercomplexes (2, 3). Cox16p, a mitochondrial protein previously thought to be an assembly factor (4), was recently shown to be physically associated with yeast COX (5).

There has been a surge of interest in the past few years on the part of several laboratories to clarify the mechanism by which mitochondria biosynthesize this important respiratory complex (6-10). Pulse-chase analysis of COX intermediates in isolated mitochondria have revealed that the core Cox1p and Cox3p subunits assemble independently with their own proprietary set of nuclear-encoded subunits before the resultant modules assemble with each other.

Most, if not all the structural subunits have been found to be associated with Cox1p and Cox3p (11,12). In addition to the structural subunits the Cox1p module also contains translational regulators Mss51p, Cox14p and Coa3p as well as several other factors involved in the maturation of the protein (13-19).

In the present study we have analyzed the composition of the Cox2p module. Pulse-chase labeling of mitochondria disclosed the existence of several Cox2p assembly intermediates, the largest of which has an apparent mass of 450—550 kDa. Pull-down assays of tagged subunits of COX and of accessory factor known to be required for COX assembly, some with still poorly understood functions, were not found to be present in the Cox2p intermediates. Cox20p and Cox18p with functions in membrane insertion and processing of the Cox2p precursor have been shown to interact with Cox2p in yeast and human mitochondria (20, 21). Our evidence indicates that Cox18 and Cox20 interact sequentially with the two largest Cox2p intermediates. Based on these results we propose that unlike Cox1p and Cox3p that acquire specific subsets of nuclear-encoded subunits before assembling into COX, Cox2p interacts with the Cox1p and Cox3p assembly modules as a stand-alone core protein.

RESULTS

Properties of strains expressing tagged

Cox2p – To study assembly Cox2p in yeast, we fused the *COX2* gene to two different sequences, one coding for the hemagglutinin tag (HA) and the other for a tandem HA followed by a protein C tag (HAC). Substitution of the fusion genes (*COX2-HA* and *COX2-HAC*) for the *cox2* null allele of aMRSΔCOX2 restored growth of this mutant on non-fermentable carbon sources

(Fig. 1A). Strains containing the fusion genes in their mitochondrial DNA (mtDNA) were confirmed by Western analysis to express Cox2p with the corresponding tags (Fig. 1B).

The presence of the HAC tag on Cox1p and Cox3p was previously used to affinity purify COX intermediates and super-complexes containing the fully assembled enzyme (10, 12). The accessibility of the tag of Cox2p-HAC to the protein C antibody and the extent of purification attained by a single affinity step was examined by extracting mitochondria from aMRS/COX2-HAC with lauryl maltoside and purifying the extract on the protein C antibody beads (Fig. 1C). The purity of COX in the fraction eluted from the protein antibody beads was assessed by silver staining of proteins separated by SDS-PAGE on a 17.5% polyacrylamide gel. With the exception of a few high molecular contaminants, the other proteins in this fraction corresponded to known subunits of COX (Fig. 1D). Immunochemical (Fig. 1E) and enzymatic assays (Fig. 1F) of COLX indicated that the HAC tag on Cox2p reduced both COX assembly and activity by approximately 20%.

Detection of Cox2p intermediates in mitochondria - Mitochondria from the parental wild type, MRS/COX2-HAC, and MRSI⁰/COX1-HAC, the latter two expressing Cox2p-HAC and Cox1p-HAC, respectively, were radiolabeled with ³⁵S-methionine plus ³⁵S-cysteine. The mitochondria were extracted with digitonin and purified on protein C antibody beads. Total mitochondrial proteins and the purified fraction eluted from the antibody beads with EDTA were separated by SDS-PAGE on a 12% polyacrylamide gel, transferred to nitrocellulose and exposed to X-ray film. The autoradiograph disclosed that the EDTA eluate obtained from the

MRS/COX2-HAC mitochondria contained predominantly Cox2p-HAC² and less prominently Cox1p, Cox3p and cytochrome *b* bands (Fig. 2A). The presence of the latter two subunits is consistent with the results of the blue native gel, which indicated co-purification on the protein C antibody beads of super-complexes with one and two units of COX per bc1 complex (Fig. 2B). Most of the Cox3p in the purified fraction is contributed by COX, some of which is associated with the supercomplexes. Some tag-independent Cox3p, however, is adsorbed to the antibody beads (10). The lack of stoichiometry of Cox1p with the other two COX subunits was previously observed in studies of Cox1p and Cox3p intermediates (10, 12) and can be explained by dilution of newly synthesized radiolabeled Cox1p by the large steady-state pool of the mitochondrial Cox1p (D3 and D4) intermediates (10).

Two bands (B1, B2), detected by BN-PAGE¹ migrated as a single diffuse band on a 4-13% native gel. These bands migrated differently from Cox1p intermediates D1-D5 (Fig. 2E) (10). The presence of Cox2p in the B1 and B2 intermediates was confirmed by SDS-PAGE electrophoresis in the second dimension (Fig. 2C).

The third prominent region of radioactivity consisted of a broad band that migrated in the region of the COX dimer, slightly below the 480 kDa marker (Fig. 2B, 2E). Our data suggests that this region includes two intermediates (B3 and B4) and that the latter overlaps with the COX dimer. This is supported by pull-down experiments with strains expressing either Cox18p or Cox20p with HAC tags (see below).

Consistent with its lower methionine and cysteine content, labeling of Cox2p is significantly less than of Cox1p and Cox3p (10, 12). This is evident by comparing labeling of Cox1p and Cox2p-HAC in

digitonin extracts separated by SDS-PAGE (Fig. 2D) and of affinity purified Cox1p intermediates D3 and D4 with the Cox2p intermediates B3 and B4 separated by BN-PAGE (Fig. 2E). Because of the lower level of Cox2p, labeling experiments required longer exposure times to X-ray film, resulting in a higher background from non-specific adsorption of radiolabeled proteins to the beads. This is especially true of the abundant D4 intermediates of Cox1p and of Cox3p that has a tendency to adsorb non-specifically to the protein C antibody beads (Fig. 2C, top panel).

Labeling and assembly of COX and the bc1 complex in mitochondria from cells grown in the presence of chloramphenicol

Growth of yeast in the presence of chloramphenicol (CAP), an inhibitor of mitochondrial but not cytoplasmic ribosomes, enhances translation of some mitochondrial gene products such as Atp9p, most likely by increasing the pool of nuclear encoded subunits that normally interact with their partners translated on mitochondrial ribosomes (23). Mitochondria of chloramphenicol treated and non-treated cells did not show a significant difference in translation of either Cox1p or Cox2p. Labeling of cytochrome *b*, however, was significantly increased in mitochondria of cells that had been treated with chloramphenicol (Fig. 3A). The chloramphenicol treatment also elicited a significant increase in co-immunoadsorption with Cox2-HAc of the cytochrome *b* component of the bc1 complex (Fig. 3A). Blue native gels of affinity purified Cox2p-HAC revealed an increase of radiolabeled in the COX/B3-B4 region and even more significant increase of labeled supercomplexes (Fig. 3B). Two dimensional BN- followed by SDS-PAGE indicated that the increase in radiolabeled

supercomplexes was due largely to co-immunoadsorption of cytochrome *b* in the bc1 complex of the supercomplexes (Fig. 3C, lower panel).

Pulse-chase Cox2 intermediates

The precursor product relationship of the Cox2p assembly intermediates was studied by pulse-chase labeling of mitochondria expressing Cox2p-HAC. Mitochondria from cells that had been incubated in medium containing chloramphenicol for 2 hours were pulsed for 5 min with radiolabeled methionine and cysteine and chased for different times following addition of puromycin and excesses unlabeled methionine and cysteine. The fractions obtained after extraction with digitonin and purification on protein C antibody beads were separated by SDS- and BN-PAGE. Quantitation of radioactivity in the supercomplexes and the B1 plus B2, the B3 and the B4/COX regions of the native gel indicated a time- dependent decrease of radiolabel from the intermediates and an increase of label in the supercomplexes (Fig. 4B, C and D). It was not possible to distinguish what fraction of the decrease in the B1/COX region is contributed by the B1 intermediate and/or by COX as both would be expected to be incorporated into the supercomplexes.

The SDS-PAGE gel of the eluates from the protein C antibody beads shows an increase of radiolabeled cytochrome *b* during the chase (Fig. 4A, 4C). This increase reflects the incorporation of cytochrome *b* into the bc1 complex that is incorporated into the supercomplexes and co-immunoadsorbed with Cox2p-HAC on the antibody beads.

Interaction of structural subunits with the Cox2p module

Subunits of COX imported into mitochondria from the cytoplasm were previously shown to be selectively associated with the Cox1p and Cox3p module (11, 12). The exception was Cox4p, which was present in both the Cox1p and Cox3p modules (12). To complete the analysis of this set of COX constituents, mitochondrial were isolated from strains expressing Cox9p (subunit 7a), Cox12p (subunit 6b) and Cox16p (4, 5, 24) with an HAC or CH tag at their C-termini. In prior studies all the other structural subunits had been assigned to either the Cox1p or Cox3p modules (10-12). Cox9p and Cox12p, in particular, were good candidates to be components of the Cox2p module as they both make direct contact with Cox2p in mature COX (25).

Co-immunoadsorption of Cox2p with the tagged proteins, including Cox2p as a positive and Cox13p as a negative control, was also examined in an *mss51* null mutant that lack COX (22) and Cox1p intermediates (11). The presence of radiolabeled Cox2p-HAC was determined by the SDS-PAGE and of Cox2p assembly intermediates by BN-PAGE. As expected the *mss51* mutation did not affect pull-down on the protein C antibody beads of tagged Cox2p (Fig. 5A and 5B). Significantly, radiolabeled Cox3p did not co-immunopurify with Cox2p-HAC in the *mss51* mutant (Fig. 5A) suggesting the absence of any significant interaction of Cox2p with Cox3p in the absence of Cox1p.

Cox13p was previously been found to be associated with the Cox3p module (12). As expected newly translated Cox2p in the *mss51* mutant expressing Cox13p-HAC was not detected in the fraction eluted from the protein C antibody beads (Fig. 5A and 5B), confirming that this subunit is not a component of the Cox2p intermediates. This was also true of Cox9p or Cox12p neither of which was found to be in the Cox2

intermediates. Purification on protein C antibody beads of tagged Cox12p-HAC from W303/COX12-HAC displayed a radiolabeled band at the position of B4/COX but not B3 (Fig. 5D). Neither COX nor the supercomplexes were present in the *mss51* mutant. The Cox12-HAC purified from this strain did not contain any radiolabeled COX subunits (Fig. 5C) nor were the B3 or B4 intermediates detected on the native gel (Fig. 5D). Similar results were obtained with strains expressing Cox9p-HAC (Fig. S1).

Interaction of COX assembly factors with the Cox2p module

The Cox1 and Cox3 modules have been shown to contain regulatory and assembly factors (14-18, 26-28). To ascertain if this is also true of the Cox2p module, pull-down assays were done with strains expressing Pet100p-CH (29, 30), Pet117p-CH (31-32), Cox18p-HAC (33), Cox20p-HAC (34), Sco1p-CH (35) and Coa6p-CH (36). The functions of Pet100p or Pet117p are still poorly understood. Both are essential for COX assembly, but are not present in the mature complex. Purification on protein C beads of these assembly factors tagged with CH indicated that Pet100p (Fig. 5E, 5F) and Pet117 (Fig. S1) are not associated with either the Cox2p or the other two COX modules.

Two other factors, Cox18p and Cox20p, promote transfer of the C-terminal domain of Cox2p to the intermembrane side of the inner membrane (33, 34). Both factors physically interact with Cox2p in yeast (20) and in human mitochondria (21). The presence of yeast Cox18p and Cox20p in the Cox2p intermediates was examined in strains expressing each protein with C-terminal HAC tag. The presence of the tag did not compromise the function of either Cox18p or Cox20p as evidenced by the normal growth on non-fermentable carbon

sources of strains expressing the tagged in lieu of the wild type proteins (Fig. 6A).

Cox18p-HAC and Cox20p-HAC were adsorbed to protein C antibody beads from digitonin extracts of mitochondria that had labeled been labeled with ³⁵S-methionine and ³⁵S-cysteine. SDS-PAGE of the fraction eluted from the beads indicated an enrichment of Cox2p but not Cox1p or Cox3p. This result confirms that the yeast Cox18p and Cox20p, like their human counterparts are associated with newly translated Cox2p (Fig. 6B). Analysis of the same fractions on a native gel showed that Cox2p pulled down by Cox18p-HAC migrated with an apparent mass of 350 to 550 kDa and Cox20-HAC of 450 and 550 kDa (Fig. 6C), suggesting that Cox18p interacts with the B3 intermediate before Cox20p. As indicated earlier, the in-gel enzymatic assay indicates that intermediate B4 containing Cox20p co-migrates with dimeric COX (Fig. 6D).

We also tested the presence of Sco1p and Coa6p in the Cox2 module. Both proteins have been implicated in metalation of the binuclear Cu_A center of Cox2p. Sco1p was shown to transiently bind to Cox2p (37) and has been implicated in maturation of the Cu_A center in the human subunit (35, 38). More recently, studies of patients deficient in COX have uncovered another protein, Coa6p, that interacts with Sco1p (39) and also appears to function in maturation of the Cu_A site (33, 40). Mitochondria of strains expressing Sco1p-CH and Coa6-CH were labeled *in vitro* and the two tagged proteins purified on protein C antibody beads. In both cases the protein fraction eluted from the beads was enriched in radiolabeled Cox2p (Figs. 7A, B and 7C, D). Although the Cox2p signals were weak, they were consistently higher than the background of radiolabeled proteins non-specifically bound to the beads (see wild type in Figs. 7B and

7D). The signal of newly translated Cox2p-HAC in MRS/COX2-HAC, most of which is associated with the intermediate, was significantly greater than that of the Cox2p enriched with Sco1p-CH and Coa6-CH. This suggests that only a small fraction of the Cox2 module contains these proteins. This is also supported by the blue native gel of the eluates from the protein C antibody beads, which indicated that very little of Cox2p intermediates were pulled-down by Sco1p-CH and Coa6p-CH (Fig. 7E, 7F). This circumstance preempted identifying the intermediate(s) containing Sco1p and Coa6p in strains with null mutations in genes coding for these proteins. The patterns of labeled Cox2p intermediates in the *sco1* and *coa6* null mutants did not differ from wild type (not shown).

DISCUSSION

Cox2p is one of the three subunits that make up the catalytic core of COX. It is translated on mitochondrial ribosomes with an N-terminal 15 amino acid long extension that is proteolytically removed during insertion of the protein into the inner membrane. Membrane insertion of Cox2p is co-translation and requires the IMP protease complex to process the Cox2p precursor (41) and the Cox2p-specific factors Cox18p and Cox20p to transfer the large hydrophilic C-terminal domain across the inner membrane (23, 34). Cox2p interacts directly with core subunits Cox1p and Cox3p, and with two structural subunits, Cox9p and Cox12p, that are encoded in nuclear DNA (25).

In previous studies we characterized two intermediates of yeast COX, one containing Cox1p and the other Cox3p. The Cox1p and Cox3p intermediates were shown to assemble independently into modules that interacted with each other to form COX (10, 12). Significantly, each module contained a

specific subset of the nuclear encoded structural subunits. The subunits associated with each module corresponded to the same ones that are associated with Cox1p and Cox3p subunits in mature COX (Fig. 8). In addition to the structural subunits, the modules contain regulatory and assembly factors that act on Cox1p or Cox3p (14-18, 26-28).

In this study we examined the composition of the Cox2p assembly intermediates by the approach used previously to characterize the Cox1p and Cox3p modules. Pulse labeling and pulse-chase analysis of mitochondria from a yeast strain expressing Cox2p with a C-terminal protein C plus HA double tag disclosed the existence of several intermediates ranging from 100 to 450 kDa. The largest intermediate (B4) migrated in the same region as dimeric COX but could be distinguished from the latter in a COX mutant.

Cox9p and Cox12p, are known to make contact with Cox2p in the mature enzyme (25). As neither of these two subunits had previously been detected in the Cox1p or Cox3p modules, they were good candidates to be associated with newly translated Cox2p. This expectation, however, is not supported by the results of pull-down experiments. Cox2p did not co-immunopurify with tagged Cox9p or Cox12p of mitochondria in which the endogenous gene products had been pulse-labeled with ³⁵S-methionine and cysteine. This suggests that these subunits interact with Cox2p after it assembles with the Cox1p and Cox3p modules. However, we cannot exclude the alternative possibility that the interaction of Cox9p and Cox12p with Cox2p may be too weak to withstand the solubilization and purification protocol used in the pull-down assay.

Cox2p intermediates were tested for the presence of accessory factors Pet110p and Pet117p. Pull-down assays of tagged Pet100p and Pet117p indicated that neither assembly factor is present in the Cox2p intermediates. They were also not detected in the Cox1p and Cox3p modules, suggesting that their role is unrelated to either maturation or regulation of expression of the catalytic subunits. We also examined which Cox2p intermediates contain Cox18p, Cox20p, Sco1p and Coa6p. Cox18p and Cox20p are involved in insertion of the Cox2p hydrophobic transmembrane sequences into the phospholipid bilayer, transfer of the hydrophilic domain with the Cu active site across the inner membrane and proteolytic removal of the N-terminal presequence of the Cox2p precursor (33, 34). Sco1p and Coa6p have been implicated in maturation of the CuA site of Cox2p (36-40). The results of pull down assays indicated Cox18p and Cox20p to be associated with the two largest Cox2p intermediates. This is consistent with earlier evidence that they interact with yeast (20) and human (21) Cox2p. The presence of Cox20p in B4 and of Cox18p in both B3 and B4 suggest that the interaction of Cox18p with the Cox2p precursor precedes that of Cox20p.

Yeast Sco1p and Coa6p, like their human counterparts, form complexes with Cox2p intermediates (39, 40). In both cases the interactions appear to be transient as only a small fraction, of the newly translated Cox2p co-immunopurified with tagged Sco1p and Coa6p. Most of Cox2p pulled down by tagged Coa6p is associated with the B3 intermediate suggesting the function of Sco1p and Coa6p is exercised at a late stage of Cox2p biogenesis.

In view of the absence of any of known COX structural subunits in the B4 intermediate Cox2 probably interacts with

the Cox1p and/or Cox3p modules without its direct partner subunits in COX (Cox9p and Cox12p). Shedding of Cox18p and Cox20p from the B4 intermediate must occur prior to assembly of Cox2p with its Cox1p and Cox3p partners. This is supported by the earlier finding that fully processed Cox2p is detected in a *cox4* mutant defective in assembly of COX and with greatly reduced steady state concentrations of Cox1p (33).

MATERIALS AND METHODS

Strains and growth media

The genotypes and sources of the *S. cerevisiae* strains used in this study are described in Table S1. The compositions of solid and liquid YPD, YPGal and YEPG have been described previously (42).

Construction of hybrid genes with HA and tandem HA plus protein C tags.

COX2 was first modified at the 3' end to express Cox2p with an HA tag. The gene was PCR amplified with the forward primers *cox2-5* starting 500 bp upstream of the gene and *cox2-13*, which contained the sequence complementary to the HA tag followed by the sequence complementary to the last 8 codons of the gene. The PCR fragment was digested with a combination of SacI and BamHI and was cloned into pUC19/COX3 (pUC19 with *COX3* inserted at the HindIII site of the multiple cloning sequence). The plasmid obtained from this ligation (pCOX2/ST10) was fused to a BamHI-PstI fragment with 500 bp of *COX2* 3'-UTR obtained with primers *cox2-11* and *cox2-12*. The *COX2-HA* gene in pCOX2/ST10 was used as the template for amplification of *COX2-HAC* with primers *cox2-5* and HA-protC. The amplified sequence consisting of 500 bp 5'-UTR followed by *COX2* plus the sequence coding for the HAC double tag, was substituted for the SacI-BamHI fragment of pCOX2/ST10

to obtain pCOX2/ST11 containing COX2-HAC plus 500 bp of 5' and 3' flanking sequences.

Plasmids pCOX2/10 and pCOX2/ST11 were each introduced into the *kar1* ρ^0 strain DFK160 by biolistic transformation. DFK160 is identical to DFS160 (43) except that it has an additional *lys2* mutation. The hybrid *COX2* genes in DFK160 transformants were substituted for the *cox2* null allele of MRS Δ COX2 by recombination. The latter strain was obtained by transferring the mitochondrial genome of HMD22 with the *cox2* mutation to MRS-3B ρ^0 . The sequences of the primers used for the constructs in this and subsequent section are listed in Table S2.

Construction of a *pet100* null allele.

A plasmid (pG135/ST1) containing a BamHI fragment with *PET100* and approximately 500 bp of 5'- and 3'-UTR sequences in YEp352 (44) was digested with BglII and NheI to remove 26 nucleotides internal to the gene. The gapped plasmid was ligated to a 1 kb BamHI-XbaI fragment containing *HIS3* to produce pG135/ST2. The *pet100::HIS3* allele, obtained as a BamHI fragment from pG135/ST2 and was introduced by homologous recombination (45) in the respiratory competent strains W303-1A and W303-1B. A similar procedure was used to obtain a *pet117* null mutant.

Construction of the *COX18-HAC*, *COX20-HAC*, *COX16-CH*, *PET100-CH*, *PET117-CH*, *SCO1-CH* and *COA6-CH* fusion genes.

The sequence coding for the HAC tag was added to these genes in two steps. First, each gene was modified to express a C-terminal HA tag by PCR amplification of approximately 500 bp of 5'-UTR plus the coding sequence. The genes were amplified

with a 5' primer consisting of 18–21 nucleotides and reverse primer with sequences complementary to the HA tag followed by 18–21 terminal codons of the gene. The resultant product was ligated to either YIp351 containing *LEU2* (44) or YIp349 with the *TRP1* selectable gene. The plasmids obtained from this ligation were used as a template for amplification with the same 5' primer and a 3' primer consisting of a sequence complementary to the protein C tag followed by two glycine codons and ending with 21 nucleotides of a sequence complementary to the HA tag. The PCR products were ligated into the same integrative plasmids.

To construct genes expressing proteins with a C-terminal poly histidine and protein C tag, 500 bp of the 5'-UTRs plus the coding sequences of *COX16*, *PET100* and *PET117* (minus the termination codons) were ligated in-frame to the sequence coding for the CH tag in the integrative *LEU2*- or *TRP1*-bearing vectors YIp351-CH and YIp349-CH, respectively. The CH tag consists of the protein C epitope followed by 3 glycines and ending with 6 histidines. The modified genes were integrated into chromosomal DNA of the appropriate null mutant by homologous recombination (45) after linearization of their plasmids at *LEU2* or *TRP1*. The strains expressing Sco1p-CH and Coa6p-CH were made the same way, except that the upstream primer started at 270 and 300 nucleotides ahead of the initiation codons, respectively. The sequences of the primers for these constructs are listed in Table S2.

Growth, isolation of mitochondria, labeling of mitochondrial gene products and purification of tagged proteins.

Yeast was grown in YPGal and mitochondria isolated as described (46). Small aliquots of mitochondria were frozen

in liquid nitrogen and stored at -80°C . Unless otherwise indicated mitochondria were labeled for 20 min at 25°C with ^{35}S -methionine plus ^{35}S -cysteine (3,000 Ci/mmol, MP Biochemicals, Solon, OH) as described previously (10). The reaction was stopped with puromycin plus excess unlabelled methionine and further incubated for an additional 10 min. Digitonin extracts of the labeled mitochondria were purified on protein C antibody beads and analyzed by SDS-PAGE and BN-PAGE (10).

Miscellaneous Procedures.

Purification, ligation and transformation of *E. coli* were done under standard conditions (47). Yeast was transformed by the lithium acetate method (48). Proteins were separated by SDS-PAGE on 12% or 17% polyacrylamide gels run in Laemmli buffer (49). Proteins were separated by BN-PAGE on 4-13% polyacrylamide gels (50). Western blots were treated with monoclonal or polyclonal antibodies followed by a second reaction with anti-mouse or anti-rabbit IgG conjugated to horseradish peroxidase (Sigma, St. Louis, MO) and proteins detected with SuperSignal chemiluminescent substrate kit (Pierce, Rockford, IL). Cytochrome oxidase activity was measured as described (51). The method of Lowry (52) was used to estimate protein concentration.

FOOTNOTES

¹Abbreviations used: BN, blue native; mtDNA, mitochondrial DNA; PAGE, polyacrylamide gel electrophoresis; PCR, polymerase chain reaction; SDS, sodium dodecyl sulfate; PC, protein C antibody beads.

²The Cox2p and pCox2p (precursor) are very poorly separated in the Laemmli SDS-PAGE system. The band identified as Cox2p may include some pCox2p.

ACKNOWLEDGEMENTS

This research was supported by NIH Grant 5R01GM111864. We thank Dr. Thomas Fox for the gift of the HMD22 strain of yeast. L.V.F and C.H.S contributed equally to this study. The content is solely the responsibility of the authors and does not necessarily represent the official views of the National Institutes of Health.

The authors have no conflicts of interest with the contents of this article

REFERENCES

1. Yoshikawa S, Muramoto K, Shinzawa-Itoh K, Aoyama H, Tsukihara T, Ogura T, Shimokata K, Katayama Y, Shimada H. (2006) Reaction mechanism of bovine heart cytochrome c oxidase. *Biochim Biophys Acta*. **1757**, 395-400
2. Levchenko M, Wuttke JM, Römpler K, Schmidt B, Neifer K, Juris L, Wissel M, Rehling P, Deckers M. (2016) Cox26 is a novel stoichiometric subunit of the yeast cytochrome c oxidase. *Biochim. Biophys. Acta*. **1863**, 1624-1632
3. Strecker, V., Kadeer, Z., Heidler, J., Cruciat, C. M., Angerer, H., Giese, H., Pfeiffer K., Stuart R. A., and Wittig, I. (2016) Supercomplex-associated Cox26 protein binds to cytochrome c oxidase. *Biochim. Biophys. Acta* **1863**, 1643-1652
4. Carlson, C. G., Barrientos, A., Tzagoloff, A., and Glerum, D. M. (2003) *COX16* encodes a novel protein required for the assembly of cytochrome oxidase in *Saccharomyces cerevisiae*. *J. Biol. Chem.* **278**, 3770-3775
5. Su, C.H., and Tzagoloff, A. (2017) Cox16 protein is physically associated with Cox1p assembly intermediates and with cytochrome oxidase. *J. Biol. Chem.* **292**, 16277-16283
6. Mick, D. U., Fox, T. D., and Rehling, P. (2011) Inventory control: cytochrome c oxidase assembly regulates mitochondrial translation. *Nat. Rev. Mol. Cell Biol.* **12**, 14-20
7. Fox, T. D. (2012) Mitochondrial protein synthesis, import, and assembly. *Genetics*. **192**, 1203-1234
8. Kim, H. J., Khalimonchuk, O., Smith, P.M., and Winge, D. R. (2012) Structure, function, and assembly of heme centers in mitochondrial respiratory complexes. *Biochim. Biophys. Acta*. **1823**, 1604-1616
9. Soto, I. C., Fontanesi, F., Liu, J., and Barrientos, A. (2012) Biogenesis and assembly of eukaryotic cytochrome c oxidase catalytic core. *Biochim. Biophys. Acta* **1817**, 883-897
10. McStay, G. P., Su, C. H., and Tzagoloff, A. (2013) Modular assembly of yeast cytochrome oxidase. *Mol. Biol. Cell* **24**, 440-452
11. McStay, G. P., Su, C. H., Thomas, S. M., Xu, J. T., and Tzagoloff, A. (2013a) Characterization of assembly intermediates containing subunit 1 of yeast cytochrome oxidase. *J. Biol. Chem.* **288**, 26546-26556
12. Su, C. H., McStay, G. P., and Tzagoloff, A. (2014a) Assembly of the rotor component of yeast mitochondrial ATP synthase is enhanced when Atp9p is supplied by Atp9p-Cox6p complexes. *J. Biol. Chem.* **289**, 31605-31116
13. Perez-Martinez, X., Broadley, S.A., and Fox, T. D. (2003) Mss51p promotes mitochondrial Cox1p synthesis and interacts with newly synthesized Cox1p. *EMBO J.* **22**, 5951-5961
14. Barrientos, A., Zambrano, A., and Tzagoloff, A. (2004) Mss51p and Cox14p jointly regulate mitochondrial Cox1p expression in *Saccharomyces cerevisiae*. *EMBO J.* **23**, 3472-3482
15. Pierrel, F., Bestwick, M. L., Cobine, P. A., Khalimonchuk, O., Cricco, J. A., and Winge, D. R. (2007) Coa1 links the Mss51 post-translational function to Cox1 cofactor insertion in cytochrome c oxidase assembly. *EMBO J.* **26**, 4335-4346
16. Mick, D. U., Vukotic, M., Piechura, H., Meyer, H. E., Warscheid, B., Deckers, M., and Rehling, P. (2010) Coa3 and Cox14 are essential for negative feedback regulation of *COX1* translation in mitochondria. *J. Cell. Biol.* **191**, 141-154
17. Fontanesi, F., Clemente, P., and Barrientos, A. (2011) Cox25 teams up

- with Mss51, Ssc1, and Cox14 to regulate mitochondrial cytochrome *c* oxidase subunit 1 expression and assembly in *Saccharomyces cerevisiae*. *J. Biol. Chem.* **286**, 555-566
18. Mayorga, J. P., Camacho-Villasana, Y., Shingú-Vázquez, M., García-Villegas, R., Zamudio-Ochoa, A., García-Guerrero, A. E., Hernández G., and Pérez-Martínez, X. (2016) A Novel Function of Pet54 in Regulation of Cox1 Synthesis in *Saccharomyces cerevisiae* Mitochondria. *J. Biol. Chem.* **291**, 9343-9355
 19. Bareth, B., Dennerlein, S., Mick, D. U., Nikolov, M., Urlaub, H., and Rehling, P. (2013) The heme a synthase Cox15 associates with cytochrome *c* oxidase assembly intermediates during Cox1 maturation. *Mol. Cell. Biol.* **3**, 4128-4137
 20. Elliott, L. E., Saracco, S. A., and Fox, T. D. (2012) Multiple roles of the Cox20 chaperone in assembly of *Saccharomyces cerevisiae* cytochrome *c* oxidase. *Genetics* **190**, 559-567
 21. Bourens M, Barrientos A. (2017) Human mitochondrial cytochrome *c* oxidase assembly factor *COX18* acts transiently as a membrane insertase within the subunit 2 maturation module. *J Biol Chem.* **292**, 7774-7783
 22. Decoster E, Simon M, Hatat D, Faye G. (1990) The *MSS51* gene product is required for the translation of the *COX1* mRNA in yeast mitochondria. *Mol Gen Genet.* **224**, 111-118
 23. Rak, M., Gokova, S., and Tzagoloff, A. (2011) Modular assembly of yeast mitochondrial ATP synthase. *EMBO J.* **30**, 920-930
 24. Aich A, Wang C, Chowdhury A, Ronsör C, Pacheu-Grau D, Richter-Dennerlein R, Dennerlein S, Rehling P (2018) *COX16* promotes *COX2* metallation and assembly during respiratory complex IV biogenesis. *Elife.* **7**. e32572. doi: 10.7554/eLife.32572.
 25. Tsukihara, T., Aoyama, H., Yamashita, E., Tomizaki, T., Yamaguchi, H., Shinzawa-Itoh, K., Nakashima, R., Yaono, R., and Yoshikawa, S. (1996) The whole structure of the 13-subunit oxidized cytochrome *c* oxidase at 2.8 Å. *Science* **272**, 1136-1144
 26. Perez-Martinez, X., Butler, C. A., Shingu-Vazquez, M., and Fox, T. D. (2009) Dual functions of Mss51 couple synthesis of Cox1 to assembly of cytochrome *c* oxidase in *Saccharomyces cerevisiae* mitochondria. *Mol. Biol. Cell* **20**, 4371-4380
 27. Fontanesi, F., Soto, I. C., Horn, D., and Barrientos, A. (2010) Mss51 and Ssc1 facilitate translational regulation of cytochrome *c* oxidase biogenesis. *Mol. Cell. Biol.* **30**, 245-259
 28. Strogolova, V., Furness, A., Robb-McGrath, M., Garlich, J., and Stuart, R. A. (2012) *Rcf1* and *Rcf2*, members of the hypoxia-induced gene 1 protein family, are critical components of the mitochondrial cytochrome *bc*₁-cytochrome *c* oxidase supercomplex. *Mol. Cell. Biol.* **32**, 1363-1373
 29. Church, C., Chapon, C., Poyton and R. O. (1996) Cloning and characterization of *PET100*, a gene required for the assembly of yeast cytochrome *c* oxidase. *J. Biol. Chem.* **271**, 18499-18507
 30. Church, C., Goehring, B., Forsha, D., Wazny, P., Poyton, R. O. (2005) A role for Pet100p in the assembly of yeast cytochrome *c* oxidase: interaction with a subassembly that accumulates in a *pet100* mutant. *J Biol Chem.* **280**, 1854-1863
 31. McEwen, J. E., Hong, K. H., Park, S., Preciado, G. T. (1993) Sequence and chromosomal localization of two PET genes required for cytochrome *c* oxidase assembly in *Saccharomyces cerevisiae*. *Curr Genet.* **23**, 9-14
 32. Taylor, N. G., Swenson, S, Harris, N J, Germany, E M, Fox, J. L, Khalimonchuk

- O. (217) The Assembly Factor *Pet117* Couples Heme a Synthase Activity to Cytochrome Oxidase Assembly. *J Biol Chem.* **292**, 1815-1825
33. Saracco, S. A., and Fox, T. D. (2002) Cox18p is required for export of the mitochondrially encoded *Saccharomyces cerevisiae* Cox2p C-tail and interacts with Pnt1p and Mss2p in the inner membrane. *Mol. Biol. Cell* **13**, 1122-1131
 34. Hell, K., Tzagoloff, A., Neupert, W., and Stuart, R. A. (2000) Identification of Cox20p, a novel protein involved in the maturation and assembly of cytochrome oxidase subunit 2. *J. Biol. Chem.* **275**, 4571-4578
 35. Glerum, D. M., Shtanko, A., and Tzagoloff, A. (1996) *SCO1* and *SCO2* act as high copy suppressors of a mitochondrial copper recruitment defect in *Saccharomyces cerevisiae*. *J. Biol. Chem.* **271**, 205312–20535
 36. Baertling, F., A M van den Brand, M., Hertecant, J. L., Al-Shamsi, A., P van den Heuvel, L., Distelmaier, F., Mayatepek, E., Smeitink, J. A., Nijtmans, L. G., and Rodenburg, R. J. (2015) Mutations in *COA6* cause cytochrome c oxidase deficiency and neonatal hypertrophic cardiomyopathy. *Human Mutation* **36**, 34-38
 37. Lode, A., Kuschel, M., Paret, C., and Rödel, G. (2000) Mitochondrial copper metabolism in yeast: interaction between *Sco1p* and *Cox2p*. *FEBS Lett.* **485**, 19-24
 38. Nittis, T., George, G. N., and Winge, D. R. (2001) Yeast *Sco1*, a protein essential for cytochrome c oxidase function is a Cu(I)-binding protein. *J. Biol. Chem.* **276**, 42520–42526
 39. Aich, A., Wang, C., Chowdhury, A., Ronsör, C., Pacheu-Grau, D., Richter-Dennerlein, R., Dennerlein, S., and Rehling, P. (2018) COX16 promotes COX2 metallation and assembly during respiratory complex IV biogenesis. *eLife* **7**, e32572
 40. Ghosh, A., Pratt, A. T., Soma, S., Theriault, S. G., Griffin, A. T., Trivedi, P. P., and Gohil, V. M. (2016) Mitochondrial disease genes *COA6*, *COX6B* and *SCO2* have overlapping roles in COX2 biogenesis. *Human Molecular Genetics* **25**, 660–671
 41. Esser, K., Pratje, E., Michaelis, G. (1996) *SOM 1*, a small new gene required for mitochondrial inner membrane peptidase function in *Saccharomyces cerevisiae*. *Mol Gen Genet.* **252**, 437-445
 42. Myers, A. M., Pape, L. K., and Tzagoloff, A. (1985) Mitochondrial protein synthesis is required for maintenance of intact mitochondrial genomes in *Saccharomyces cerevisiae*. *EMBO J.* **4**, 2087-2092
 43. Bonnefoy, N., and Fox, T. D. (2007) Directed alteration of *Saccharomyces cerevisiae* mitochondrial DNA by biolistic transformation and homologous recombination. *Methods Mol. Biol.* **372**, 153-166
 44. Hill, J. E., Myers, A. M., Koerner, T. J., and Tzagoloff, A. (1986) *Yeast* **2**, 163-167
 45. Rothstein, R. J. (1983) *Methods Enzymol.* **101**, 202-211
 46. Herrmann, J. M., Foelsch, H., Neupert, W., and Stuart, R. A. (1994) Isolation of yeast mitochondria and study of mitochondrial protein translation In *Cell Biology: A Laboratory Handbook*, Vol 1, JE (ed) pp. 538–544 San Diego: Academic Press.
 47. Sambrook, J., Fritsch, E. F., and Maniatis, T. (1989) *Molecular Cloning: A Laboratory Manual*. NY: Cold Spring Harbor Laboratory Press
 48. Schiestl, R. H., and Gietz, R. D. (1989) High efficiency transformation of intact yeast cells using single stranded nucleic acids as a carrier. *Curr. Genet.* **16**, 339–346

49. Laemmli, U. K. (1970) Cleavage of structural proteins during the assembly of the head of bacteriophage T4. *Nature* 227, 680–685
50. Wittig, I., Braun, H. P., and Schagger, H. (2006) Blue native PAGE. *Nat Protoc* 1, 418-428
51. Wharton, D. C., and Tzagoloff, A. (1967) Cytochrome oxidase from beef heart mitochondria. *Methods in Enzymol.* 10, 245-250
52. Lowry, O. H., Rosebrough, N. J., Farr, A. L., and Randall, R. J. (1951) Protein measurement with the Folin phenol reagent. *J. Biol. Chem.* 193, 265–275

LEGENDS TO FIGURES

Fig. 1. Properties of yeast expressing HA and HAC tagged Cox2p. **A.** Overnight cultures of the parental wild type MRS-1A, aMRS Δ COX2, aMRS/COX2-HA and aMRS/COX2-HAC were serially diluted and spotted on rich glucose (YPD) and rich glycerol/ethanol (YEPG) plates. The photograph was taken after 2 days incubation at 30°C. **B.** Mitochondria were prepared from aMRS/COX2-HA and aMRS/COX2-HAC. The indicated amounts of mitochondria were applied to a 12% polyacrylamide gel and separated by SDS-PAGE. To detect the HAC tagged protein nitrocellulose Western blots were incubated with polyclonal antibody against the protein C epitope followed by secondary peroxidase coupled antibody against rabbit γ globulin. Proteins were visualized with SuperSignal chemiluminescent substrate kit (Pierce, Rockford, IL). **C.** Protocol used to purify HAC tagged cytochrome oxidase. **D.** Two different concentration of cytochrome oxidase purified as in **C** were depolymerized in Laemmli sample buffer (43) and separated by SDS-PAGE on a 12% polyacrylamide gel. Proteins were stained with silver. The subunits of cytochrome oxidase are identified in the right hand margin. **E.** Mitochondria from the indicated strains were extracted and separated by BN-PAGE. Proteins were transferred to a PVDF membrane, reacted with a polyclonal antibody against Cox2p and further processed as in **B**. **F.** Mitochondria of the wild type strain W303-1B and MRS/COX2-HAC expressing tagged Cox2p were assayed for oxidation of ferrocytochrome *c* at 550 nm. S. A. refers to specific activity expressed as μ moles of cytochrome *c* oxidized/min/mg protein.

Fig. 2. *In organello* labeling of Cox2p intermediates. **A.** Mitochondria were isolated from respiratory competent haploid strains W303-1B and MRS/COX2-HAC. Mitochondria (250 μ g protein) were labeled *in vitro* with 35 S-methionine plus 35 S-cysteine and extracted with digitonin as described previously (10). The digitonin extract (5% of total) and the fraction purified on protein C antibody beads as in Fig. 1D (15% of total) were separated by SDS-PAGE on a 12% polyacrylamide gel, transferred to nitrocellulose and exposed to X-ray film. **B.** The fraction purified on the protein C beads was separated by BN-PAGE on a 4-13% polyacrylamide gel, transferred to a PVDF membrane and exposed to X-ray. **C.** The purified PC eluates from WT and from MRS/COX2-HAC were separated by BN-PAGE on a 4-13% polyacrylamide gel in the first dimension and by SDS-PAGE in the second dimension. The background bands detected in the autoradiogram of the WT control (2D gel of top panel) correspond to the D3 and D4 intermediates of the Cox1p module and the C3 intermediate of Cox3p module. The radiolabeled bands pulled down by Cox2p are the B1, B2 and B3 intermediates with the Cox2p precursor (p-Cox2p) the B4 intermediate and COX with mature Cox2p and the non-specific adsorbed C3 intermediate with Cox3p (2D gel of lower panel). The migration of Cox1p, Cox2p-HAC and the Cox2p precursor are marked in the margins. **D** and **E.** Same as **A** and **B**, except that MRS1^o/COX1-HAC, a strain expressing Cox1p with an HAC tag was used for comparison. The Western blot of the native gel in the right panel was exposed 3 times longer.

Fig. 3. Effect of 2 hours growth in the presence of chloramphenicol on translation of cytochrome *b*. **A.** Mitochondria were isolated from the WT strain W303-1B and MRS/COX2-HAC, a strain expressing Cox2p-HAC grown to early stationary phase in rich galactose (YPGal) medium without (-CAP) and with an additional 2 hour growth in YPGal containing 2 mg/ml

chloramphenicol (+CAP). Mitochondria labeled for 20 min with ^{35}S -methionine plus ^{35}S -cysteine, were extracted with digitonin and Cox2p-HAC purified on protein C antibody beads as described under Materials and Methods. The digitonin extracts and purified fraction from the beads (PC eluates) were separated by SDS-PAGE (43) on a 17% polyacrylamide gel, transferred to nitrocellulose and exposed to an X-ray film. The radiolabeled mitochondrial gene products are identified in the margin. The migrations of Var1p relative to Cox1p and of Cox2p relative to cytochrome *b* are reversed at 17% compared to 12% acrylamide. The small insert panel of the PC eluates has been expanded to better show the separation of cytochrome *b* and Cox2p-HAC. **B.** The PC eluates of **A** were separated by BN-PAGE on a 4-13% polyacrylamide gel, transferred to a PVDF membrane and exposed to X-ray film. The bands corresponding to the supercomplexes, COX and Cox2p intermediates are marked in the margin. **C.** The PC eluates of **A** were first separated by BN-PAGE as in **B** and by SDS-PAGE on a 12% polyacrylamide gel in the second dimension. The large area of radioactivity near the right edge of the lower gel is an artifact.

Fig. 4. Pulse-chase analysis of mitochondria expressing Cox2p-HAC. **A.** Mitochondria of MRS/COX2-HAC that had been grown on YPGal with a subsequent incubation in the presence of chloramphenicol were labeled with ^{35}S -methionine plus ^{35}S -cysteine for 5 min. Translation was terminated by addition of puromycin and cold methionine and chased by further incubation for the indicated times. Mitochondria sampled at each time point were extracted with digitonin and Cox2p-HAC purified on protein C antibody beads (PC eluates). The digitonin extracts and PC eluates were separated by SDS-PAGE on a 12% polyacrylamide gel, transferred to nitrocellulose and exposed to X-ray. **B.** The PC eluates from **A** were separated BN-PAGE on a 4-13% polyacrylamide gel, transferred to a PVDF membrane and exposed to X-ray film. **C.** Radiolabeled Cox2p-HAC and cytochrome *b* on the Western blot of **A** were quantified with a phosphorimager. **D.** The band of **B** corresponding to the radiolabeled supercomplexes, COX plus intermediates B4, B3, and B1 plus B2 were quantified with a phosphorimager.

Fig. 5. Pull-down assays of radiolabeled mitochondrial gene products of strains expressing Cox12p-HAC, Cox13p-HAC and Pet100p-CH. **A** and **B.** The parental wild type and strains expressing Cox2p-HAC and Cox13p-HAC with and without an *mss51* null mutation were grown in YPGal medium and incubated for an additional 2 hours in fresh YPGal containing 2 mg/ml chloramphenicol. Mitochondria were labeled for 20 min and the tagged proteins purified on protein C beads as in Fig. 3A. The fractions purified on protein C antibody beads were separated on a 12% polyacrylamide gel by SDS-PAGE (**A**) and on a 4-13% polyacrylamide gel by BN-PAGE (**B**). Following transfer to nitrocellulose (**A**) or PVD (**B**), the membranes were exposed to an X-ray film. The positions of the radiolabeled mitochondrial products and assembly intermediates are marked in the margins of the autoradiograms. **C** and **D.** Yeast strains expressing Cox12p-HAC were analyzed as in **A** and **B.** **E** and **F.** Yeast strains expressing Pet100p-CH were analyzed as in **A** and **B.** In **D**, the in-gel COX activity was measured as described previously (10).

Fig. 6. Cox18p and Cox20p are components of the Cox2p module. **A.** The parental wild type the *cox18* and *cox20* null mutants and the null mutants expressing HAC tagged Cox18p and Cox20p were serially diluted and spotted on rich glucose (YPD) and rich ethanol plus glycerol (YEPG).

The plates were incubated for 2 days at 30°C. **B.** Mitochondria of the wild type and the strains expressing HAC tagged Cox1p (MRS1^O/COX1-HAC), Cox18p (W303/COX18-HAC), and Cox20p (W303/COX20-HAC) were grown in YPGal without additional growth in medium containing chloramphenicol. Mitochondria were prepared and labeled as in **3A**. The digitonin extracts and eluates from the protein C antibody beads (PC eluates) were separated by SDS-PAGE on a 12% polyacrylamide gel. **C.** The fractions of **B** eluted from the PC beads were separated by BN-PAGE on a 4-13% polyacrylamide gel, transferred to a PVD membrane and exposed to X-ray. **D.** Same as **C** except that the gel was stained for COX activity.

Fig. 7. Association of Sco1p and Coa6p with Cox2p. **A.** The different strains were grown to early stationary phase in 2% YPGal with a final 2 hour growth in the presence of 2 mg/ml chloramphenicol. Mitochondria were labeled for 20 min and fractionated as in **Fig. 2A**. The digitonin extracts and eluates from the protein C antibody beads were separated by SDS-PAGE on a 12% polyacrylamide gel containing 6M urea and 10% by weight glycerol. **B.** An enlargement of the Cox2p and cytochrome *b* region of the gel shown in **A**. **C.** The different strains of yeast were grown and mitochondria were labeled, fractionated and the digitonin extracts and eluates from the protein C antibody beads electrophoresed as in **A**. **D.** An enlargement of the Cox2p and cytochrome *b* region of the gel shown in **C**. **E.** The indicated strains were grown and mitochondrial were labeled, fractionated and the digitonin extracts electrophoresed as in **A**. **F.** The digitonin extracts of **E** were purified on protein C antibody beads and separated by BN-PAGE on a 4-13% polyacrylamide gel.

Fig. 8. The three cytochrome oxidase modules. The structural subunits and ancillary assembly factors present in each module are shown.

Fig. 1 Franco et al

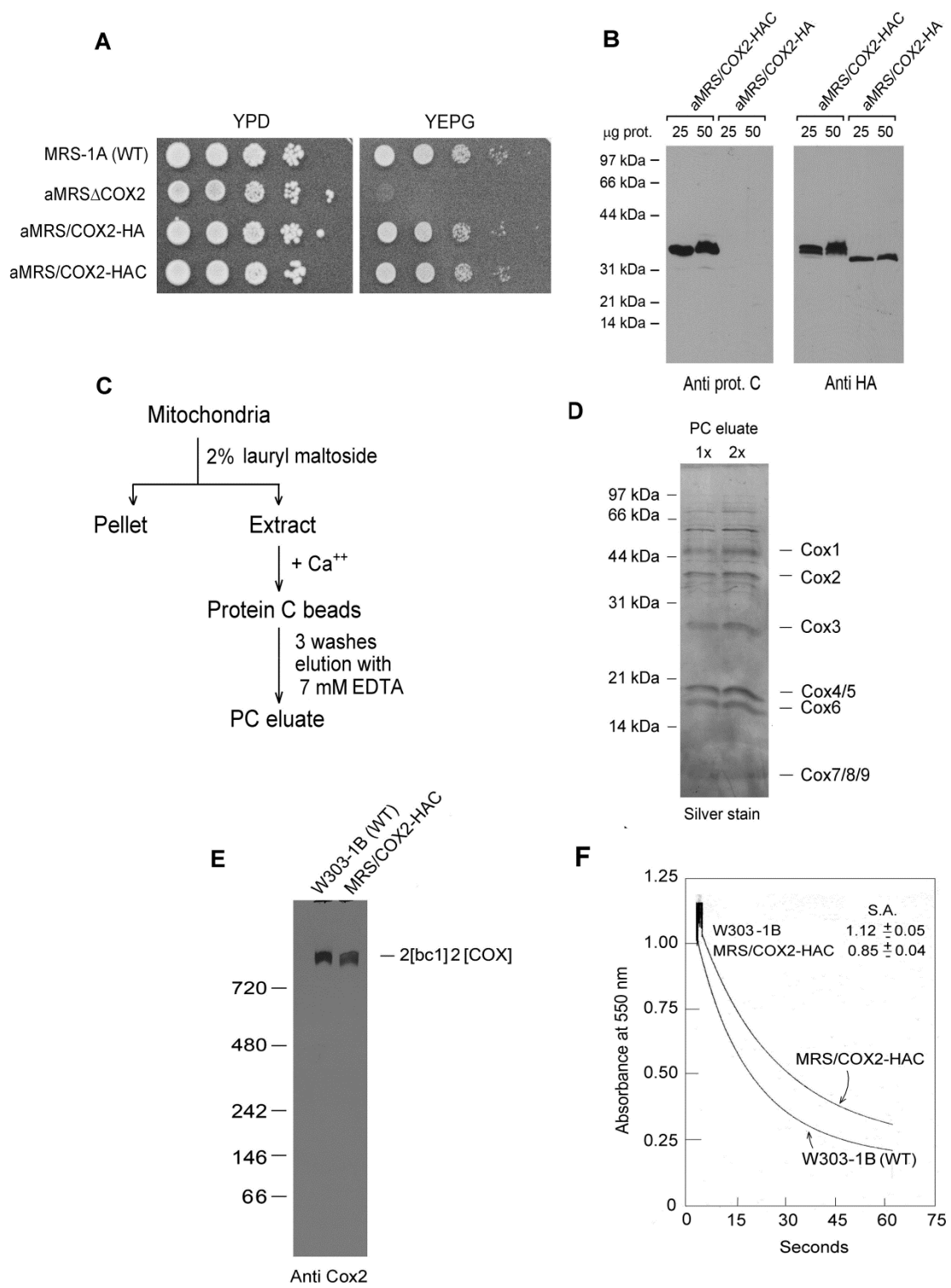


Fig. 2, Franco et al

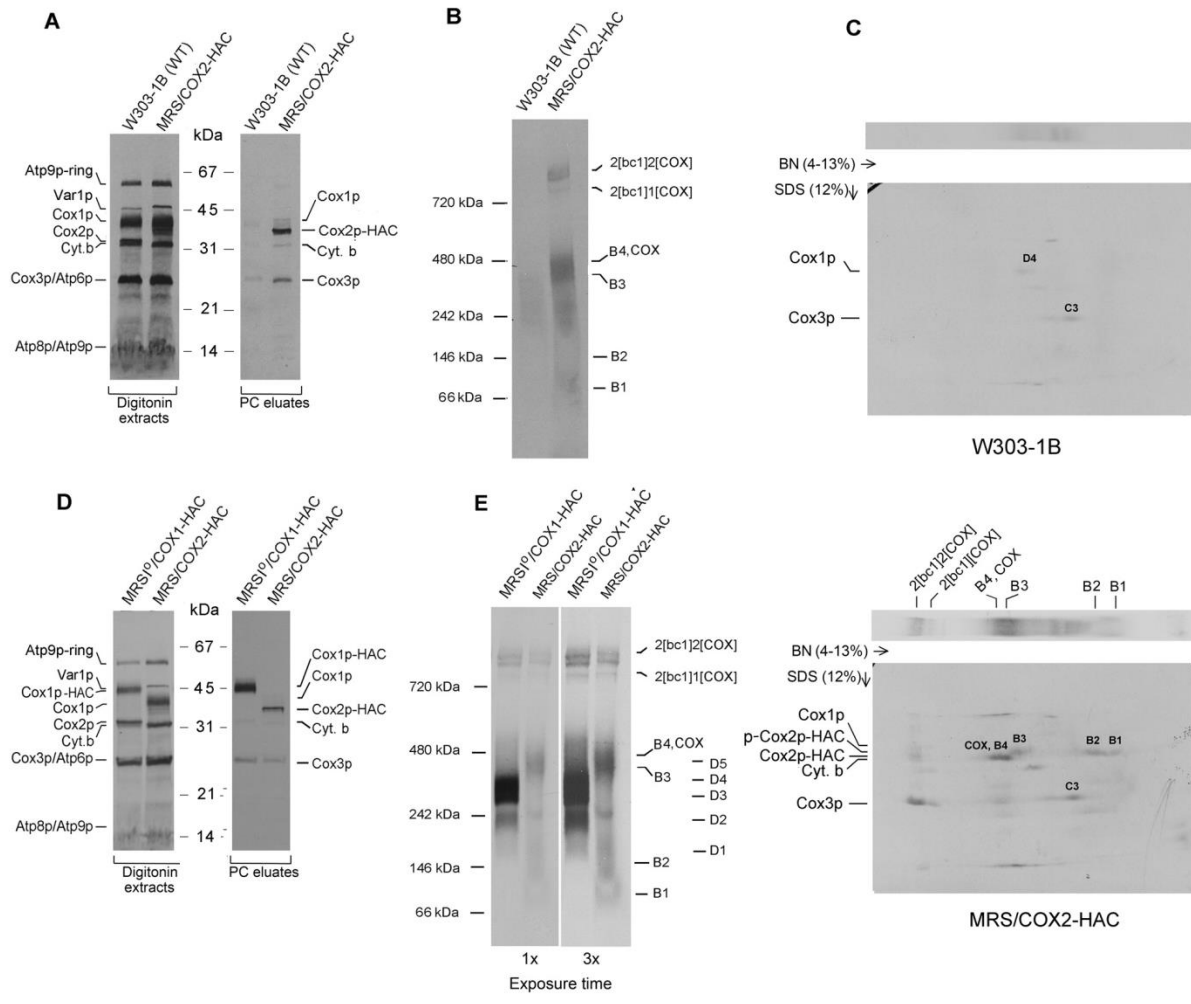


Fig. 3 , Franco et al

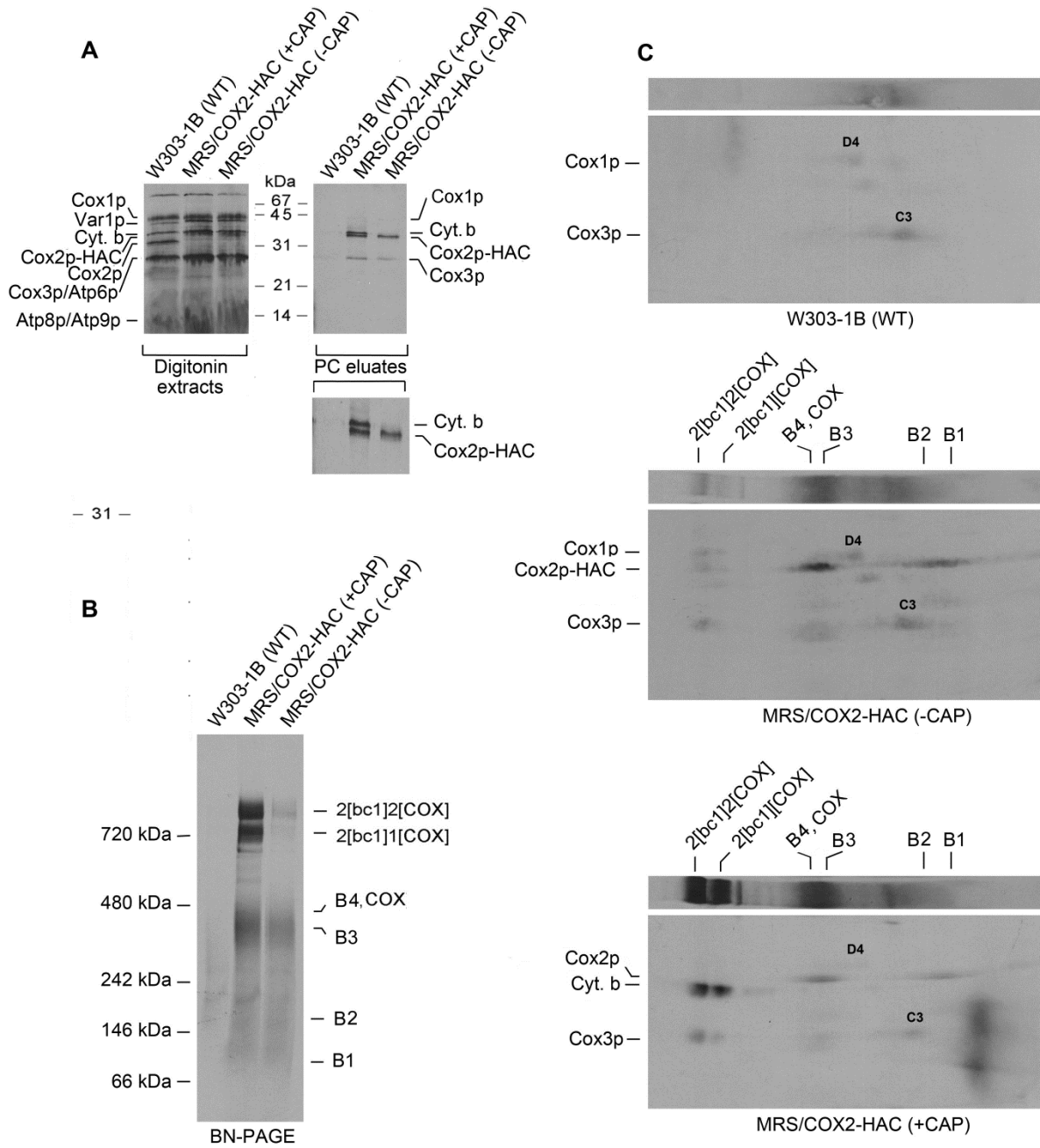


Fig. 4, Franco et al

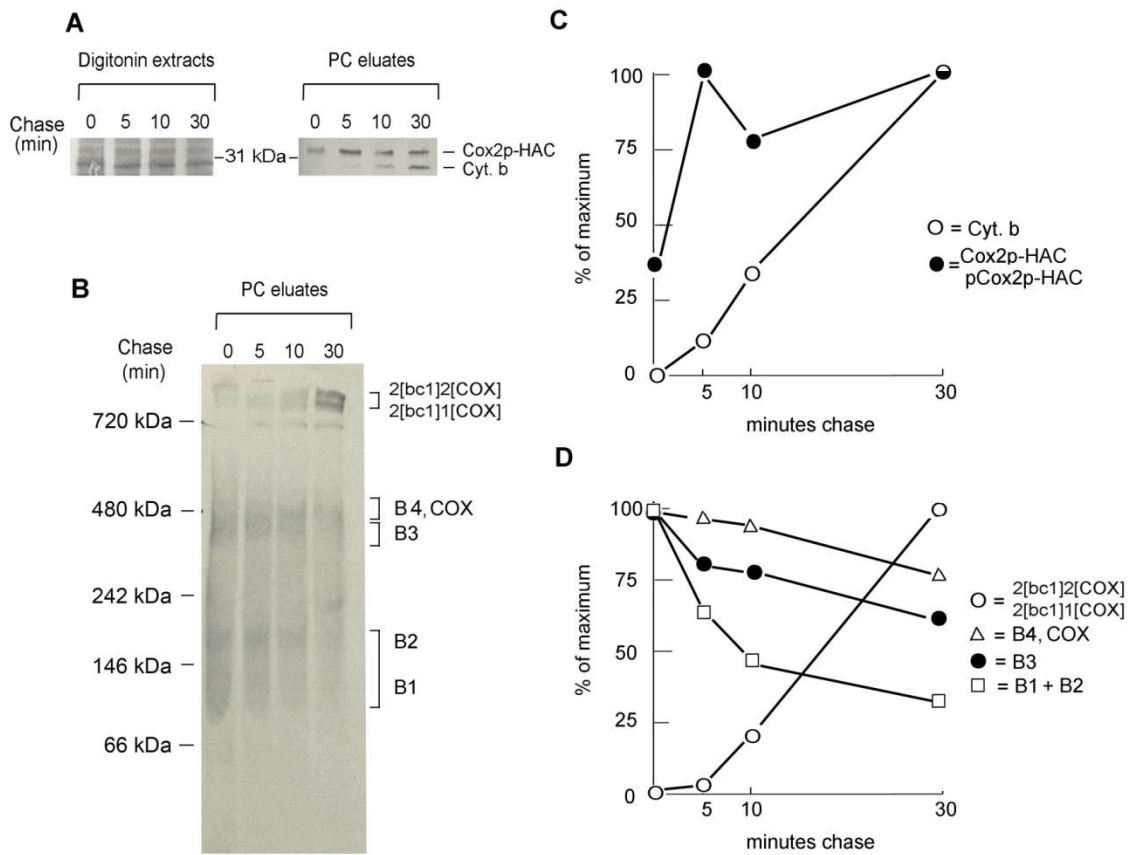


Fig. 5, Franco et al

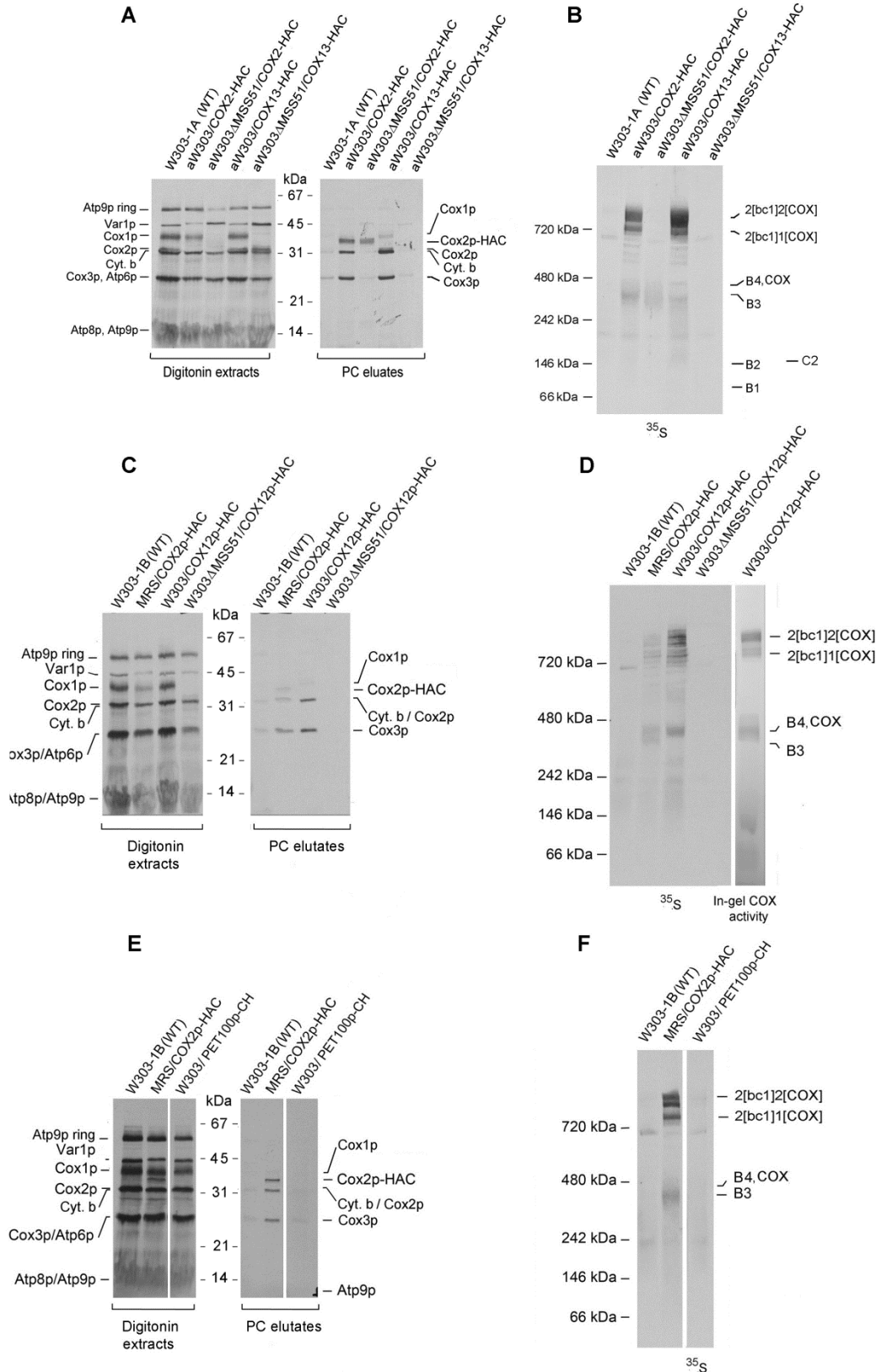


Fig. 6, Franco et al

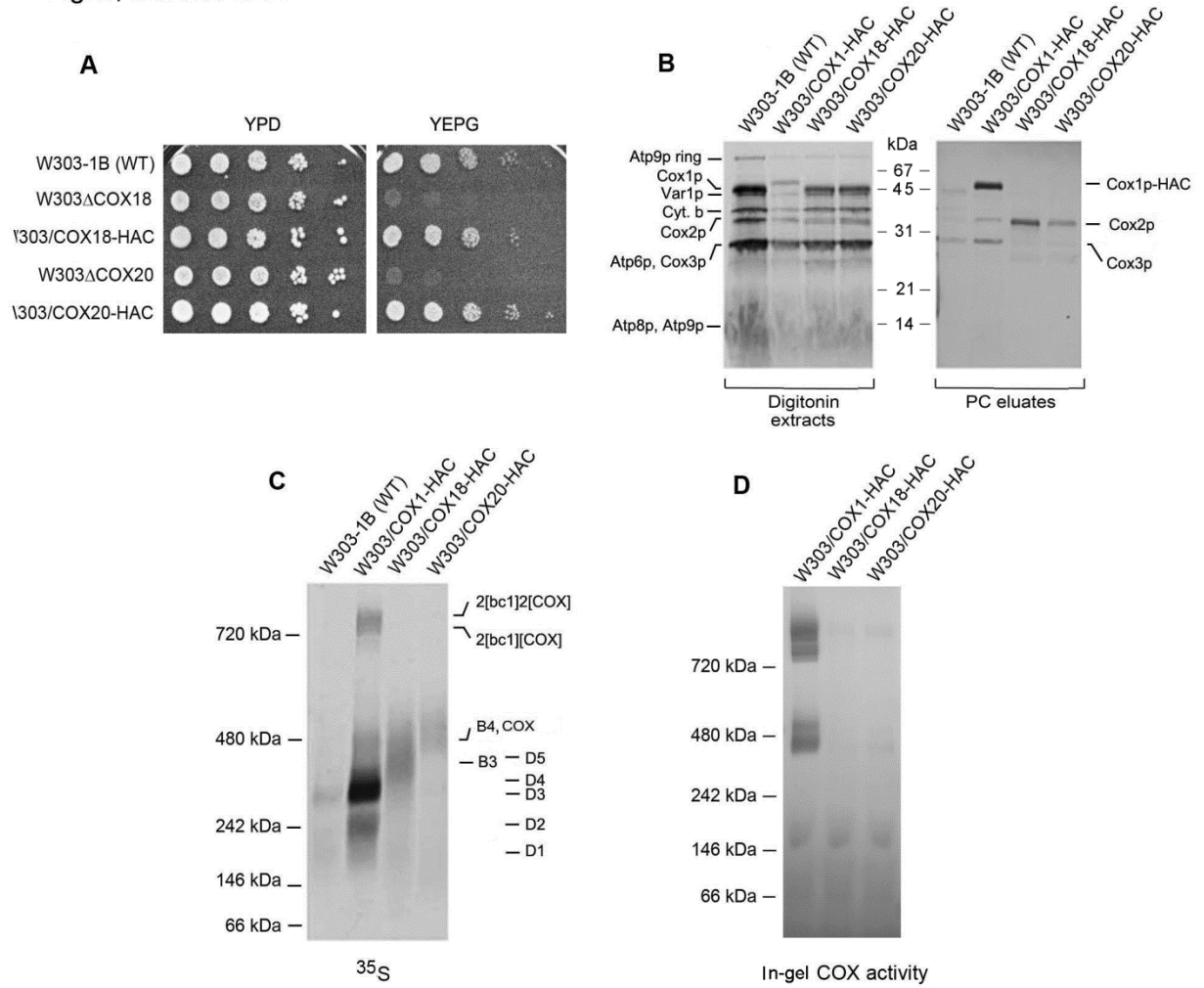


Fig. 7, Franco et al

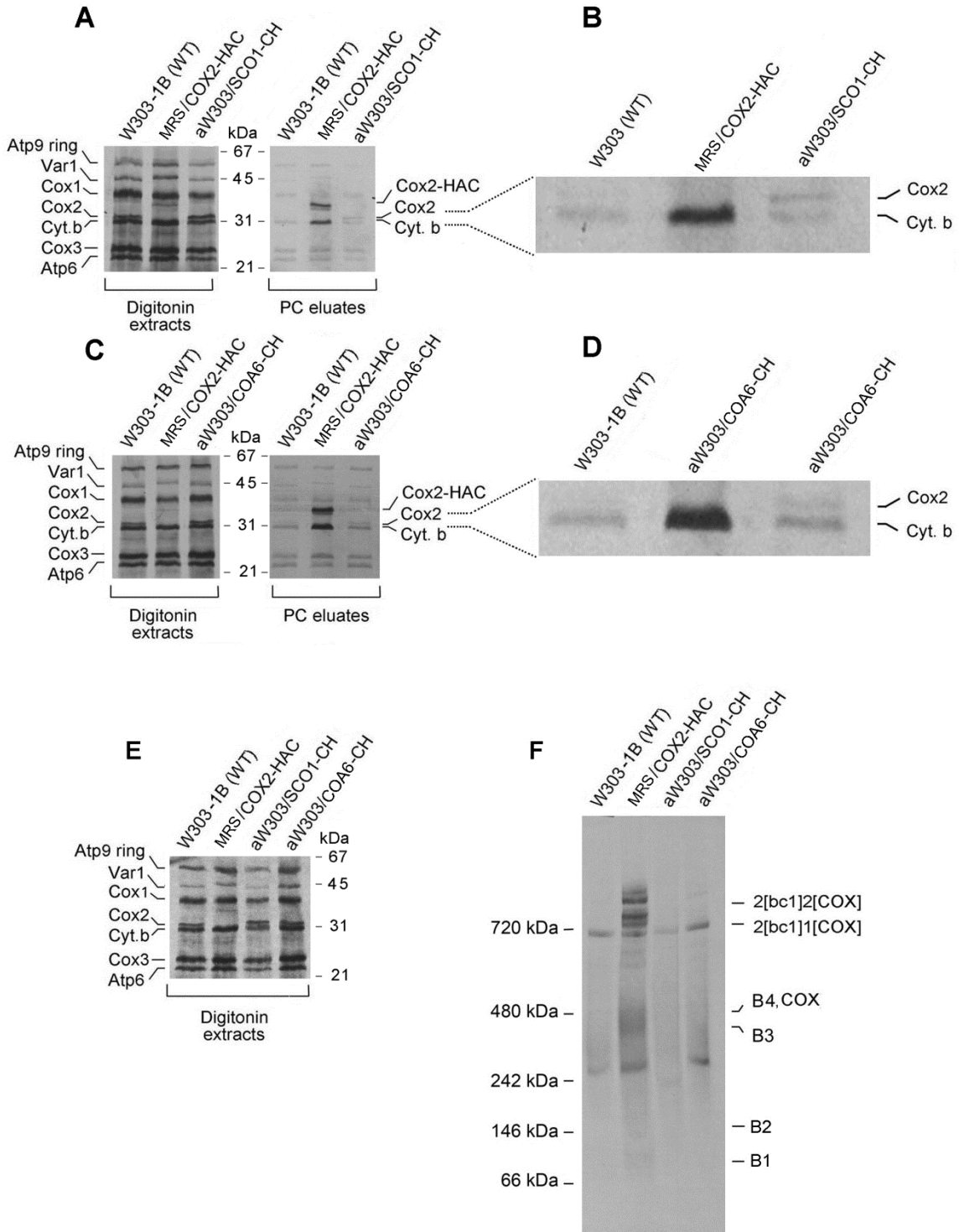
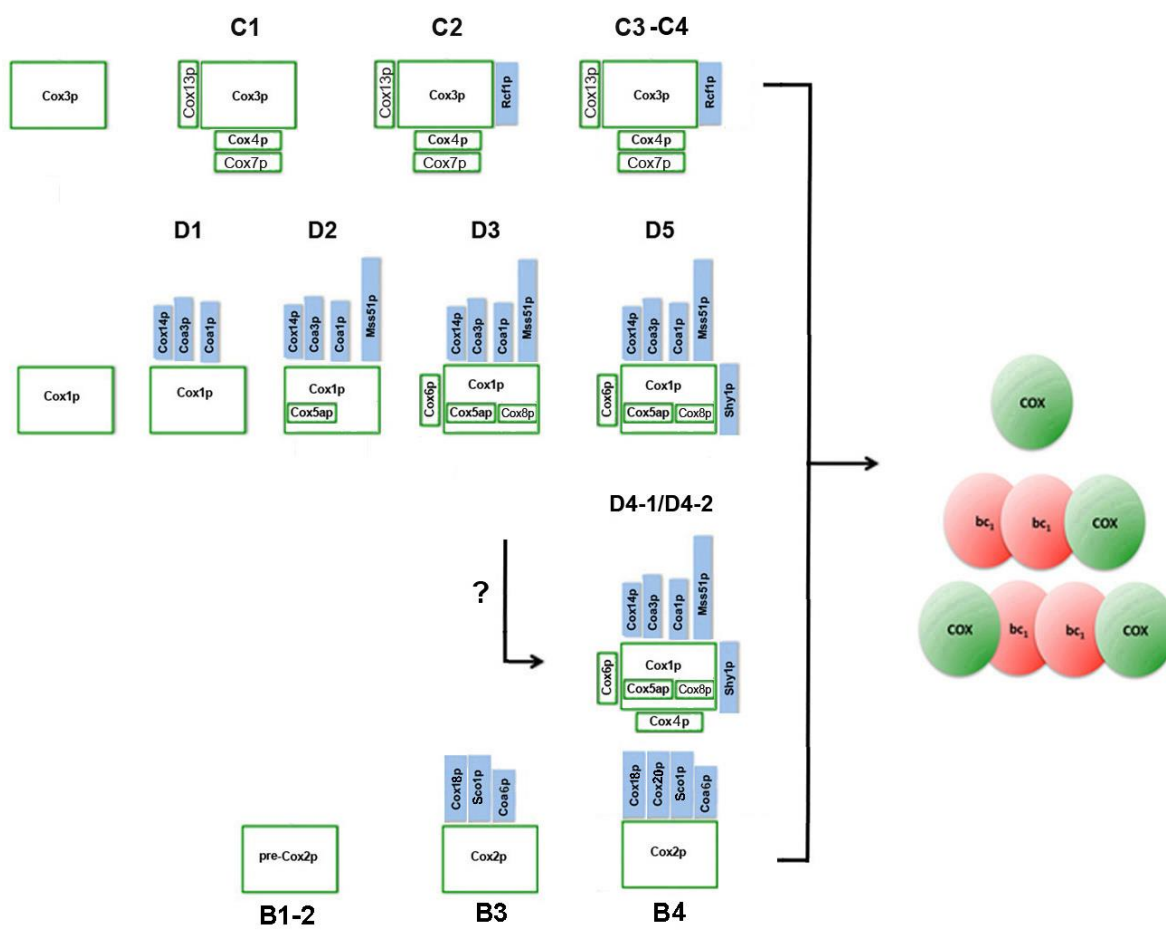


Fig. 8, Franco et al



Cox2p of yeast cytochrome oxidase assembles as a stand-alone subunit with the Cox1p and Cox3p modules.

Leticia Veloso R. Franco, Chen Hsien Su, Gavin P. McStay, George J. Yu and Alexander Tzagoloff

J. Biol. Chem. published online September 17, 2018

Access the most updated version of this article at doi: [10.1074/jbc.RA118.004138](https://doi.org/10.1074/jbc.RA118.004138)

Alerts:

- [When this article is cited](#)
- [When a correction for this article is posted](#)

[Click here](#) to choose from all of JBC's e-mail alerts