

This website uses cookies to enhance your user experience. By continuing to browse the site you are agreeing to our use of cookies. [Find out more here](#)

OK



Study and courses

Life at NTU

International

About NTU

Research

Business and employers

Jobs



Course search

Open days

Undergraduate

Postgraduate

College courses

Degree Apprenticeships

Online learning

More study options

Starting at NTU



## Seminars

In this seminar from the School of Art & Design, artist Neil Brownsword examines the ceramic manufacturing histories and legacy of deindustrialisation in his native Stoke-on-Trent. Brownsword articulates a critique of globalization and its socio-economic impact on people, place and traditional industry.

**From:** Thursday 19 April 2018, 12 pm

**To:** Thursday 19 April 2018, 2 pm

**Location:** CHR2702, Nottingham Trent University, 50 Shakespeare Street, Nottingham NG1 4FQ,

Past event

## Event details

## Abstract

Artist Neil Brownsword examines the ceramic manufacturing histories and legacy of deindustrialisation in his native Stoke-on-Trent - a world renowned ceramic capital that has undergone significant change in recent decades. Using a research process which involves film, installation and performance, Brownsword articulates a critique of globalization and its socio-economic impact on people, place and traditional industry. He highlights in particular complex knowledge systems within ceramic manufacture, and their displacement through advanced technology and policies of outsourcing. Through this presentation, Brownsword reveals often overlooked forms of human intelligence within a rapidly disappearing culture of labour, and raises questions surrounding the relevance and sustainability industrial craft skills that remain an important aspect of Britain's intangible cultural heritage.

## Biography

Neil Brownsword is an artist, researcher and educator who holds Professorial positions at Bucks New University and University of Bergen, Norway. In 2009, he was awarded the inaugural British Ceramic Biennial Award, and the prestigious Grand Prize at the Gyeonggi International Ceramic Biennale, South Korea in 2015. His work is represented in public/private collections internationally, including the Victoria and Albert Museum, Korea Ceramic Foundation, Yingee Ceramic Museum Taiwan and Fu Le International Ceramic Art Museum China.

## Further Information

The seminar will be hosted by Pip Spoerry, Head of Visual Arts, in the Chaucer Building, room CHR2702


- 12:00 - Refreshments
- 12:30 - Seminar begins
- 13:30 - Questions and discussion

Attendance at this event is free. For any queries, please contact [Dr Iryna Kuksa](#)

**Photo Credit:** Factory, with Rita Floyd, performative installation, British Ceramics Biennial 2017 - Courtesy of BCB 2017 and Joel C. Fildes

## Location details

52°57'27.8"N 1°09'17.3"W

  
Directions

  
Save

 Sign in

[View larger map](#)



Google

Map [Report a map error](#)

**Address:**

Nottingham Trent University  
50 Shakespeare Street  
Nottingham NG1 4FQ

Past event

## Share this page



## Still need help?

+44 (0)115 941 8418

## Related events

JUN

03

EVENT

### Sustainability induction for NTU Staff (City)

Networking | Seminars

**3 June 2019**

12.30 pm - 1 pm

An introduction from NTU's Sustainable Development Team for new staff.

[ntu.ac.uk/about-us/events/events/2019/06/sustainability-induction-for-ntu-staff-city2](https://ntu.ac.uk/about-us/events/events/2019/06/sustainability-induction-for-ntu-staff-city2)

JUN

05

EVENT

## Sustainability Induction for NTU Staff (Clifton)

Networking | Seminars

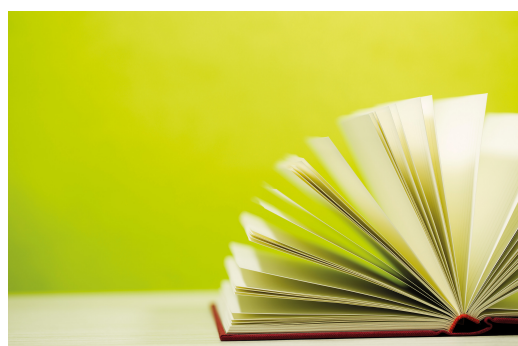
**5 June 2019 - 5 July 2019**

11.30 am - 12 am

An introduction from NTU's Sustainable Development Team for new staff.

[ntu.ac.uk/about-us/events/events/2019/06/sustainability-induction-for-ntu-staff-clifton](http://ntu.ac.uk/about-us/events/events/2019/06/sustainability-induction-for-ntu-staff-clifton)

Reserve your place



EVENT

## SHAPE Research Seminar Series

**The concussion crisis in sport**

Seminars

**5 June 2019**

1 pm - 2 pm

As part of the School of Science and Technology SHAPE Research Centre Seminar Series, Dr Dominic Malcolm, Loughborough University presents: The concussion crisis in sport.

[ntu.ac.uk/about-us/events/events/2019/06/shape-research-seminar-series](http://ntu.ac.uk/about-us/events/events/2019/06/shape-research-seminar-series)

[View all related events](#) >

# Our reputation

We're nationally recognised for outstanding teaching, research, engagement with employers and student satisfaction. [See all our awards](#)

**University  
of the Year  
2019**

The Guardian  
University Awards 2019

**WINNER**  
**UNIVERSITY  
OF THE YEAR**

**THE AWARDS**  
2017



## Main reception

Lines are closed:

+44 (0)115 941 8418

Monday – Thursday 8.30 am – 5 pm

Friday 8.30 am – 4.30 pm

## General enquiries

[Find a person or service](#)

[Order a prospectus](#)

## Campus information

### City Campus

Nottingham Trent University  
50 Shakespeare Street  
Nottingham

[NG1 4FQ](#)

### Clifton Campus

[NG11 8NS](#)

### Brackenhurst Campus

[NG25 0QF](#)

## Useful links

[Current students](#)

[NOW](#)

[Staff](#)

[Alumni](#)

[University calendar](#)

[Student support](#)

[Library](#)

[Student opportunities](#)

[NTU Smartcard](#)

[Curated & Created](#)

## NTU policies

[Privacy](#)

[About our website](#)

[Freedom of information](#)

[Student Terms and Conditions](#)

