



ABOUT ME:

Stoke on Trent based artist and Associate Professor of Fine Art and Social Practice at Staffordshire University

Collaborate with Rebecca Davies, Alice Thatcher and The Community of Portland St, SOT.

www.theportlandinnproject.com



The Portland Inn Project, Inc.
Architectural Model
© 2010

So, 100 years...

The context that the project grew from....

April 2021 : Lockdown seeds....something to nurture...



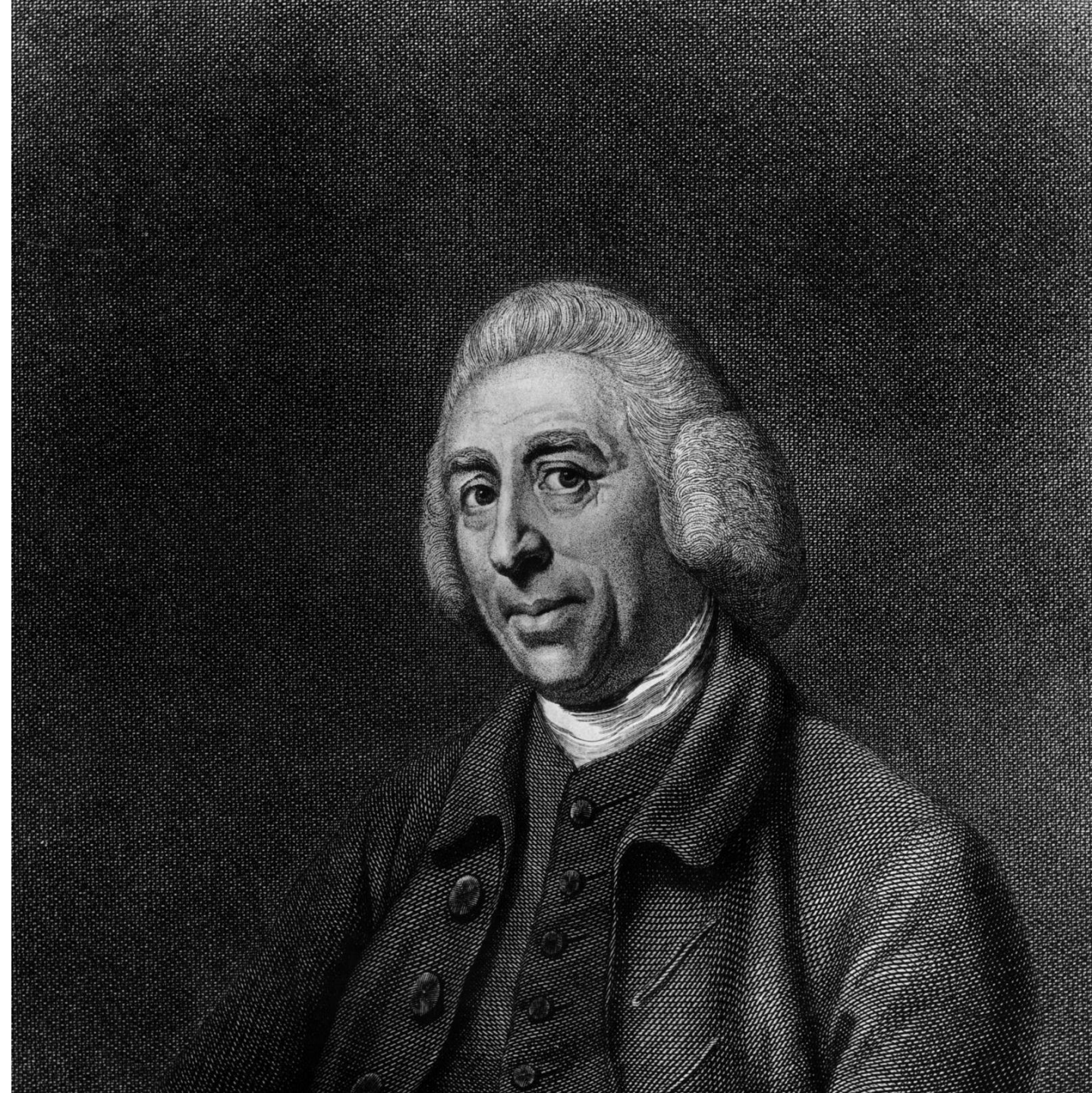


This is Andrea Ku from B4Biodiversity. We began a project in March this year that sought to support residents wanting to know more about planting in their yard, and importantly learn about the long term impacts of small contributions made today, on our ecology long term. Part of this learning was to begin creating an ecology report for the neighbourhood – A part of a 100 year plan for the neighbourhood.

Historic context of a 100 year plan:

Capability
Brown

1716-1783







- Annuals: Busy Lizzie.



- Perennials: Mint



- Nasturtiums



the ACORN.



the oak tree

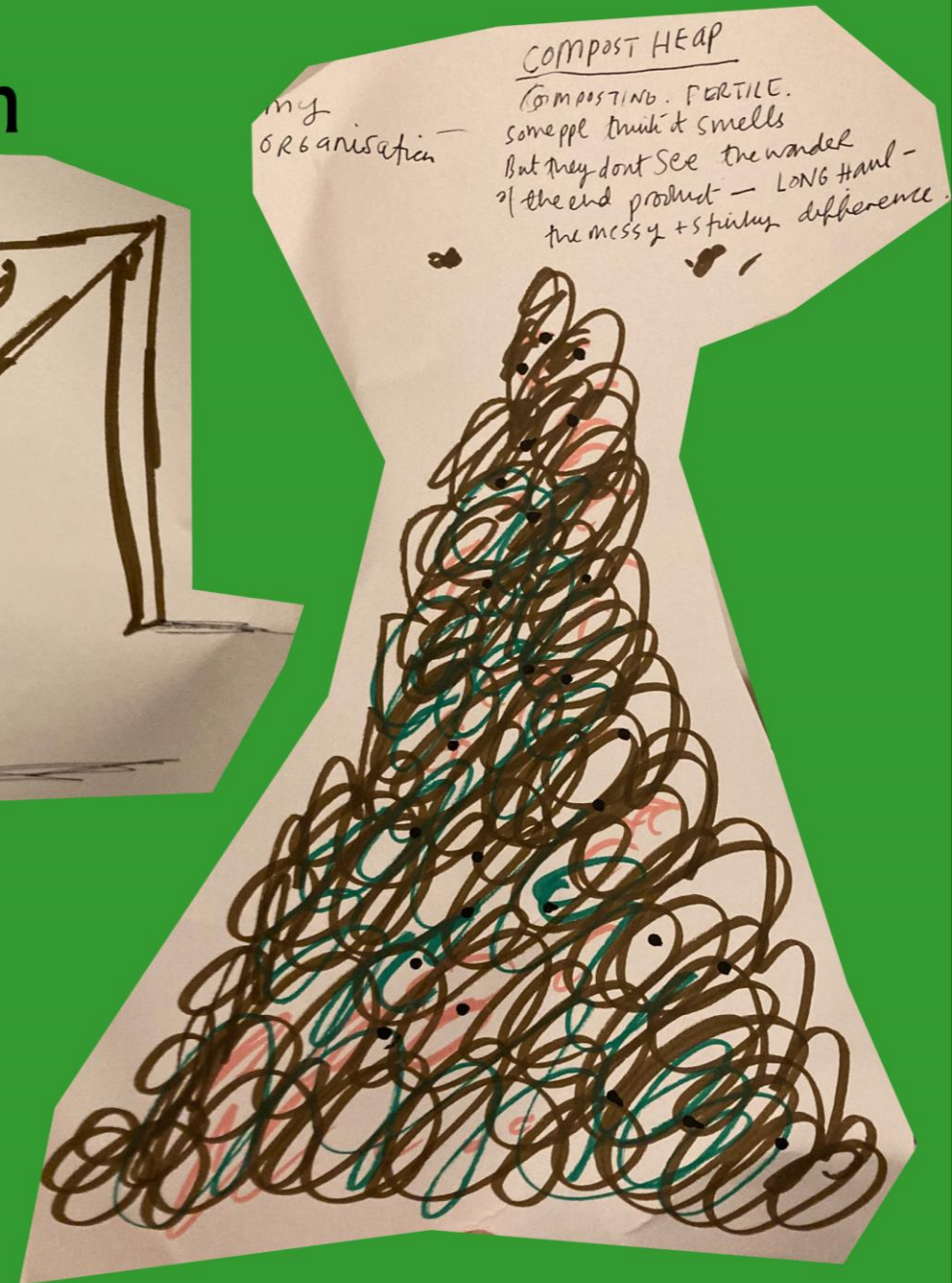
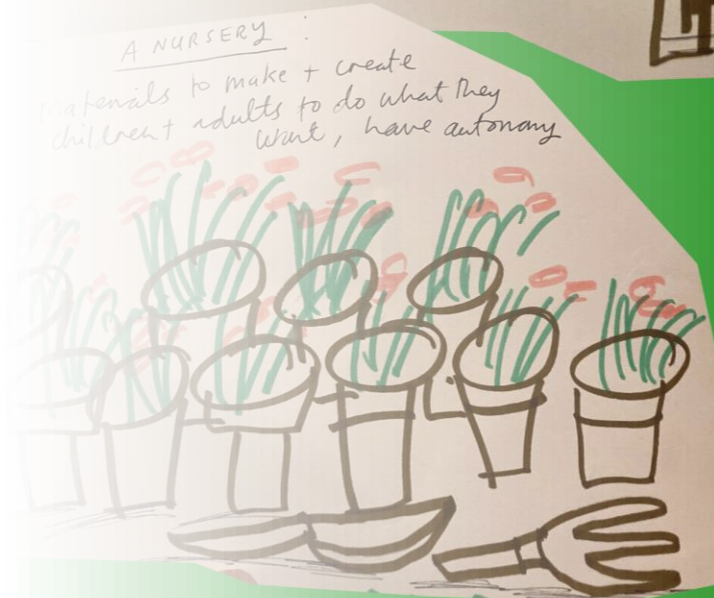
- Dreaming long term lifts us out of a daily grind/urgencies and emergencies and allows us to think about legacy of long term projects...so helpful after the difficulties of COVID
- For us, the acorns are important but we are also thinking about the oak trees



- Representing the small details, but also attending to the wider landscape:
- Using the notion of the garden as a way of thinking about how we develop and fund projects longer term is a useful exercise, and one we shared at the CCC Learning Event a couple of weeks ago.
- A couple of interesting features of our CCC Gardens included:

100 Year Garden

- A Compost Heap: composting = fertile but some people think it's ugly and it smells, they don't see the wonder at the end, and what can be grown, they just see the messy smelly process



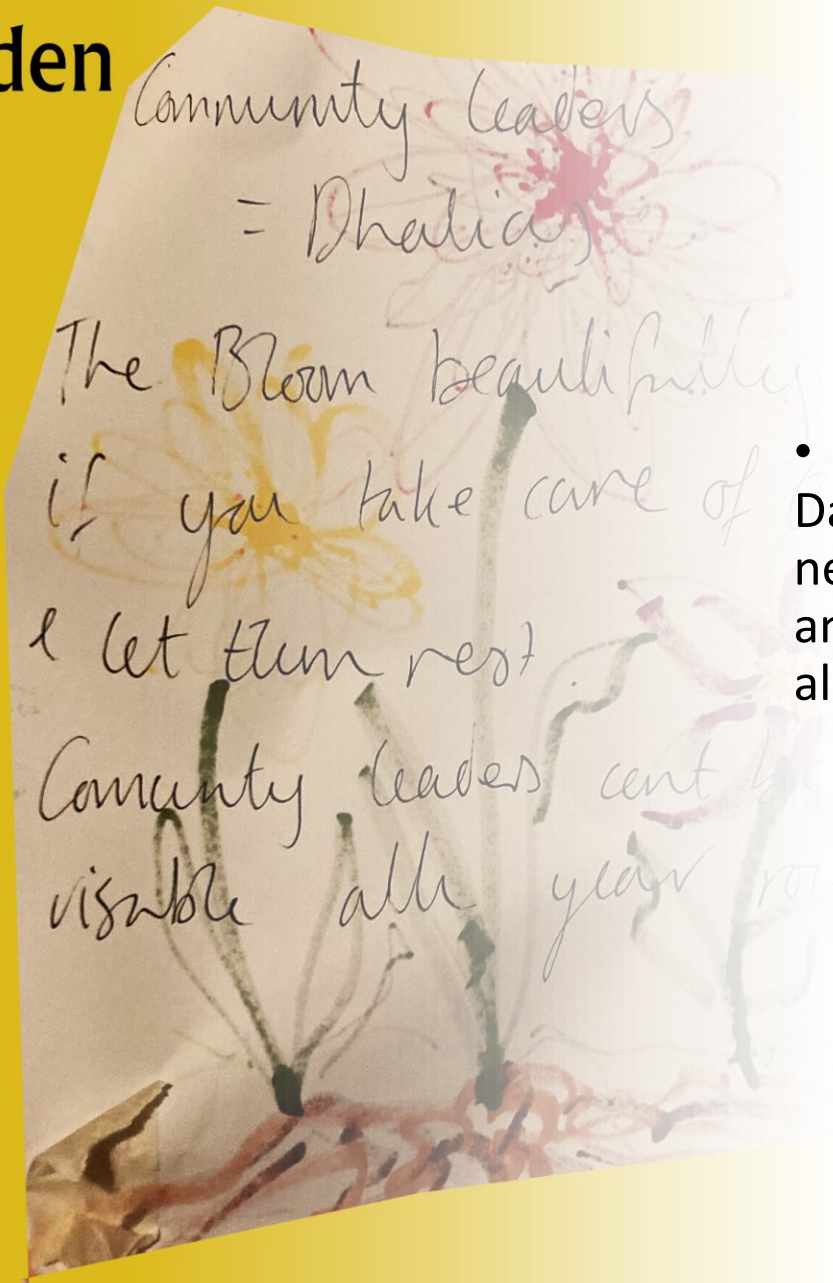


Hollyhocks
Gladioli - Perennials

Such a big show and
worth waiting for
but need keeping safe,
staking etc to make the
real magic happen.

Also gather the seeds
while you can for
next year!!

100 Year Garden



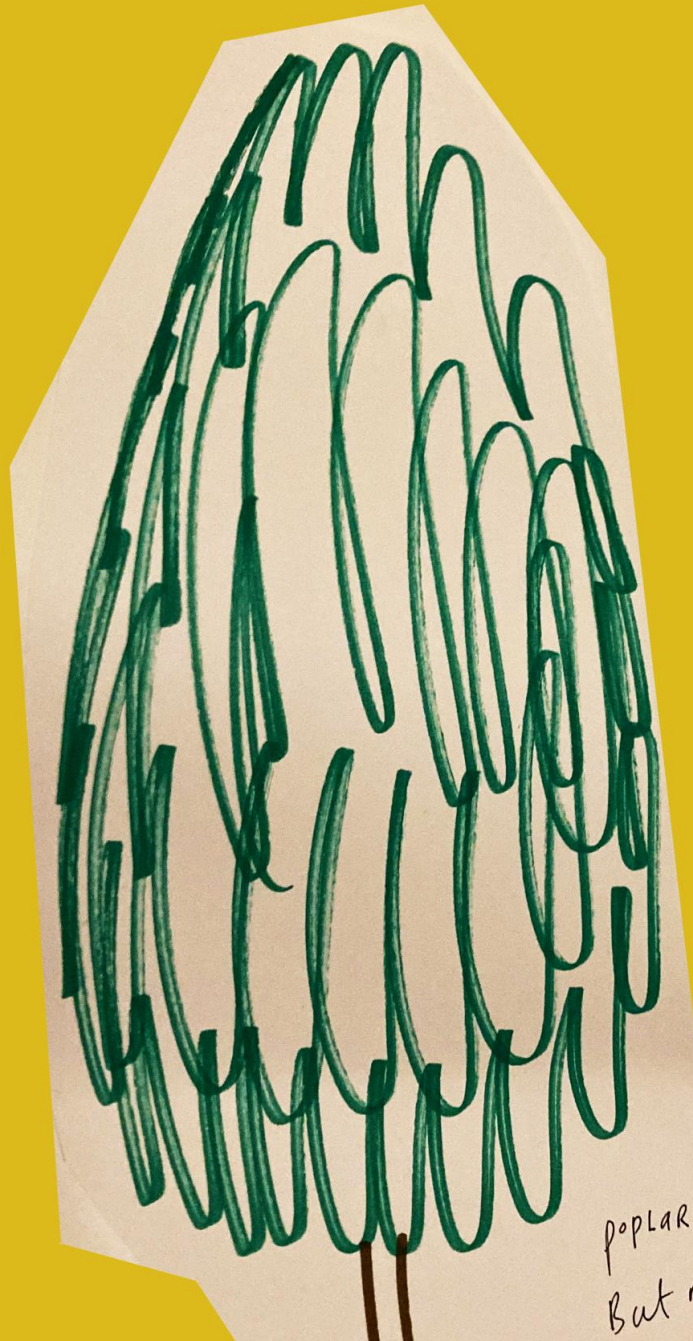
- Community Leaders: Like Dahlias, bloom beautifully but need to be taken care of, lift them and let them rest – can't be visible all the time.

We are working on the creation of an 'Influencing Tool' which takes the form of The 100 Year Plan – and works with communities, councils, policy makers and funders to define what methods and formats work best for communicating out tools like this.

We need more points of interaction to share experience and practice so that those that experience the fallout of decision makers can speak directly about what that experience looks and feels like.

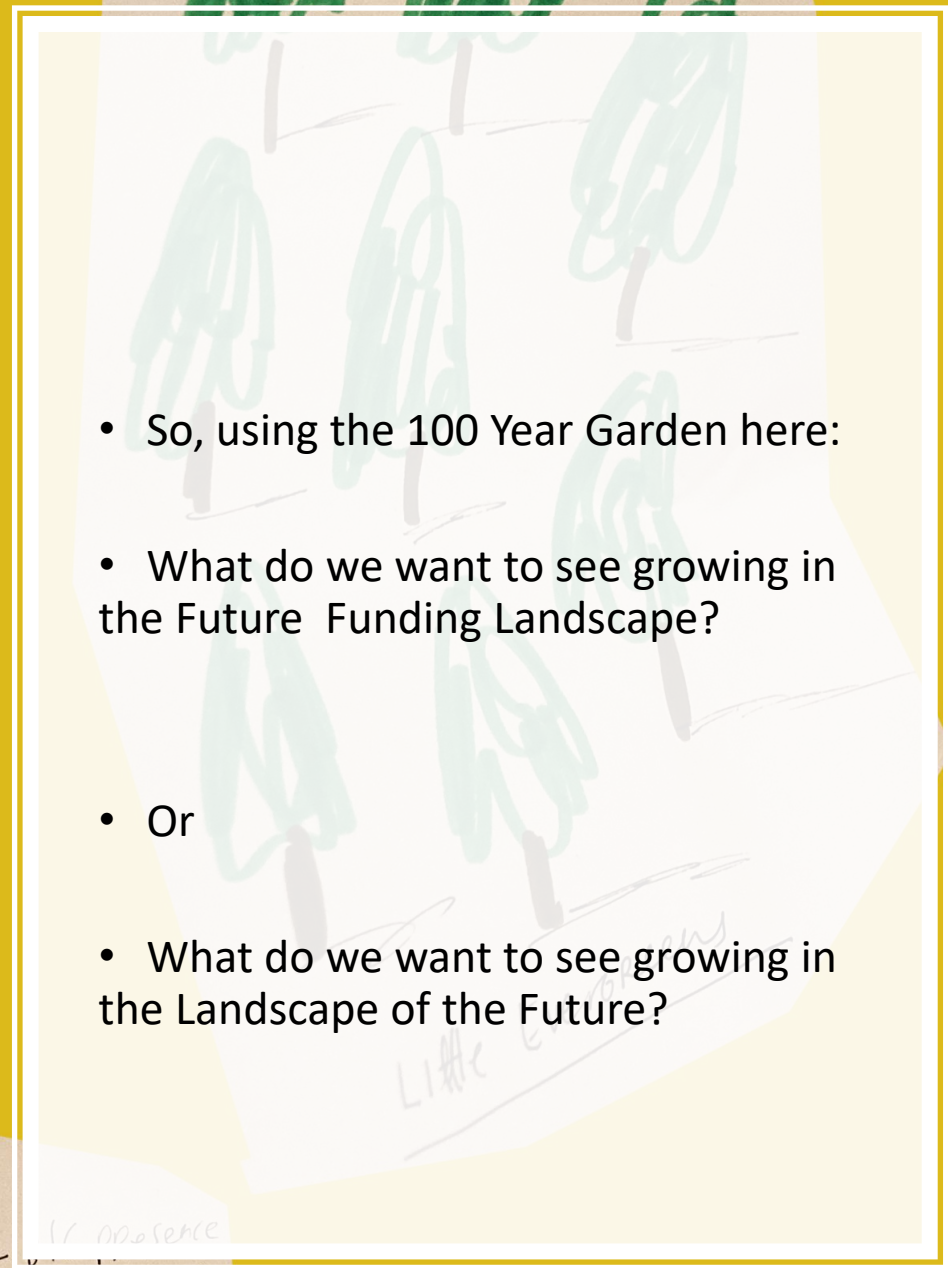


NG
owers
who
-PRISE
(US)



poplars -
But no help / actually
Resistant

- So, using the 100 Year Garden here:
- What do we want to see growing in the Future Funding Landscape?
- Or
- What do we want to see growing in the Landscape of the Future?



Little