



Historic context curated from the collections of PMAG, Wedgwood Collection at the V&A, Spode Museum Trust and Brampton Museum.



### **Alchemy and Metamorphosis – historic context. Objects curated from the Potteries Museum and Art Gallery’s reserve and archaeology collections**

Four cases mapped out an historic timeline from 1660 – 1800 to reveal a transition of styles, technologies and influences fundamental to early ceramic industrialisation. The cases re-connect complexities of knowledge embodied within archaeological remnants and wasters that illuminate methods of placing and firing, alongside manufactured products. The failed residues of early production serve as a reminder of the tenacity of early potters in the pursuit of perfection. The aim also was to reconnect new audiences with largely obscure regional histories and pioneer potters, fundamental to the development of North Staffordshire's ceramic industry.





## Alchemy and Metamorphosis – historic context. Objects curated from the Potteries Museum and Art Gallery's reserve and archaeology collections

Four cases mapped out an historic timeline from 1660 – 1800 to reveal a transition of styles, technologies and influences fundamental to early ceramic industrialisation. The cases re-connect complexities of knowledge embodied within archaeological remnants and wasters that illuminate methods of placing and firing, alongside manufactured products. The failed residues of early production serve as a reminder of the tenacity of early potters in the pursuit of perfection. The aim also was to reconnect new audiences with largely obscure regional histories and pioneer potters, fundamental to the development of North Staffordshire's ceramic industry.

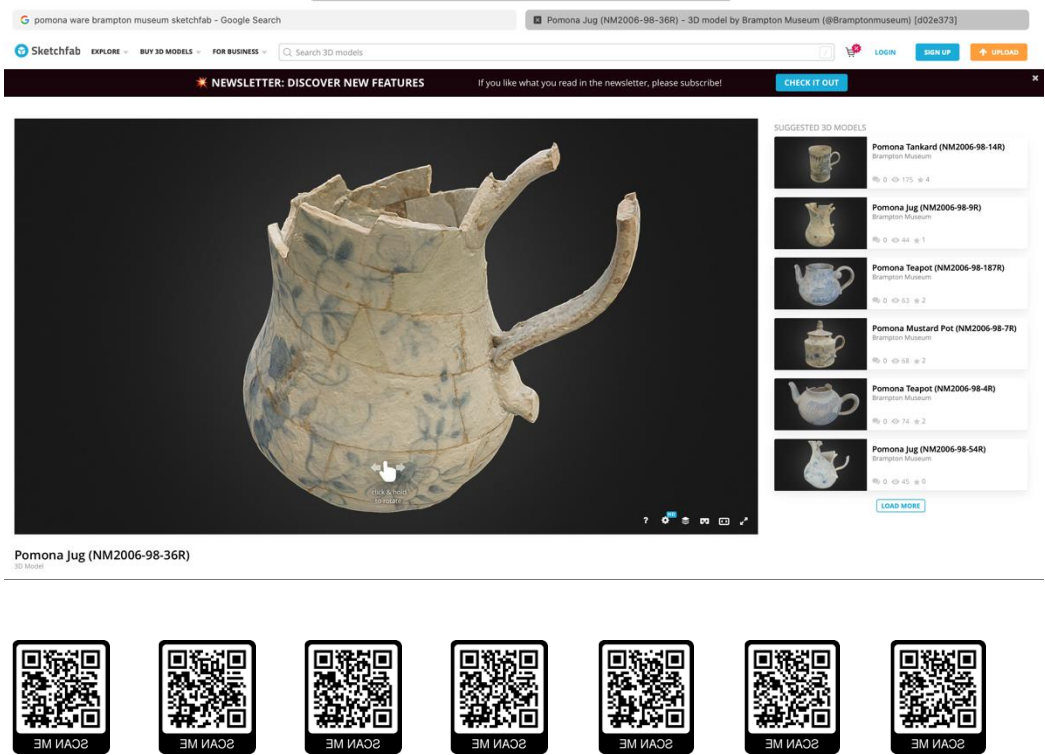


Historic technologies in the production of 18<sup>th</sup> century ceramics curated from the collections of PMAG,.



Use of digital technology to disseminate heritage objects to new audiences through QR codes. Digital models provide virtual scrutiny. All digital assets from the project will be given to the Brompton Museum and Art Galley as a mode of interpretation for their new gallery.

PLEASE CLICK LINKS



<https://sketchfab.com/3d-models/pomona-jug-nm2006-98-9r-0b47c6b1cff14a6a8f2588c52268fb6e>  
<https://sketchfab.com/3d-models/pomona-tankard-nm2006-98-14r-eff50772052a4485bfd6ce24f0de7003>  
<https://sketchfab.com/3d-models/pomona-teapot-nm2006-98-187r-470482960fc94835bff599f49c30868c>  
<https://sketchfab.com/3d-models/pomona-teapot-nm2006-98-4r-b333d6ef10024a80b1b607334d925f47>  
<https://sketchfab.com/3d-models/pomona-teapot-nm-2006-98-95r-349b378145944ff48e6866c4a5ac6cd1>  
<https://sketchfab.com/3d-models/pomona-jug-nm2006-98-36r-d02e3738243b499aa781c485d18927e8>  
<https://sketchfab.com/3d-models/pomona-mustard-pot-nm2006-98-7r-7ac031910a7245d5bc92c8f442086c20>  
<https://sketchfab.com/3d-models/pomona-jug-nm2006-98-54r-e363fc0e820243019bec38b0f7043ebf>









Eight trail trays curated from the Wedgwood Collection at the V&A.





One of Josiah Wedgwood's trail trays curated from the Wedgwood Collection at the V&A.





Workers profile tools curated from Spode Museum Trust collection



