

ANALYSIS OF 'INTERNAL CLOCK' BY MONOLAKE

Ben Ramsay

www.benramsay.co.uk

Introduction

- Intention behind the analysis
- Impact of the analysis
- Why this piece?
- Intended use of this analysis

Analysis

- Opening gestures

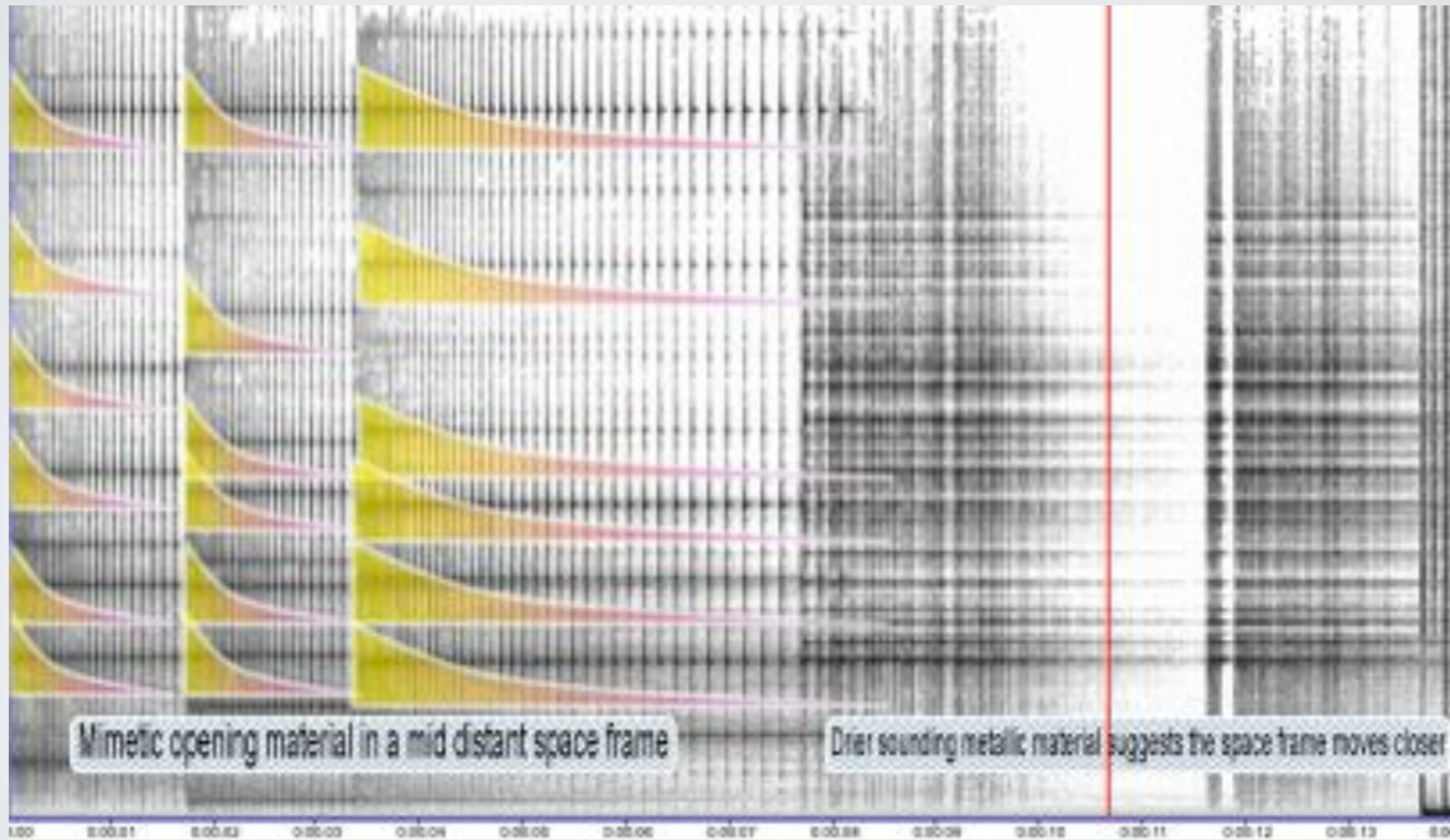


Figure 1. Opening section of 'Internal Clock' (00m00s - 00m14s)

Analysis

- Kick drum morphology

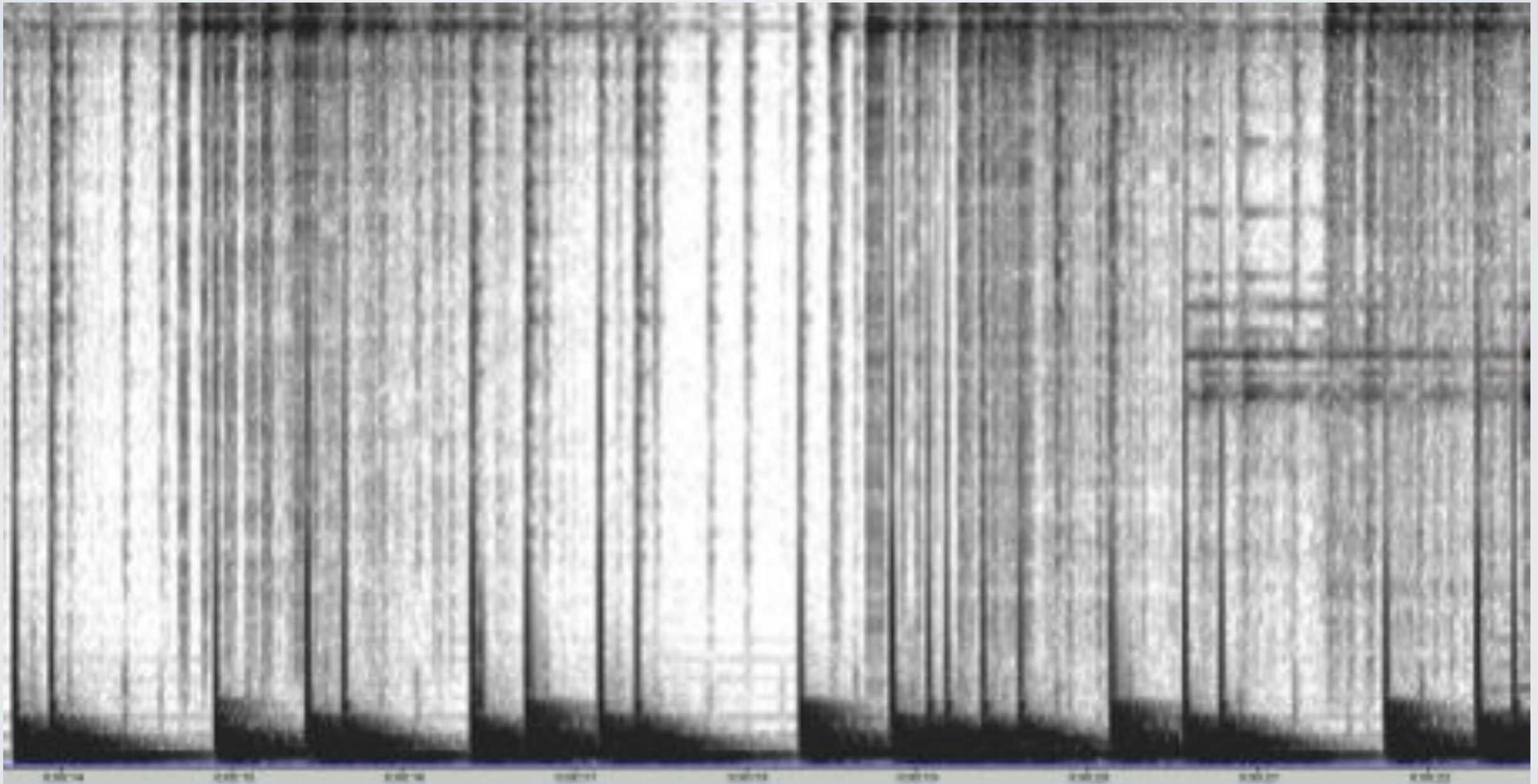


Figure 2. Spectrogram of Kick Drum pattern from (00m14s - 00m22s)

Analysis

- Causal linkage and growth processes

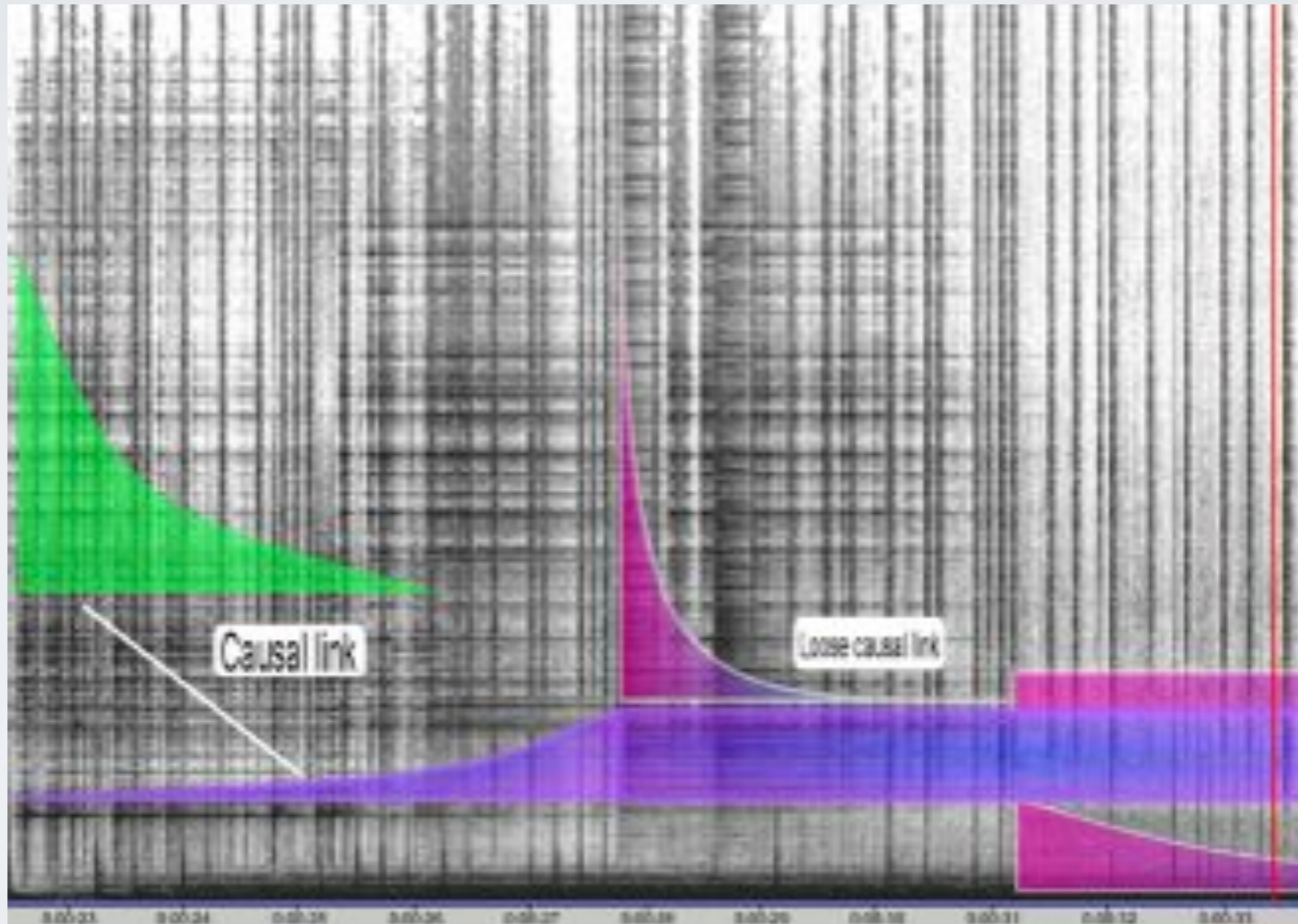


Figure 3. Visual representation of causality between gestures and textures (00m23s - 00m37s)

Analysis

- Energy-motion trajectory

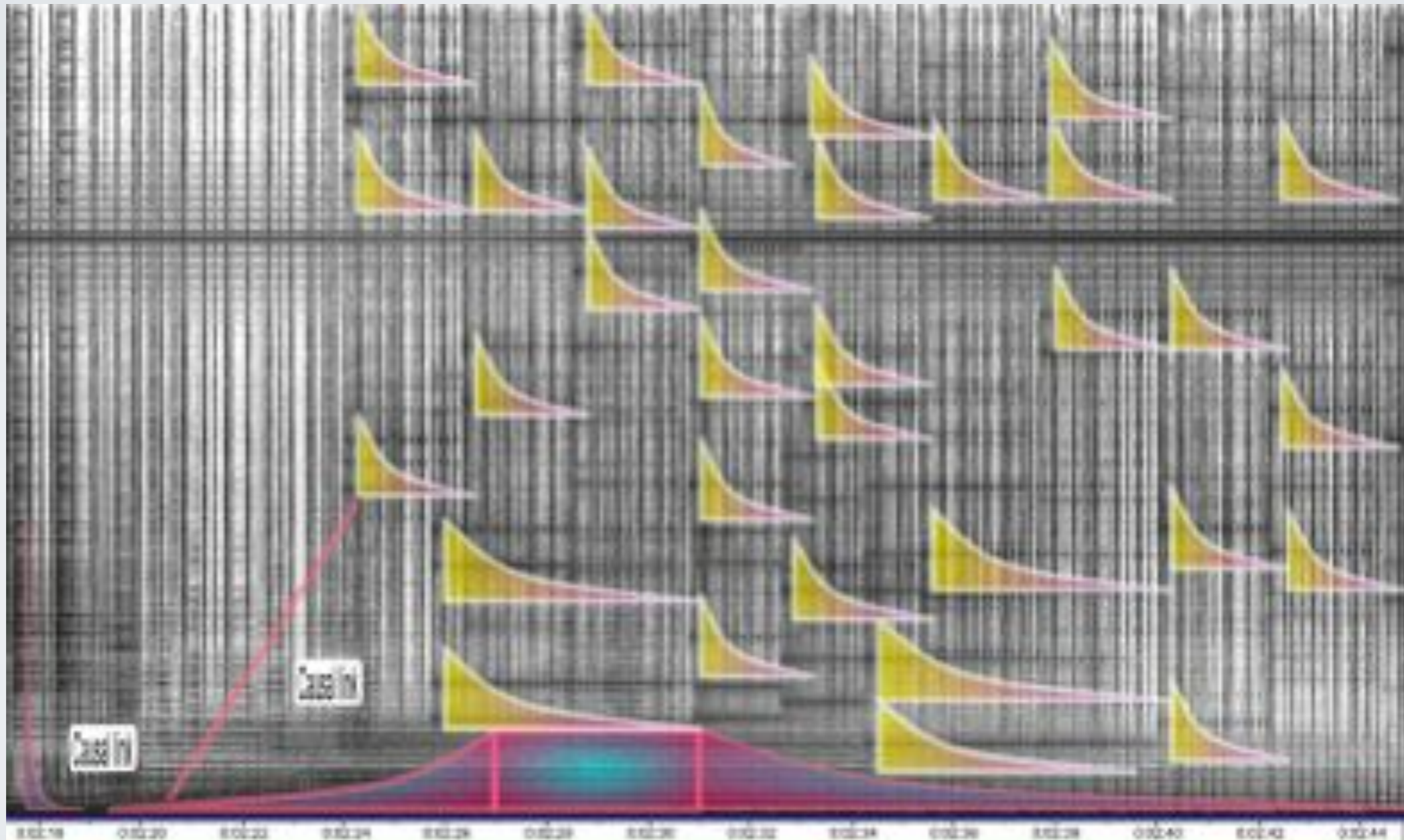


Figure 4. Energy-motion trajectory (02m17s - 02m45s)

Analysis

- Space frames

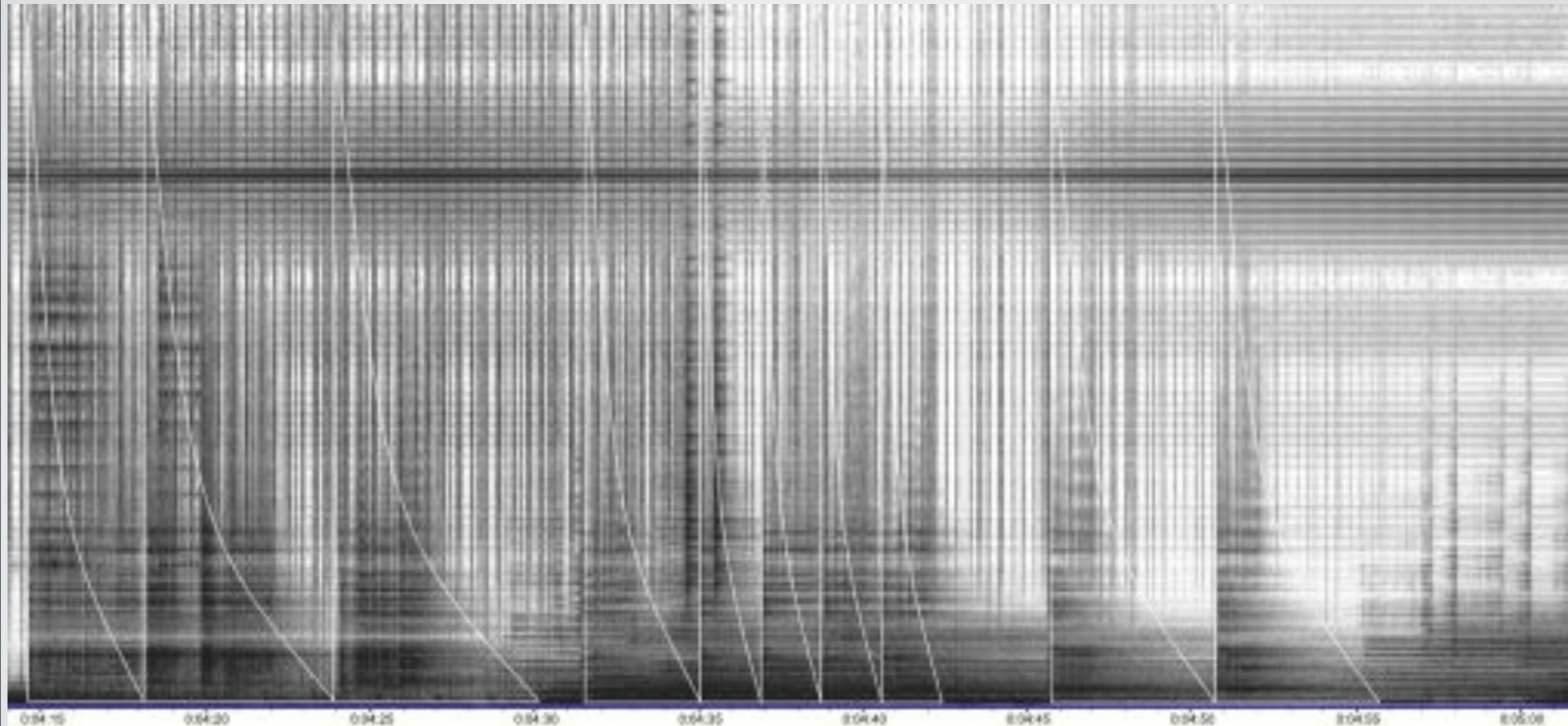


Figure 5. Visual representation of space frame shift (04m15s - 05m00s)

Comments

- Causal links

- The drum machine

Further work

- Additional analyses
- Exploring theories and their relationship to IDM
- Further explore what is currently missing
- Progress towards additional vocabulary

Bibliography

Elert, G. (2011). "The Physics Hypertextbook." Retrieved 1st November, 2011, from <http://physics.info/newton-third/>.

Emmerson, S. (1986). The Language Of Electroacoustic Music. London, Palgrave Macmillan.

Emmerson, S. (1999). "Aural landscape: musical space." Organised Sound 3(2): 135-140.

Landy, L. (2007). Understanding The Art Of Sound Organization. Chicago, MIT Press.

Smalley, D. (1997). "Spectromorphology: explaining sound-shapes." Organised Sound 2(2): 107-126.

Questions

www.benramsay.co.uk