



University of
Staffordshire

Anna Francis
Professor of Art and Society
Co-Director of The Portland Inn Project



CHINA

1770

Photo, Spode Rose Garden Banners by Louise Adams: Jenny Harper



Repopulating the Bandstand, Hanley Park 2010
Photo: Glen Stoker



How To Make a Brownfield Ikebana Works Instruction:

Please read to ensure you understand your responsibilities when using the Artist's Kit:

SHEET NUMBER: 1

What you need to know:

1. SCOPE & PURPOSE

1.1 This works instruction (WI) covers the selection of site and flowers, and the use of equipment when making a Brownfield Ikebana.

1.2 The purpose of this WI is to ensure that the processes described are carried out as efficiently and effectively as possible, while bearing in mind certain health and safety guidance measures. Anna Francis takes no responsibility for any erroneous use.

2. SELECTION AND ASSEMBLY:



2.1 Assemble your equipment for creating a Brownfield Ikebana. You will need; secateurs, a selection of kenzan, gloves to protect against thorns and a tray containing wet newspaper.



2.2 Select your site carefully; a site which has been between demolition and development for over 12 months is best, as this allows for maximum errant growth.



2.3 Walk the site thoroughly to get a good idea of the diversity of plants which have appeared.



2.4 Seek out the vessels which will make beautiful or surprising combinations for your ikebana.



2.5 You may wish to partner your vessel with a support salvaged from the site; this could be fabric or other chunkier materials.



2.6 Select your flowers carefully, considering what will work in the space that they are intended for, but also considering Shin, Soe and Hikae see 2.9.



2.7 As soon as you have cut your plants, wrap them in the wet newspaper to ensure they remain fresh.



2.8 Take your vessel, and select a kenzan which will be heavy enough to support your plants, while also fitting into the vase well.



2.9 This Ikebana variation comprises Shin (Heaven) Soe (Man) and Hikae (Earth). Shin = width + height of vessel + 100%. Soe should be 75% of Shin, and Hikae should be 50%.



2.10 Imagine a line coming from 12 o'clock from the kenzan : Shin should be placed into the Kenzan at between 0 and 5 degrees from that line, Soe at between 15 and 45 degrees and hikae at between 50 and 75.



2.11 The arrangement can be assembled outside the vessel and then added, or alternatively built into the vessel. Remember that when building, you are the sun, and therefore the flowers should grow towards you.



2.12 Any additions to the main lines are called Jushi or supplementaries, and should not outflank the stem they support. Set the Brownfield Ikebana on the support.





Brownfield Ikebana created by workshop participants, 2012.
Photos: Glen Stoker



Photo: Glen Stoker





Traditional methods to hand make bricks on the street at The Portland Inn Project.
Photos: Glen Stoker

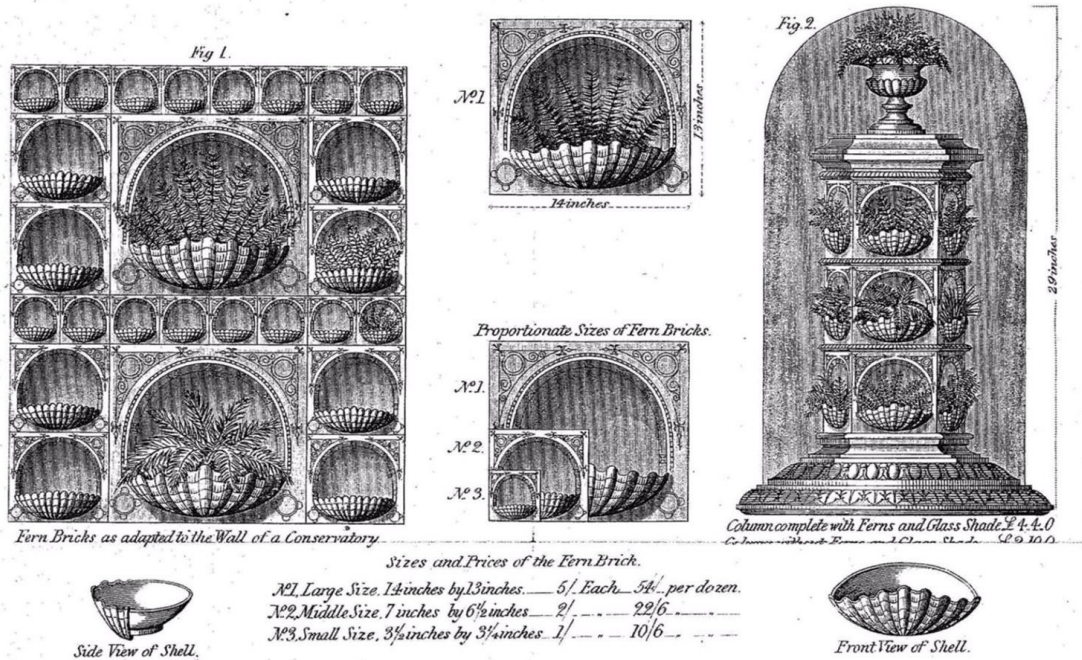


Figure 2. Illustrations of the sizes and uses of Watsonian Patent Fern Bricks from F. & G. Rosher's contemporary trade advertisement. Photo courtesy: Winterthur Library, Winterthur Museum and Country Estate, Winterthur, Delaware



As an example of one of bigger interventions: Fern Bricks for Shady Victorian Terraced Back Yards
 Watsonian Fern Bricks were manufactured for a little over a year by Garretts of Burslem (just up the road) patented 1859



The Fern Brick Bench

The Portland Inn Project 'One Hundred Year Plan' photoshoot with photographer Felicity Crawshaw.

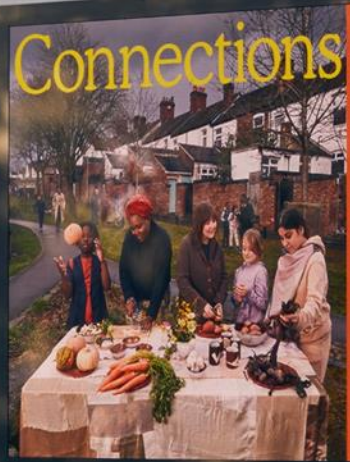
How do we get there?
I'll show you how we get there.

theonehundredyearplan.com

The Future



Connections



You shared your recipes with us,
and together we made a spell.

theonehundredyearplan.com

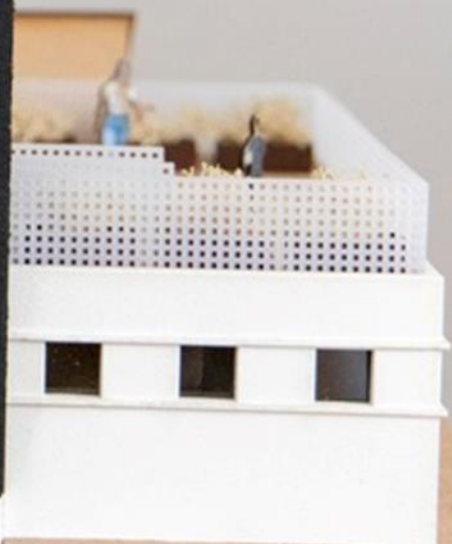
Alight Media

SUBWAY

The Floor Store

Mercury Sports Equ

RESURFACING
READY TO GO
+ FINISHES
LAMINATE



THE PORTLAND INN PROJECT, INC.
1000 Commercial Street, Portland, ME 04101
www.portlandinnproject.com



The Future



How do we get there?
I'll show you how we get there.

PORTLAND STALE

WBS

Holes

BELFORD BROS
SKIP HIRE
01702 544060